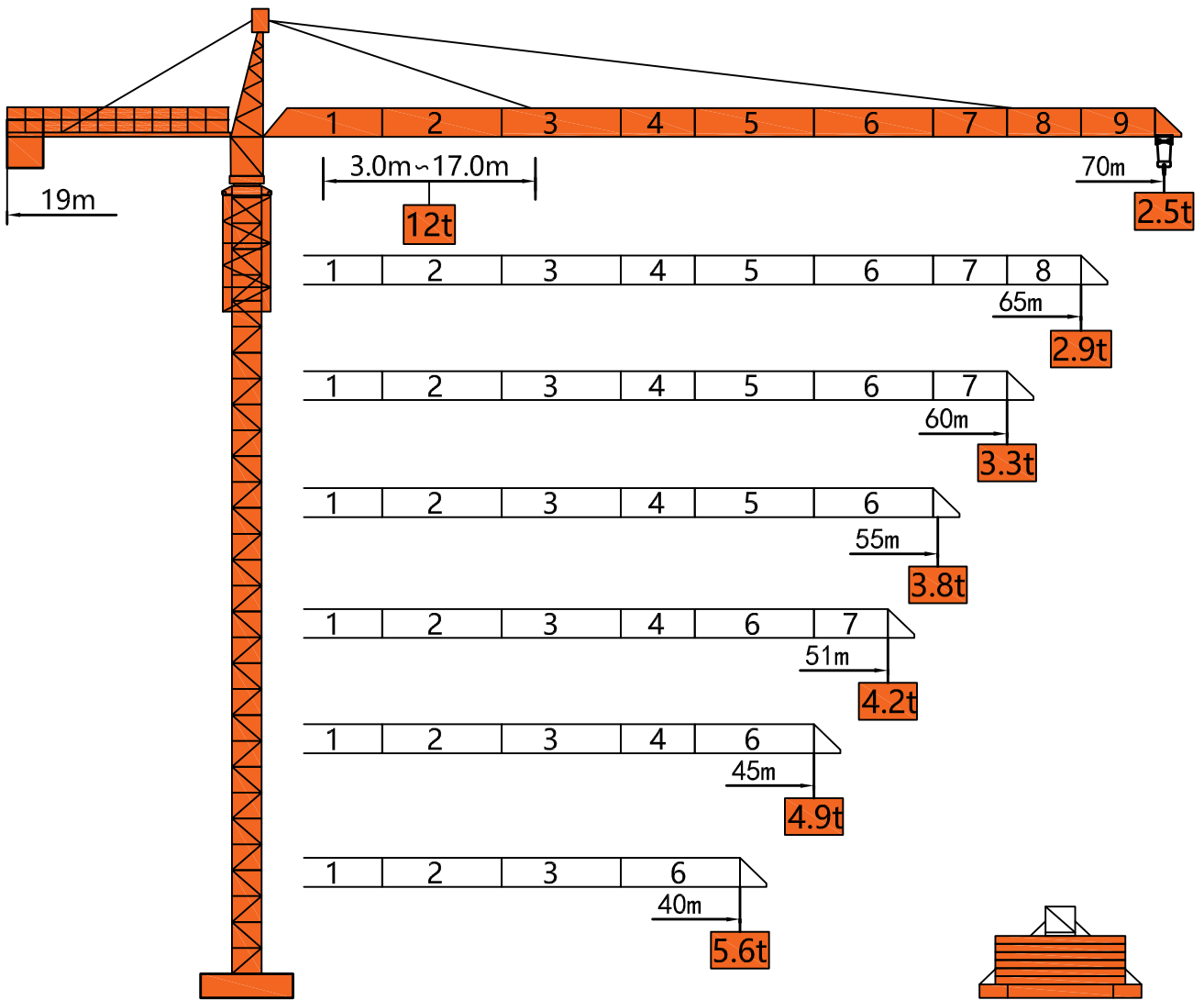




TC7025-12

TOWER CRANE SPECIFICATION

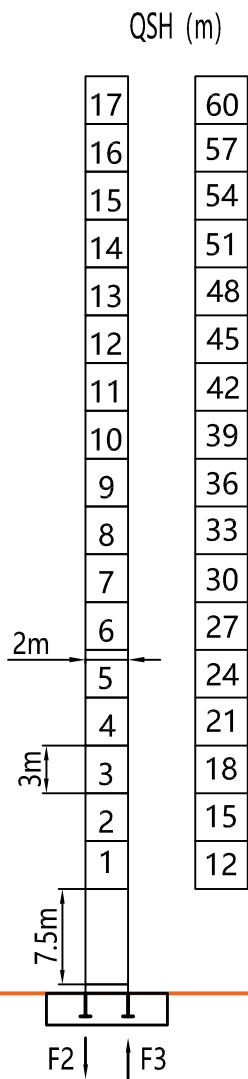
外形尺寸 Dimensions



Stationary
固定基础

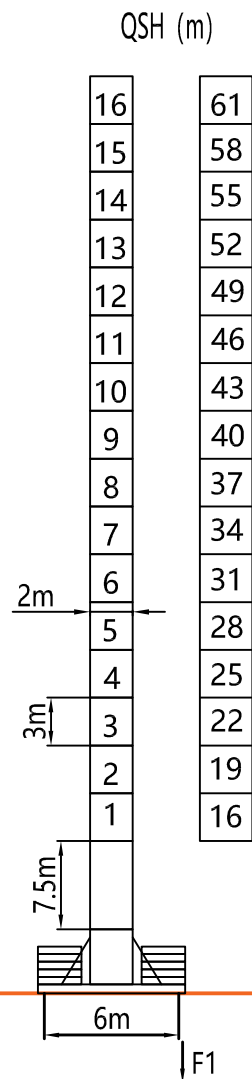
Under frame loading
压重基础

塔身 Tower



Stationary
固定基础

F2	● 125t	■ 197t
F3	● 76t	■ 165t
⊗	170t	



Under frame loading
压重基础

F1	● 86t	■ 121t
⊗	108t	

QSH: Height of The Hook ● In Service (工作状态) ■ Out of Service (非工作状态)

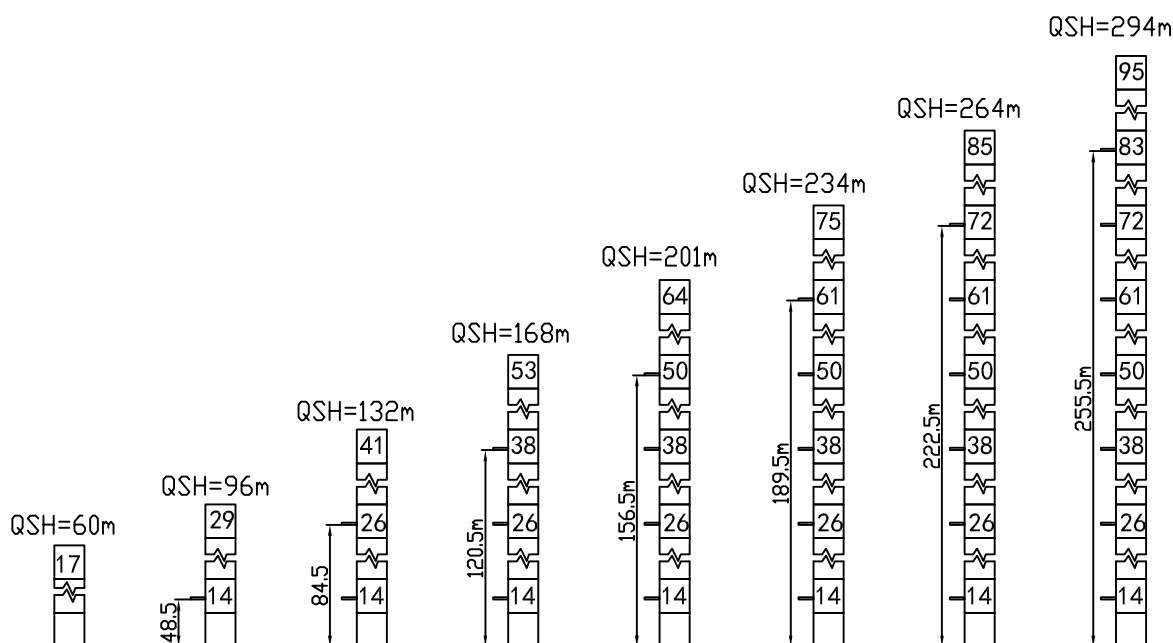
⊗ Weight with max free-standing height and max jib (without counter-weight and load) (不含载荷及平衡重, 最大臂长及标准高度时的自重)

载荷特性 Load Diagrams

Jib		Max Load		Mxt													
m	rope	t	m	20	22	25	28	32	35	40	45	50	55	60	65	70	
70	☞	6.0	33.5	6.0						5.72	4.91	4.29	3.79	3.38	3.03	2.75	2.50
	☜	12.0	17.4	10.35	9.33	8.08	7.13	6.12	5.52	4.71	4.09	3.59	3.18	2.83	2.55	2.30	
65	☞	6.0	35.4	6.0						5.22	4.56	4.02	3.58	3.21	2.90		
	☜	12.0	18.5	11.07	9.97	8.65	7.62	6.53	5.89	5.02	4.36	3.82	3.38	3.01	2.70		
60	☞	6.0	36.2	6.0						5.36	4.67	4.12	3.67	3.30			
	☜	12.0	18.9	12.34	10.20	8.87	7.80	6.70	6.04	5.16	4.47	3.92	3.47	3.10			
55	☞	6.0	37.2	6.0						5.53	4.82	4.26	3.80				
	☜	12.0	19.5	11.7	10.5	9.14	8.05	6.92	6.24	5.33	4.62	4.06	3.60				
51	☞	6.0	37.5	6.0						5.58	4.87	4.20					
	☜	12.0	19.7	11.8	10.6	9.22	8.12	6.98	6.29	5.38	4.67	3.98					
45	☞	6.0	37.5	6.0						5.58	4.90						
	☜	12.0	19.7	11.8	10.6	9.22	8.12	6.98	6.29	5.38	4.70						
40	☞	6.0	37.5	6.0						5.60							
	☜	12.0	19.7	11.8	10.6	9.22	8.12	6.98	6.29	5.40							

附着示意图 Anchorage

L68A1/L68B2



机构特性 Mechanisms

Mechanisms	Example	Model	Speed (m/min)	Hoist Weight (t)	Rope Capacity	Power	
Hoisting		55JTVF30		0-100	2.0	600m	55kw
				0-50	6.0		
				0-50	4.0		
				0-25	12.0		
Trolleying		BE2455X	0 ~ 58m/min			7.5kw	
Slewing		HR37	0 ~ 0.82r/min			2*5.5kw	
Main Supply					~ 380V(±10%) 50Hz		
Gross Power (Excluding climbing and travelling)					73.5Kw		

平衡重 Counter-Weight

Jib Length 臂长	Balance Arm Length 平衡臂长	Coounter-Weight 平衡重
70m	19m	21.5t
65m	19m	19.5t
60m	19m	17.5t
55m	19m	15.5t
50m	19m	14.0t
45m	19m	12.5t