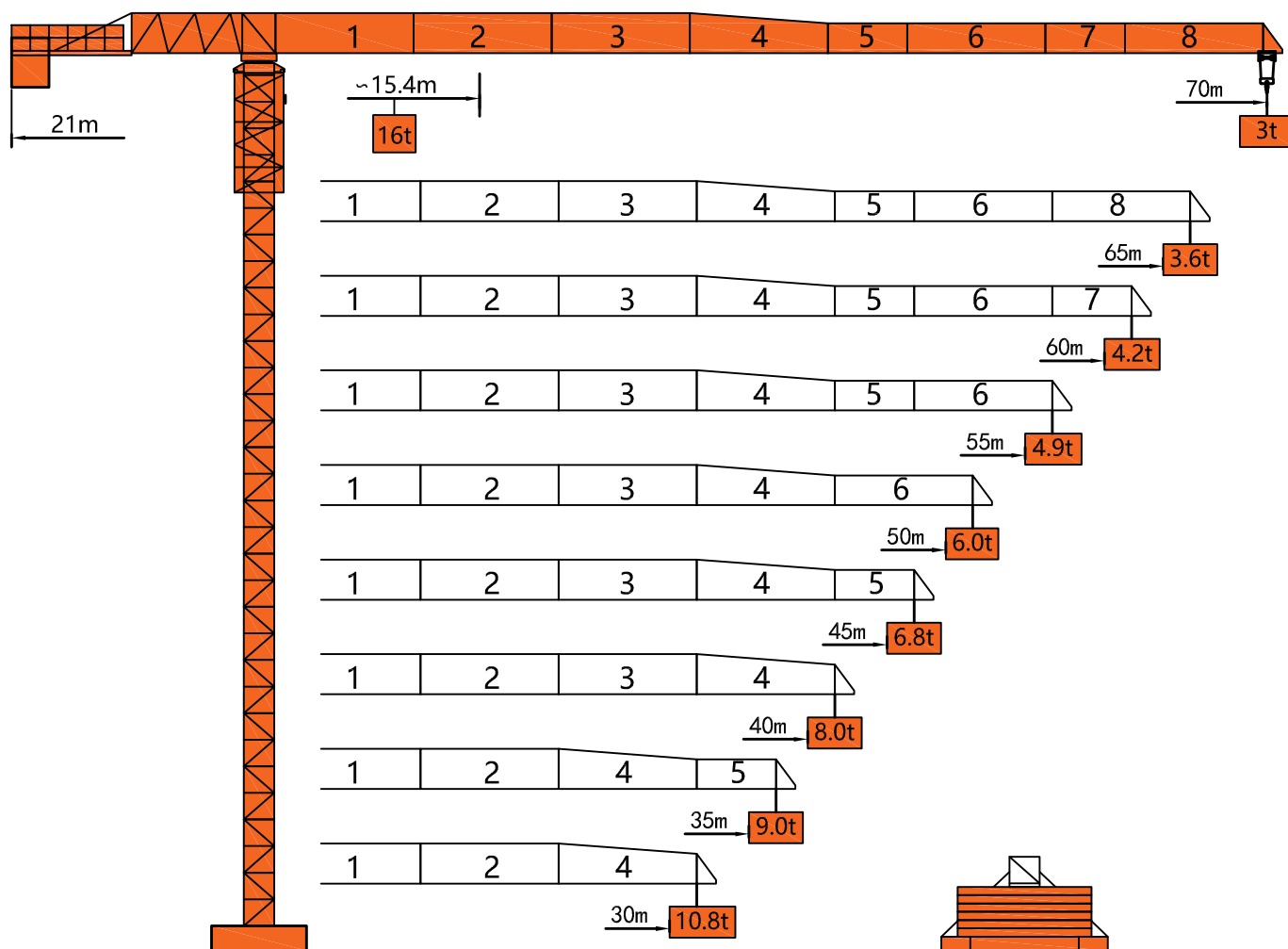


#### 外形尺寸 Dimensions



Stationary  
固定基础

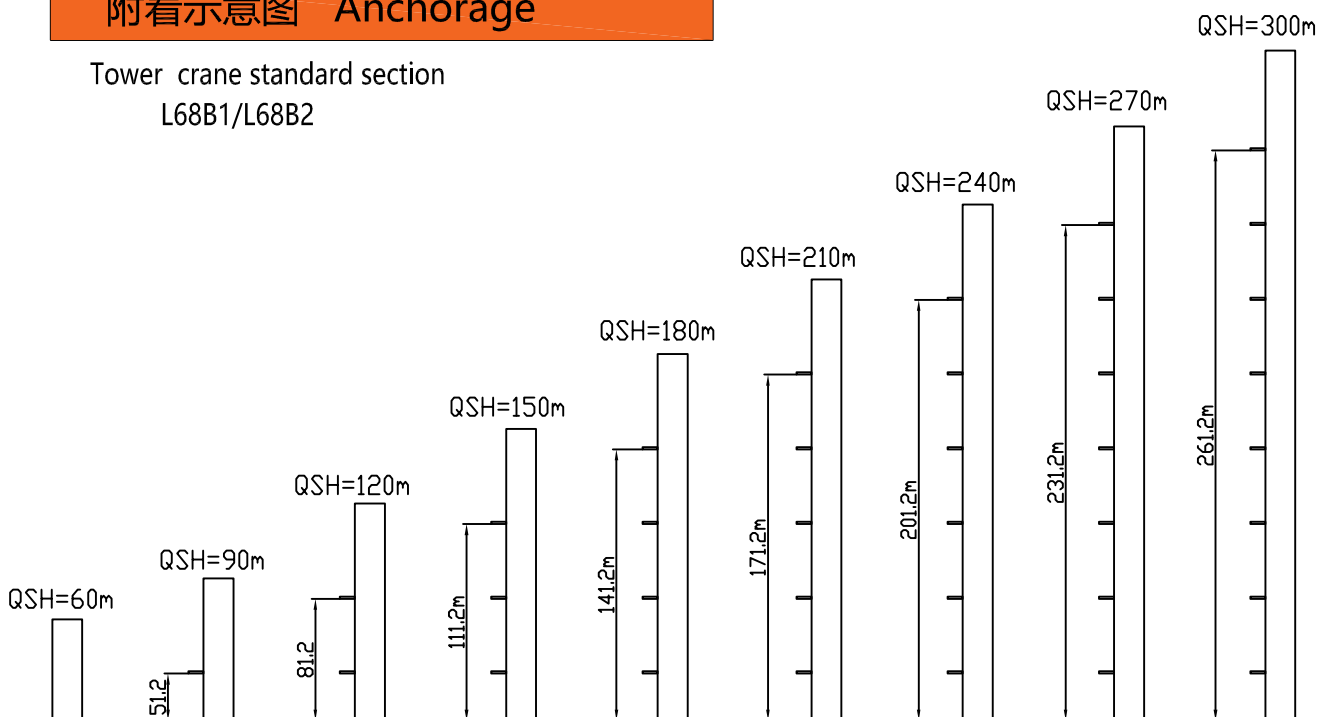
Under frame loading  
压重基础

载荷特性 Load Diagrams

Jib		Max Load		Mxt												
m	rope	t	m	18	20	22	25	30	35	40	45	50	55	60	65	70
70	☞	8	30.2	8					6.8	5.9	5.1	4.5	4.0	3.6	3.3	3.0
	☞☞	16	15.4	13.5	12.0	10.8	9.3	7.6	6.1	5.2	4.4	3.8	3.3	2.9	2.6	2.3
65	☞	8	32.5	8					7.4	6.4	5.6	4.9	4.4	4.0	3.6	
	☞☞	16	16.5	14.6	13.0	11.7	10.1	8.2	6.7	5.7	4.9	4.2	3.7	3.3	2.9	
60	☞	8	34.1	8					7.8	6.7	5.9	5.2	4.7	4.2		
	☞☞	16	17.4	15.4	13.7	12.3	10.7	8.7	7.1	6.0	5.2	4.5	4.0	3.5		
55	☞	8	35.6	8					7.0	6.2	5.5	4.9				
	☞☞	16	18.1	16.0	14.4	13.0	11.2	9.2	7.7	6.3	5.5	4.8	4.2			
50	☞	8	38.6	8					7.7	6.8	6.0					
	☞☞	16	19.7	16.0	15.7	14.2	12.3	10.0	8.4	7.0	6.1	5.3				
45	☞	8	38.9	8					7.8	6.8						
	☞☞	16	19.8	16.0	15.8	14.3	12.4	10.1	8.5	7.1	6.1					
40	☞	8	40.0	8												
	☞☞	16	20.6	16.0	16.0	14.9	12.9	10.6	8.9	7.6						
35	☞	8	35.0	8												
	☞☞	16	21.0	16.0	16.0	15.2	13.3	10.8	9.0							
30	☞	8	30.0	8												
	☞☞	16	21.0	16.0	16.0	15.2	13.3	10.8								

附着示意图 Anchorage

Tower crane standard section  
L68B1/L68B2



(由于产品不断改进, 产品配置及技术性能参数如有更改, 以实物为准。With the products continually improved and their design optimized some performance data will be modified without notice.)

## 机构特性 Mechanisms

Mechanisms	Example	Model	Speed (m/min)		Hoist Weight (t)	Rope Capacity	Power
Hoisting		55JTVF30		0-90	2	700m	55kw
				0-36	8		
				0-45	4		
				0-18	16		
Trolleying		BP75A	0 ~ 80m/min			7.5kw	
Slewing		HR37	0 ~ 0.7r/min			2*7.5kw	
Main Supply					~ 380V(±10%) 50Hz		
Gross Power (Excluding climbing and travelling)					77.5Kw		

## 平衡重 Counter-Weight

Jib Length 臂长	Balance Arm Length 平衡臂长	Coynter-Weight 平衡重
70m	21m	20.6t
65m	21m	20.6t
60m	21m	19.5t
55m	21m	18.6t
50m	21m	16.7t
45m	17m	22.5t
40m	17m	20.6t
35m	17m	17.6t
30m	17m	15.6t