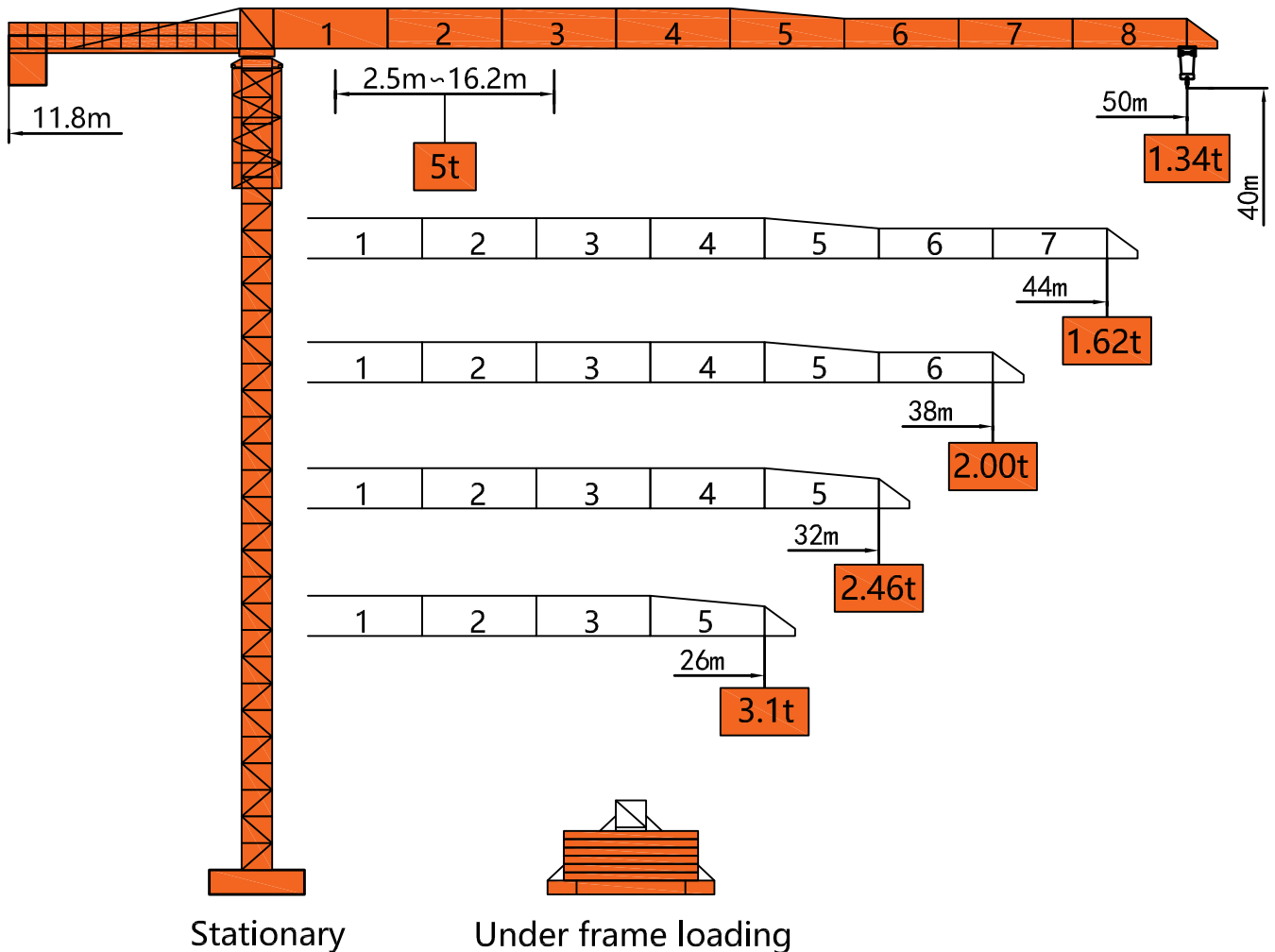
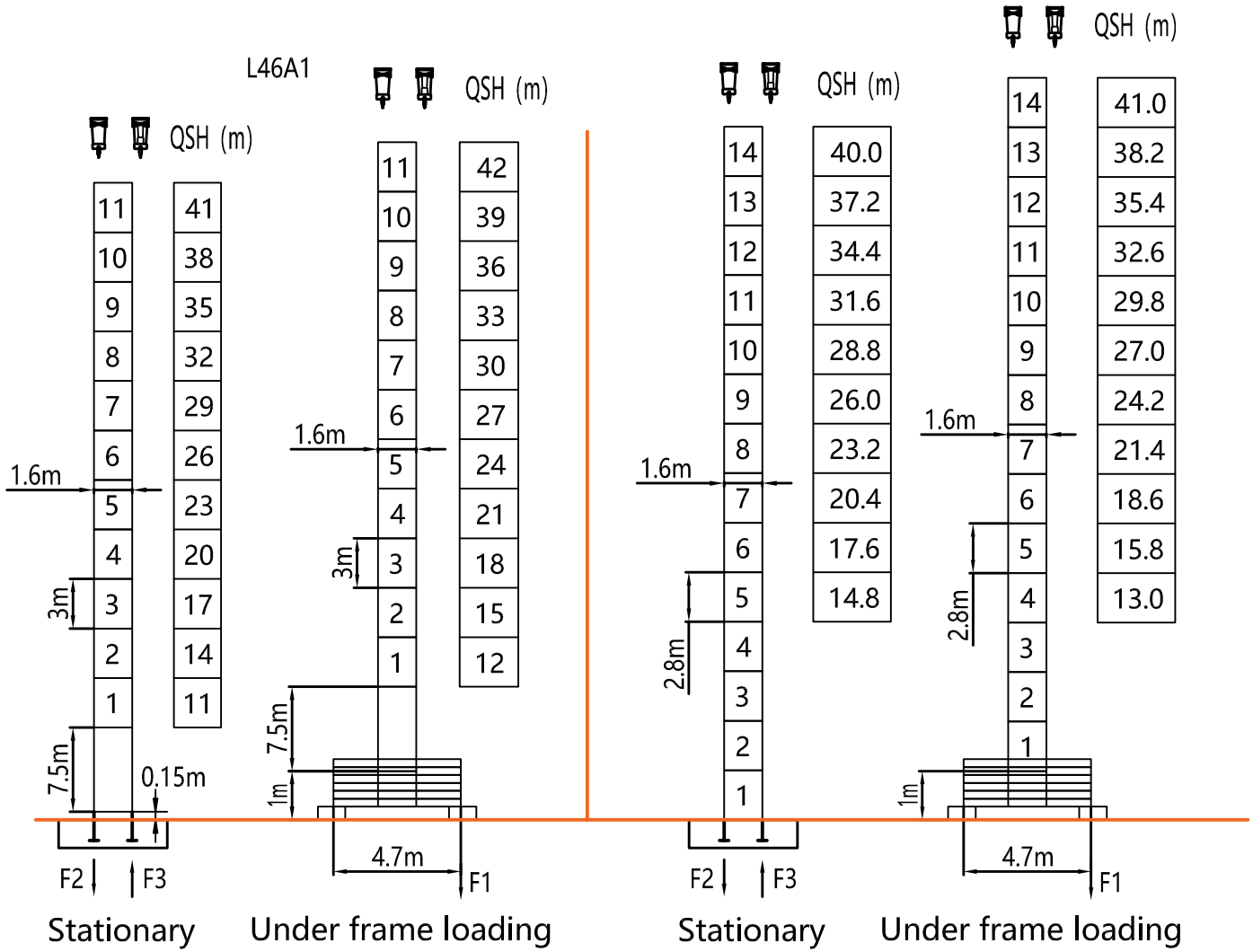


Dimensions



Tower



F2	● 68t	■ 72t
F3	● 50t	■ 54t
⊗	32t	

F1	● 52t	■ 63t
⊗	37t	

F2	● 65t	■ 69t
F3	● 47t	■ 51t
⊗	29t	

F1	● 50t	■ 61t
⊗	34t	

QSH: Height of The Hook ● In Service ■ Out of Service

⊗ Weight with max free-standing height and max jib (without counter-weight and load)

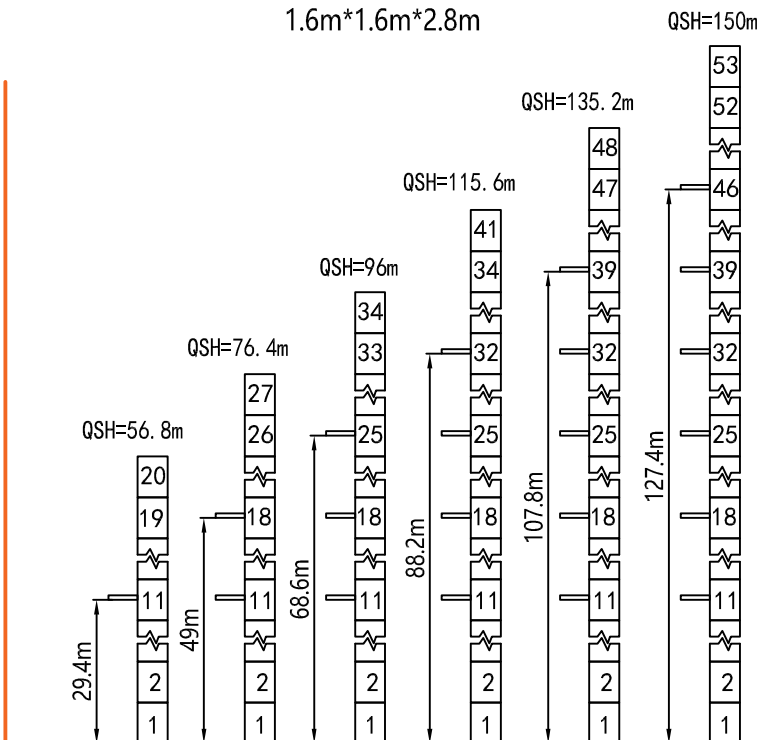
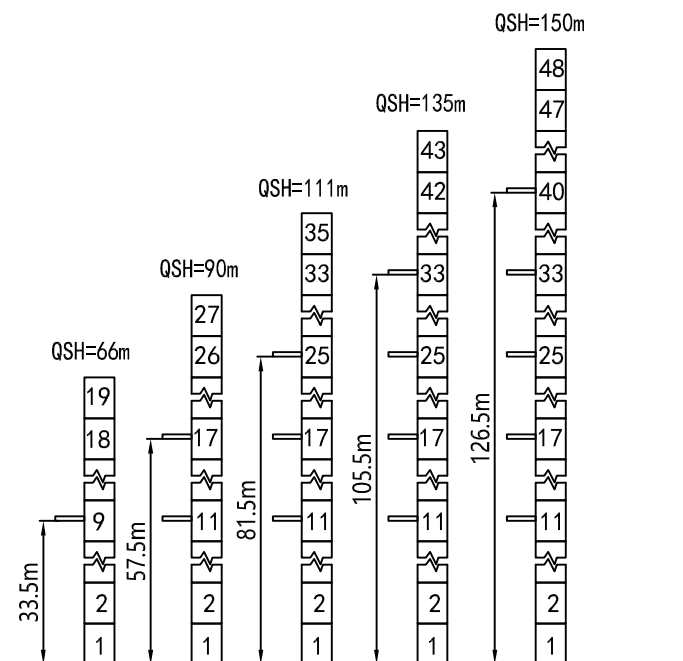
Load Diagrams

Jib		Max Load		Mxt													
m	rope	t	m	18	19	20	21	22	23	24	25	26	32	38	44	50	
50	☞	2.5	29.5	2.50										2.34	1.90	1.58	1.34
	☞☞	5.0	16.2	4.45	4.20	3.96	3.75	3.56	3.38	3.22	3.07	2.94	2.30	1.86	1.54	1.30	
44	☞	2.5	30.2	2.50										2.40	1.95	1.62	
	☞☞	5.0	16.6	4.57	4.30	4.06	3.85	3.65	3.47	3.30	3.15	3.01	2.36	1.91	1.58		
38	☞	2.5	30.9	2.50										2.46	2.00		
	☞☞	5.0	16.9	4.68	4.40	4.16	3.94	3.74	3.56	3.39	3.23	3.10	2.42	1.96			
32	☞	2.5	30.9	2.50													
	☞☞		16.9	4.68	4.40	4.16	3.94	3.74	3.56	3.39	3.23	3.10	2.42				
26	☞	2.5	30.9	2.50													
	☞☞	5.0	16.9	4.68	4.40	4.16	3.94	3.74	3.56	3.39	3.23	3.10					

Anchorage

Tower crane standard section L46A1

Tower crane standard section 1.6m*1.6m*2.8m



Mechanisms

Mechanisms	Example	Model	Speed (m/min)		Hoist Weight (t)	Rope Capacity	Power
Hoisting		IQ5.70B	↑	0-9	2.5	320m	18kw
				0-35	2.5		
				0-70	1.25		
			↓	0-4.5	5.0		
				0-17.5	5.0		
				0-35	2.5		
Trolleying		BE2455X	0 ~ 40m/min			2.4kw	
Slewing		HR37	0 ~ 0.63r/min			2*3.7kw	
Main Supply					~ 380V(±10%) 50Hz		
Gross Power (Excluding climbing and travelling)					27.8Kw		

Counter-Weight

Jib Length	Balance Arm Length	Counter-Weight
50m	11.8m	8.88t
44m	11.8m	7.76t
38m	11.8m	6.64t
32m	11.8m	5.52t
26m	11.8m	4.40t