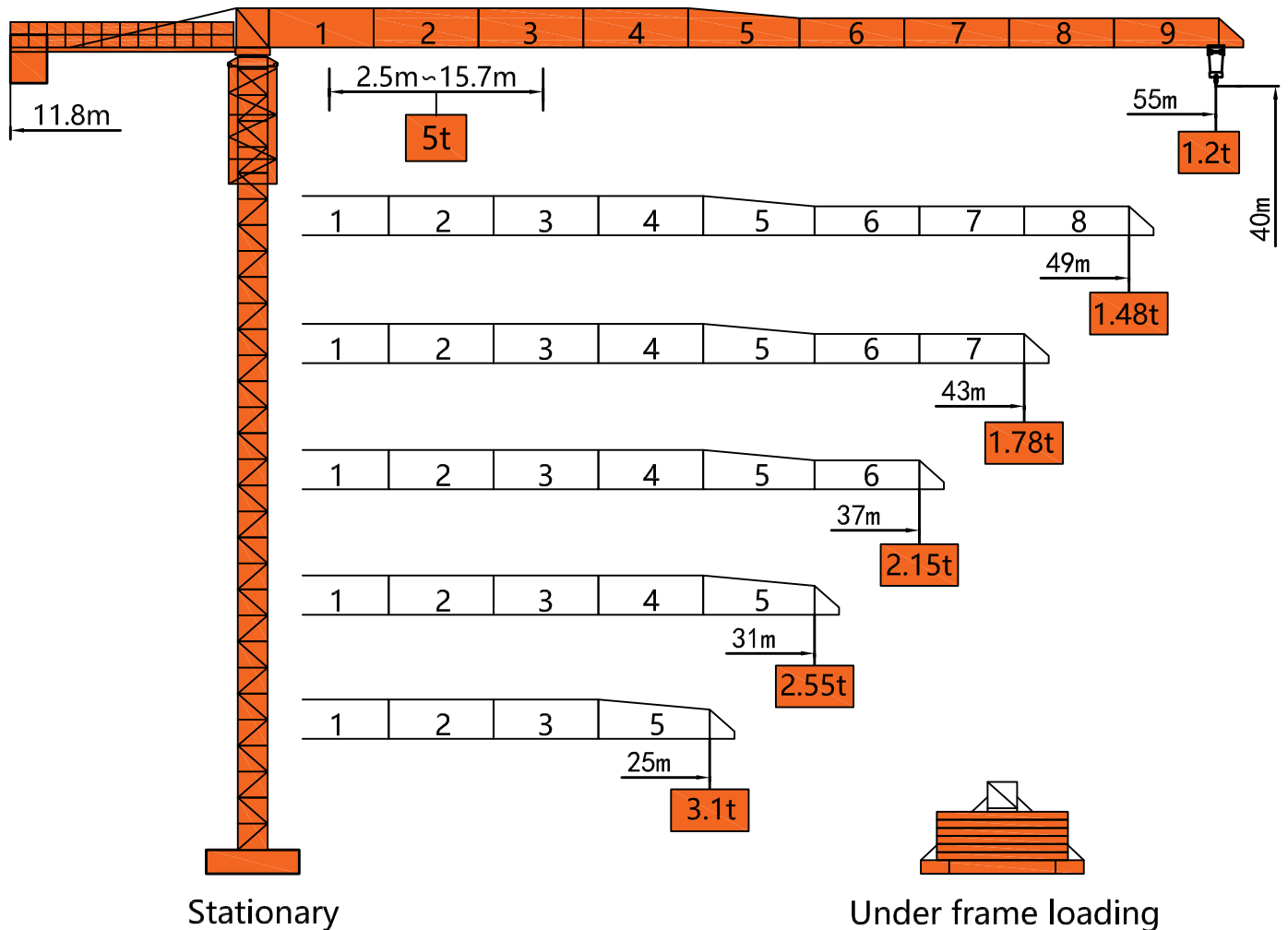
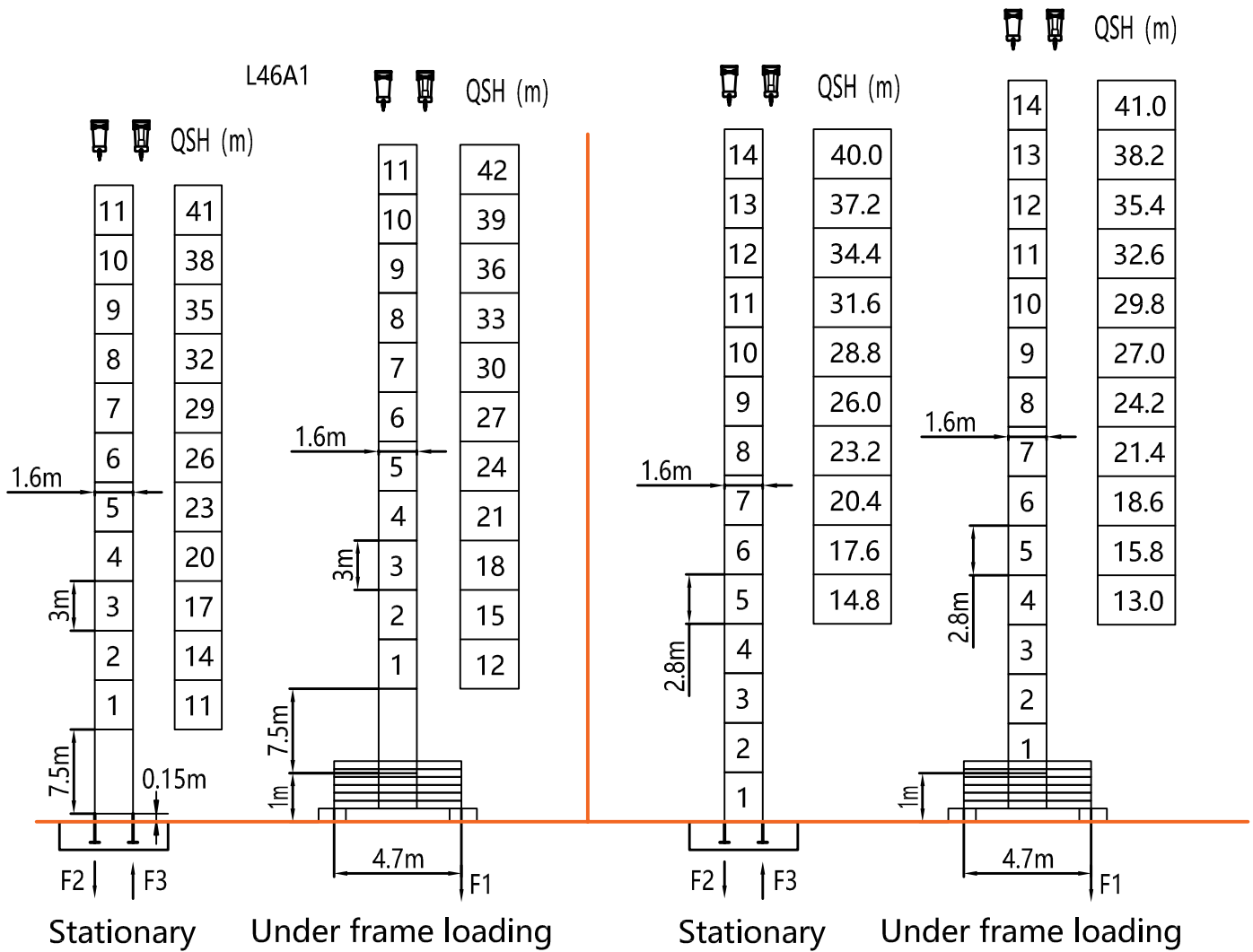


Dimensions



Tower



F2	● 72t	■ 74t
F3	● 53t	■ 55t
⊗	33t	

F1	● 53t	■ 64t
⊗	37t	

F2	● 68t	■ 72t
F3	● 50t	■ 53t
⊗	30t	

F1	● 52t	■ 63t
⊗	34t	

QSH: Height of The Hook ● In Service ■ Out of Service

⊗ Weight with max free-standing height and max jib (without counter-weight and load)

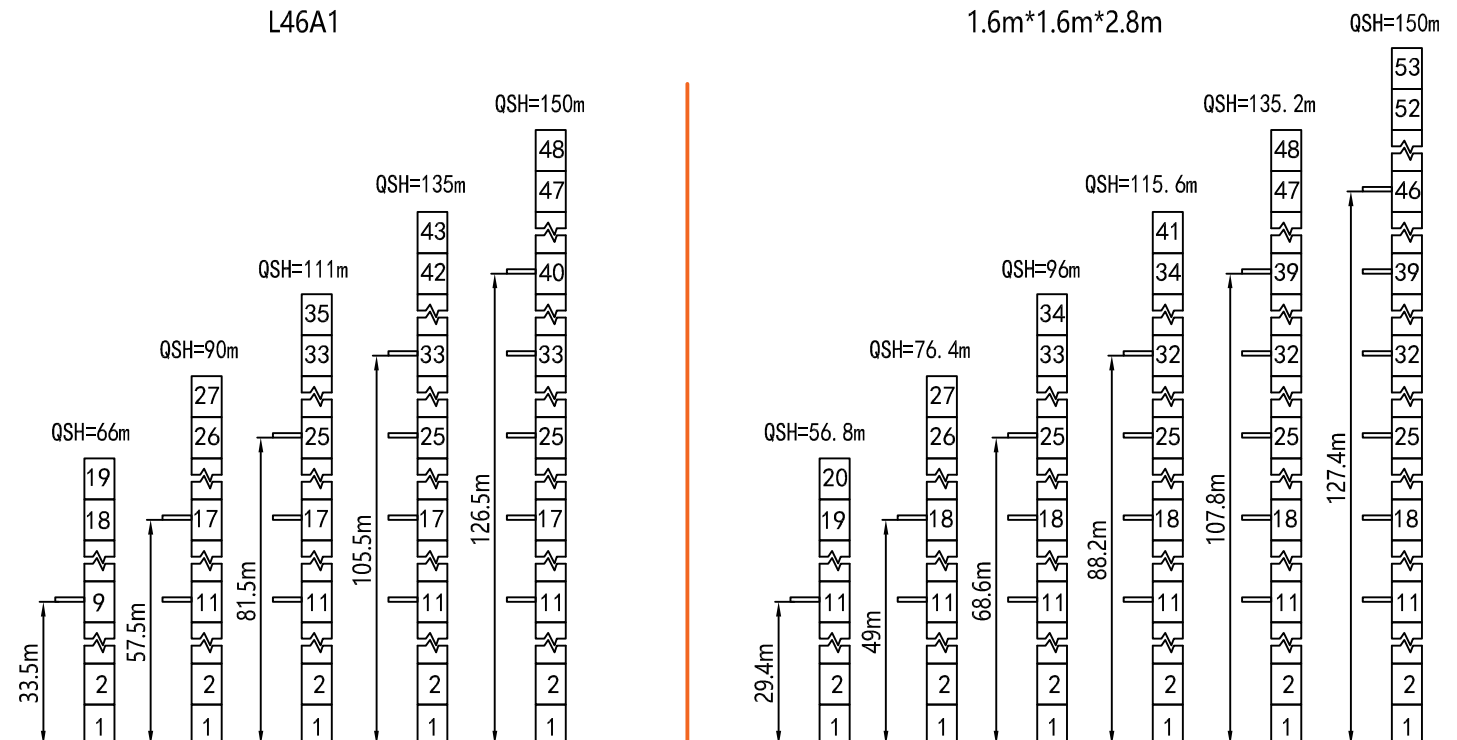
Load Diagrams

Jib		Max Load		Mxt													
m	rope	t	m	18	19	20	21	22	23	24	25	31	37	43	49	55	
55	☞	2.5	29.8	2.50									2.39	1.95	1.63	1.39	1.20
	☞☞	5.0	15.7	4.31	4.07	3.85	3.64	3.46	3.29	3.14	3.00	2.34	1.90	1.58	1.34	1.15	
49	☞	2.5	31.4	2.50									2.07	1.73	1.48		
	☞☞	5.0	16.5	4.56	4.30	4.07	3.86	3.66	3.49	3.33	3.18	2.41	2.02	1.68	1.43		
43	☞	2.5	32.1	2.50									2.12	1.78			
	☞☞	5.0	16.9	4.67	4.41	4.17	3.95	3.75	3.57	3.41	3.26	2.55	2.07	1.73			
37	☞	2.5	32.4	2.50									2.15				
	☞☞	5.0	17.1	4.73	4.46	4.22	4.00	3.80	3.62	3.45	3.30	2.58	2.10				
31	☞	2.5	32.1	2.50													
	☞☞	5.0	16.9	4.67	4.41	4.17	3.95	3.75	3.57	3.41	3.26	2.55					
25	☞	2.5	31.9	2.50													
	☞☞	5.0	16.2	4.46	4.20	3.97	3.76	3.58	3.40	3.25	3.10						

Anchorage

Tower crane standard section
L46A1

Tower crane standard section
1.6m*1.6m*2.8m



Mechanisms

Mechanisms	Example	Model	Speed (m/min)		Hoist Weight (t)	Rope Capacity	Power
Hoisting		IQ5.70B	↑	0-9	2.5	320m	18kw
				0-35	2.5		
				0-70	1.25		
			↓	0-4.5	5.0		
				0-17.5	5.0		
				0-35	2.5		
Trolleying		BE2455X	0 ~ 40m/min			3.3kw	
Slewing		HR37	0 ~ 0.63r/min			2*3.7kw	
Main Supply						~ 380V(±10%) 50Hz	
Gross Power (Excluding climbing and travelling)						28.7Kw	

Counter-Weight

Jib Length	Balance Arm Length	Counter-Weight
55m	11.8m	10.4t
49m	11.8m	9.2t
43m	11.8m	8.0t
37m	11.8m	6.8t
31m	11.8m	5.6t
25m	11.8m	5.6t