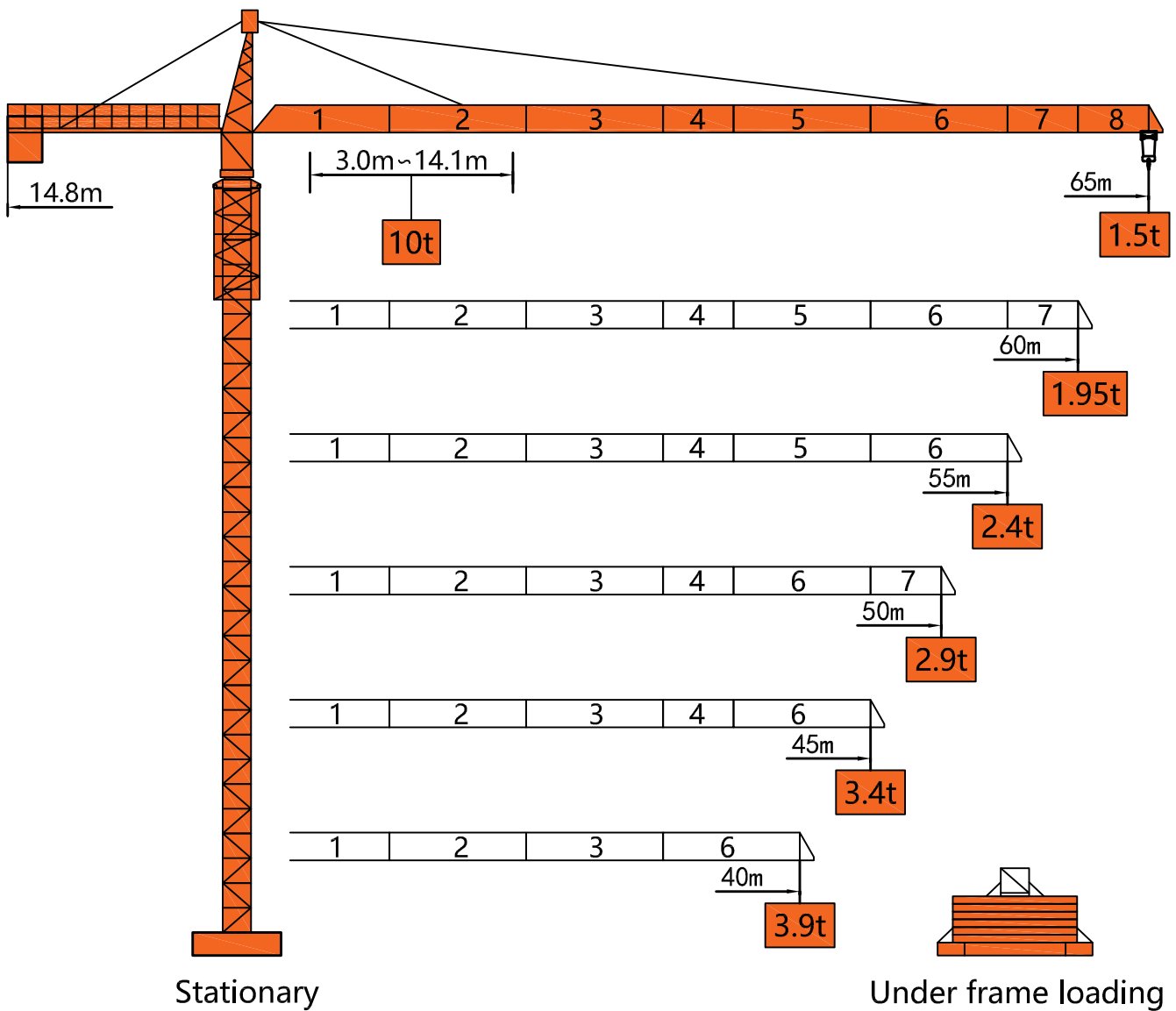




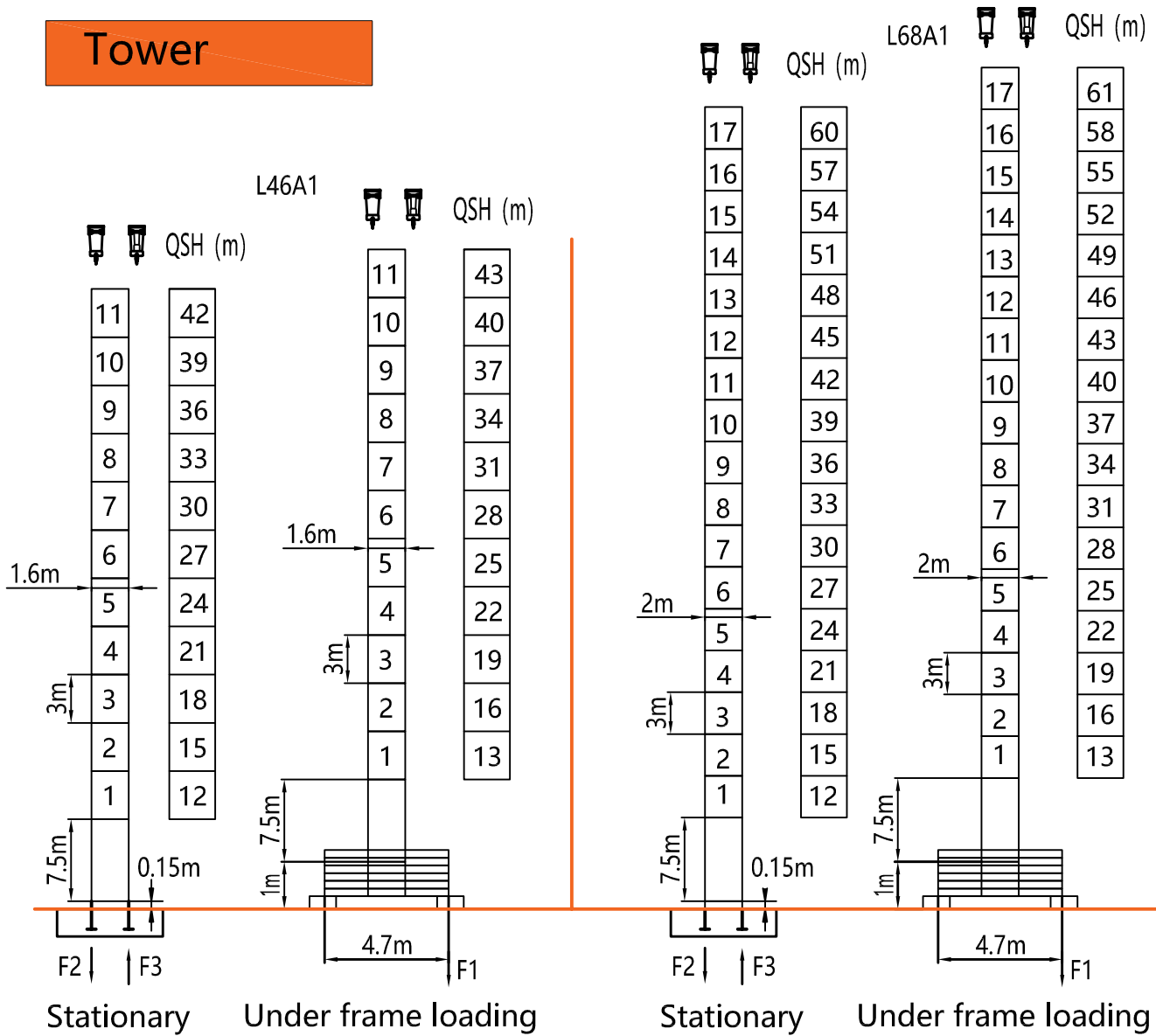
# TC6515-10

## TOWER CRANE SPECIFICATION

### Dimensions



Tower



F2	● 106t	■ 126t
F3	● 74t	■ 99t
⊗	49t	

F1	● 77t	■ 98t
⊗	53t	

F2	● 125t	■ 197t
F3	● 76t	■ 165t
⊗	58t	

F1	● 86t	■ 121t
⊗	63t	

QSH: Height of The Hook    ● In Service    ■ Out of Service

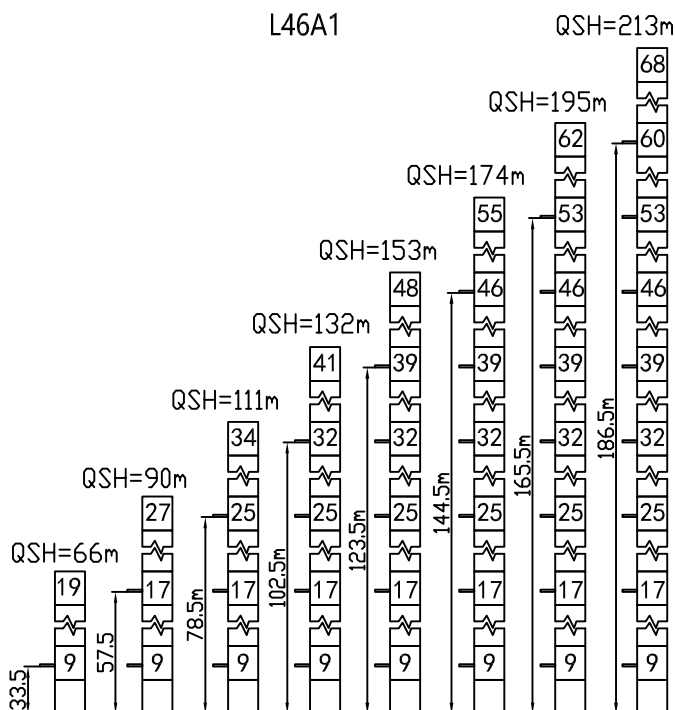
⊗ Weight with max free-standing height and max jib (without counter-weight and load)

## Load Diagrams

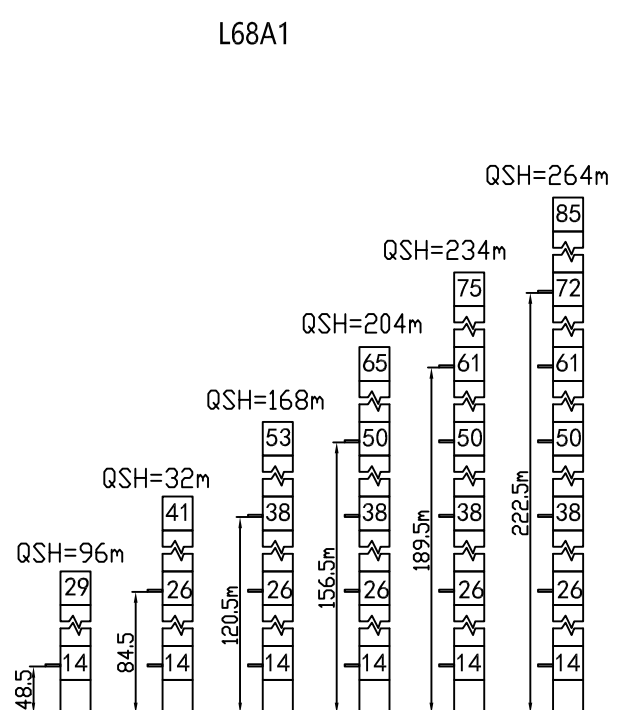
Jib		Max Load		Mxt												
m	rope	t	m	20	22	24	26	28	30	35	40	45	50	55	60	65
65	☞	5.0	26.4	5.0				4.67	4.30	3.58	3.03	2.60	2.26	1.98	1.75	1.55
	☜	10.0	14.1	6.78	6.08	5.50	5.01	4.59	4.22	3.50	2.95	2.52	2.18	1.90	1.67	1.47
60	☞	5.0	28.4	5.0				4.70	3.91	3.33	2.87	2.50	2.20	1.95		
	☜	10.0	15.1	7.37	6.62	6.00	5.47	5.02	4.62	3.83	3.25	2.79	2.42	2.12	1.87	
55	☞	5.0	30.3	5.0				4.23	3.60	3.11	2.72	2.40				
	☜	10.0	16.2	7.92	7.12	6.45	5.89	5.41	4.99	4.15	3.52	3.03	2.64	2.32		
50	☞	5.0	31.9	5.0				4.48	3.83	3.31	2.90					
	☜	10.0	17.0	8.37	7.53	6.83	6.23	5.73	5.29	4.40	3.75	3.23	2.82			
45	☞	5.0	32.6	5.0				4.60	3.93	3.40						
	☜	10.0	17.4	8.57	7.71	6.99	6.39	5.87	5.42	4.52	3.85	3.32				
40	☞	5.0	32.4	5.0				4.57	3.90							
	☜	10.0	17.3	8.52	7.66	6.95	6.35	5.83	5.39	4.49	3.82					

## Anchorage

Tower crane standard section



Tower crane standard section



## Mechanisms

Mechanisms	Example	Model	Speed (m/min)	Hoist Weight (t)	Rope Capacity	Power	
Hoisting		IQ8.80P		0-76	1.4	420m	37kw
				0-38	4.0		
				0-76	2.8		
				0-38	8.0		
Trolleying		BE2455X	0 ~ 58m/min			5.5kw	
Slewing		HR37	0 ~ 0.82r/min			2*5.5kw	
Main Supply					~ 380V(±10%) 50Hz		
Gross Power (Excluding climbing and travelling)					53.5Kw		

## Counter-Weight

Jib Length	Balance Arm Length	Counter-Weight
65m	14.8m	19.3t
60m	14.8m	17.6t
55m	14.8m	15.9t
50m	14.8m	14.2t
45m	14.8m	12.5t
40m	14.8m	10.8t