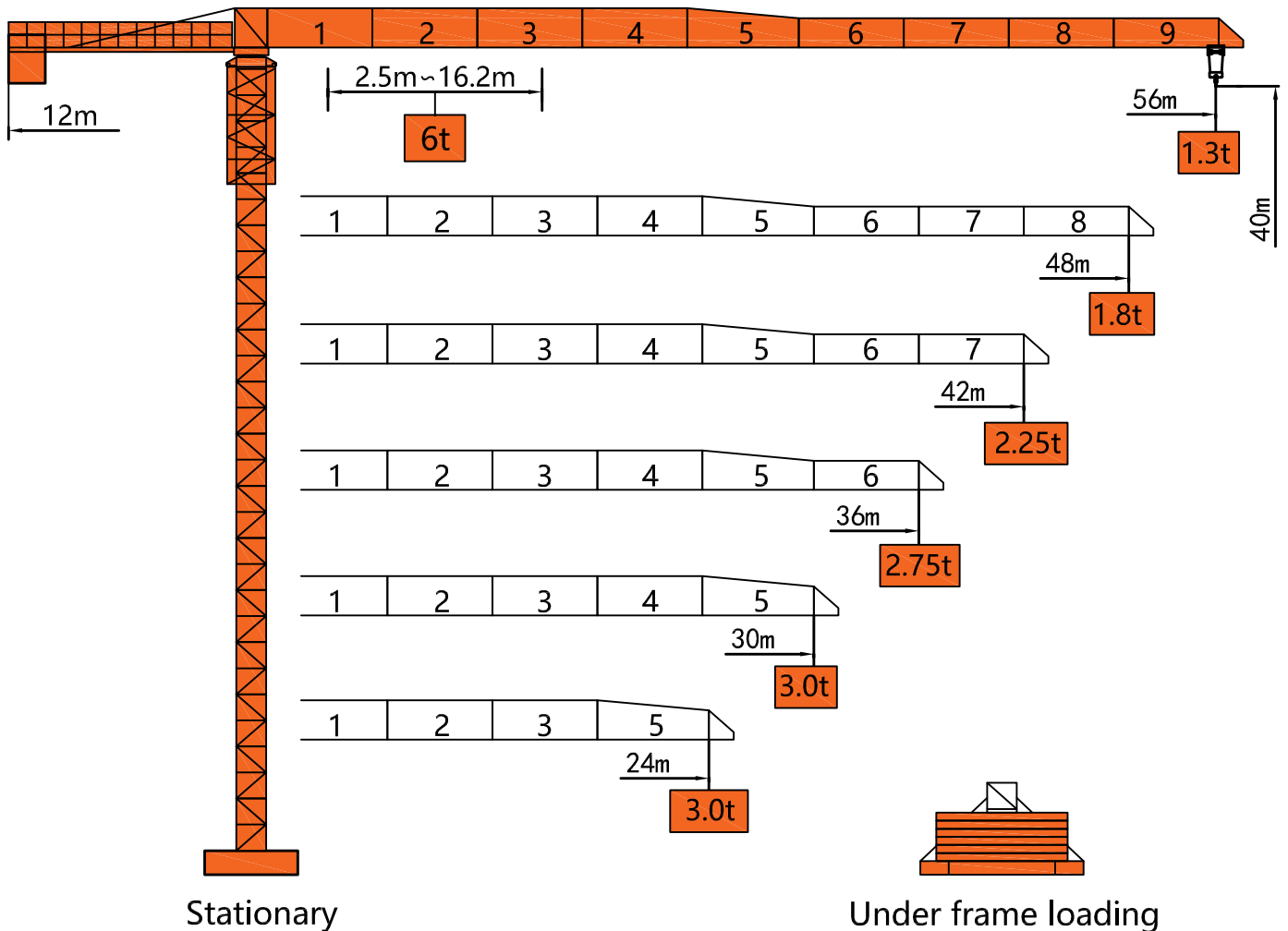
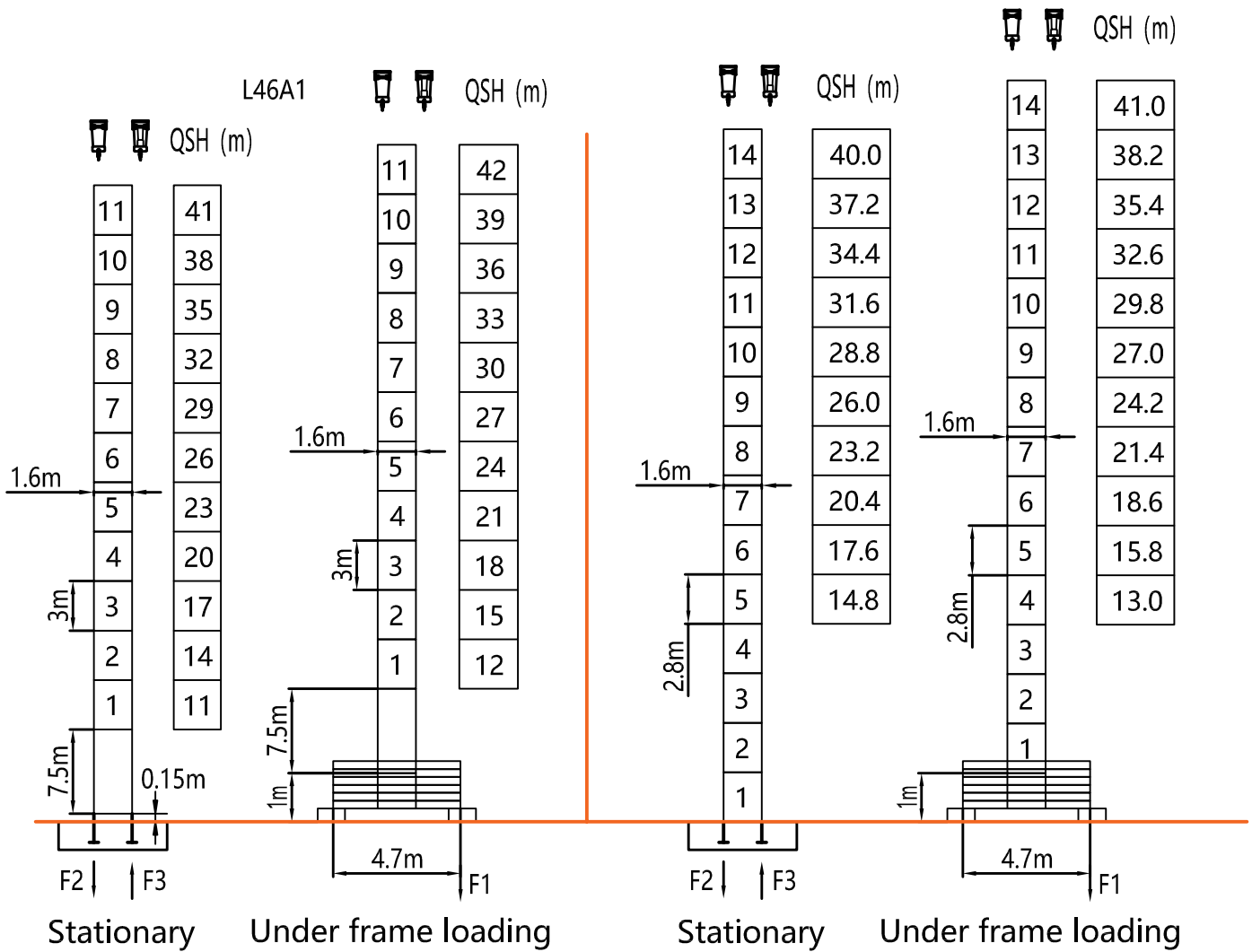


Dimensions



Tower



F2	● 72t	■ 74t
F3	● 53t	■ 55t
⊗	33t	

F1	● 53t	■ 64t
⊗	37t	

F2	● 68t	■ 72t
F3	● 50t	■ 53t
⊗	30t	

F1	● 52t	■ 63t
⊗	34t	

QSH: Height of The Hook ● In Service ■ Out of Service

⊗ Weight with max free-standing height and max jib (without counter-weight and load)

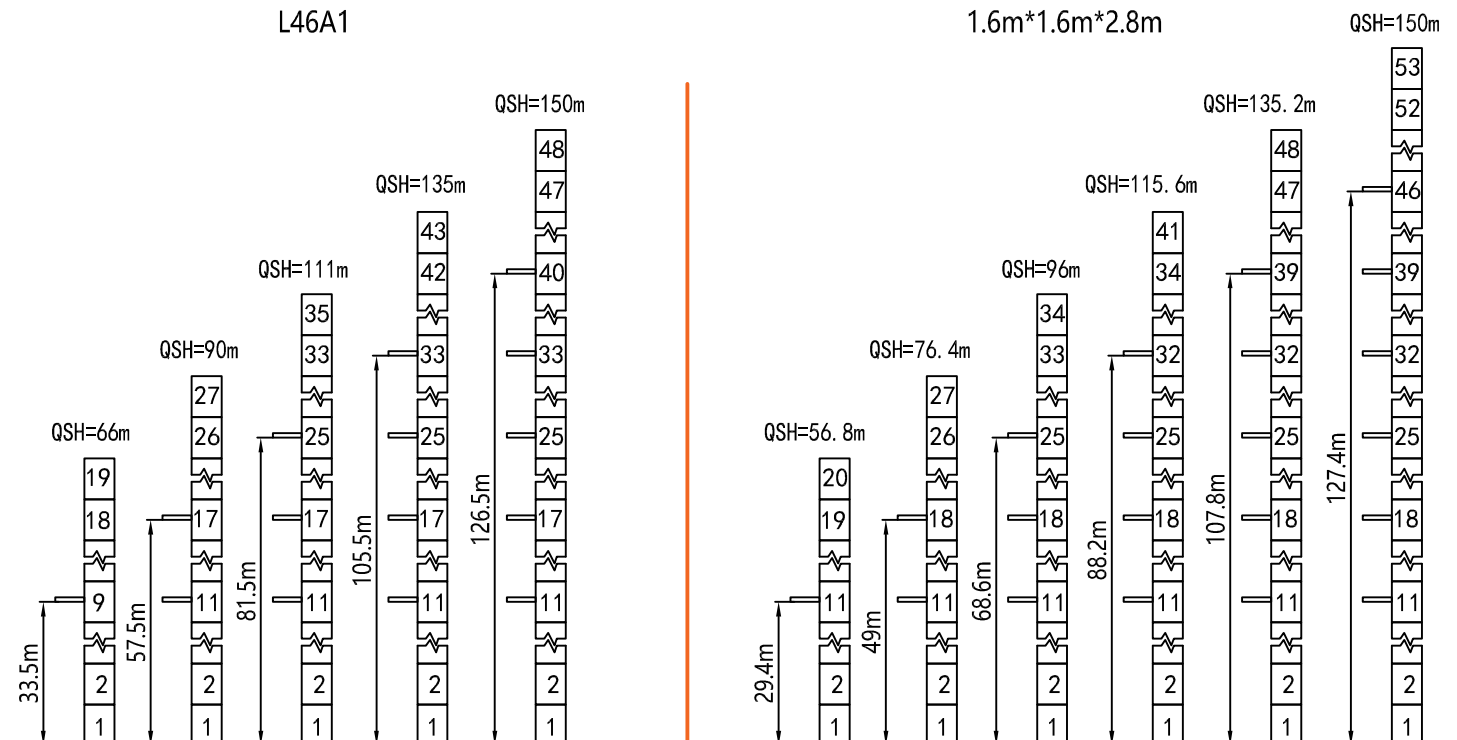
Load Diagrams

Jib		Max Load		Mxt												
m	rope	t	m	17	18	19	20	21	22	23	24	30	36	42	48	56
56	☞	3.0	30.4	3.0									2.43	1.98	1.64	1.30
	☞☞	6.0	16.7	5.90	5.52	5.19	4.89	4.62	4.38	4.15	3.95	3.00	2.37	1.92	1.58	1.24
48	☞	3.0	32.5	3.0									2.64	2.16	1.80	
	☞☞	6.0	17.8	6.00	5.96	5.61	5.28	4.99	4.73	4.49	4.27	3.26	2.58	2.10	1.74	
42	☞	3.0	33.5	3.0									2.75	2.25		
	☞☞	6.0	18.4	6.00	6.00	5.80	5.47	5.17	4.90	4.65	4.42	3.38	2.69	2.19		
36	☞	3.0	33.5	3.0									2.75			
	☞☞	6.0	18.4	6.00	6.00	5.80	5.47	5.17	4.90	4.65	4.42	3.38	2.69			
30	☞	3.0	33.5	3.0												
	☞☞	6.0	18.4	6.00	6.00	5.80	5.47	5.17	4.90	4.65	4.42	3.38				
24	☞	3.0	33.5	3.0												
	☞☞	6.0	18.4	6.00	6.00	5.80	5.47	5.17	4.90	4.65	4.42					

Anchorage

Tower crane standard section L46A1

Tower crane standard section 1.6m*1.6m*2.8m



Mechanisms

Mechanisms	Example	Model	Speed (m/min)		Hoist Weight (t)	Rope Capacity	Power
Hoisting		IQ6.80B	☞	0-100	0.8	410m	24kw
				0-40	3.0		
			☜	0-50	1.6		
				0-20	6.0		
Trolleying		BE2455X	0 ~ 40m/min			3.3kw	
Slewing		HR37	0 ~ 0.63r/min			2*3.7kw	
Main Supply						~ 380V(±10%) 50Hz	
Gross Power (Excluding climbing and travelling)						34.7Kw	

Counter-Weight

Jib Length	Balance Arm Length	Coynter-Weight
56m	12m	11.5t
48m	12m	10.3t
42m	12m	9.1t
36m	12m	7.9t
30m	12m	6.7t
24m	12m	6.7t