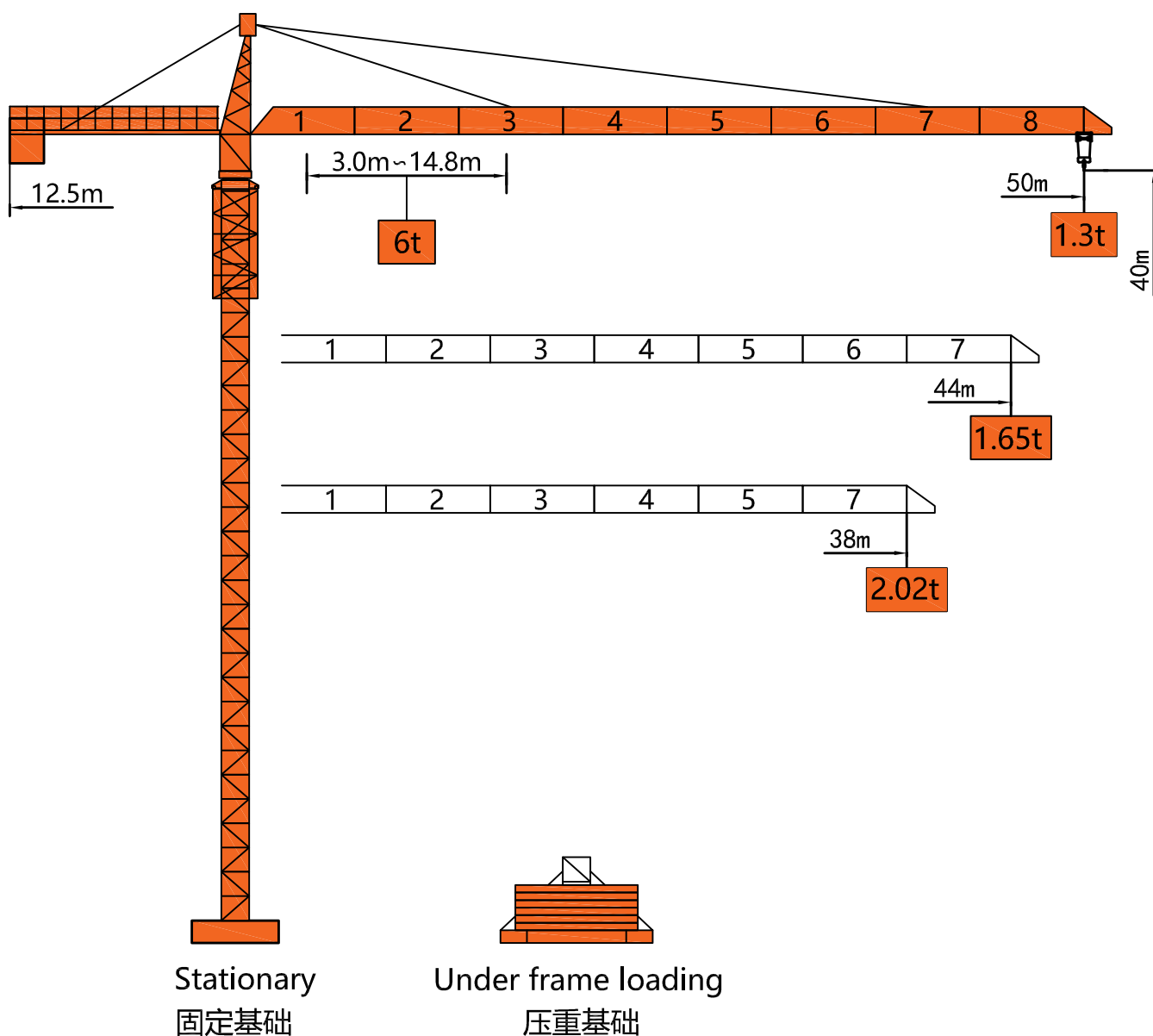
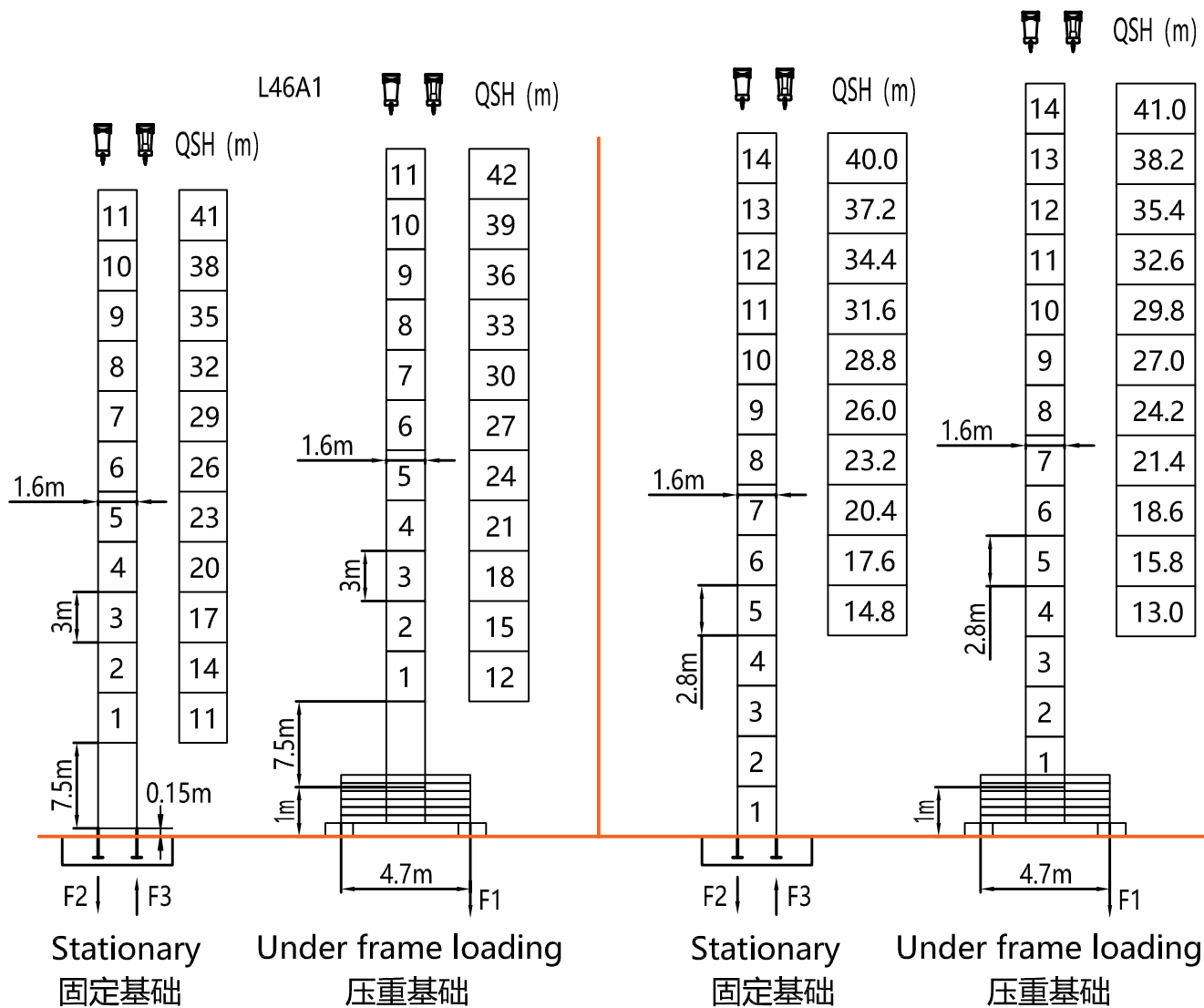


外形尺寸 Dimensions



塔身 Tower



F2	● 66t	■ 70t
F3	● 48t	■ 52t
⊗	30.5t	

F1	● 49t	■ 61t
⊗	34t	

F2	● 63t	■ 66t
F3	● 45t	■ 49t
⊗	27.5t	

F1	● 48t	■ 58t
⊗	31t	

QSH: Height of The Hook ● In Service (工作状态) ■ Out of Service (非工作状态)

⊗ Weight with max free-standing height and max jib (without counter-weight and load) (不含载荷及平衡重, 最大臂长及标准高度时的自重)

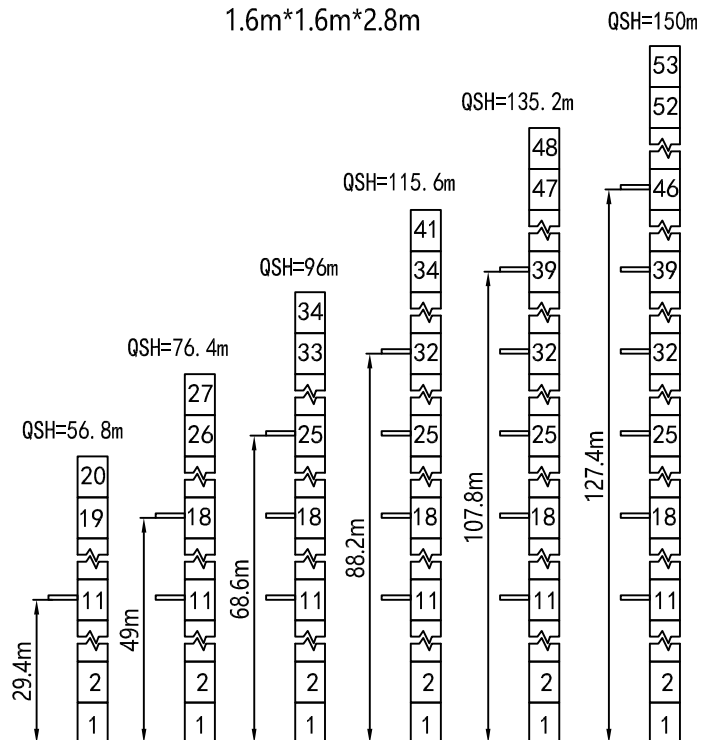
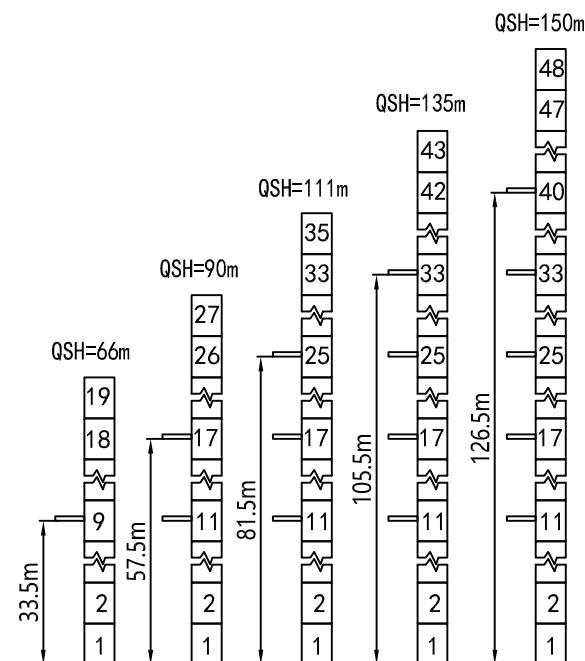
载荷特性 Load Diagrams

Jib		Max Load		Mxt												
m	rope	t	m	18	20	22	24	26	28	30	32	34	36	38	44	50
50	☞	3.0	27.1	3.0					2.89	2.64	2.43	2.25	2.08	1.93	1.57	1.30
	☞☞	6.0	14.8	4.81	4.25	3.79	3.40	3.08	2.81	2.56	2.35	2.17	2.00	1.85	1.49	1.22
44	☞	3.0	28.0	3.0					2.75	2.53	2.34	2.18	2.02	1.65		
	☞☞	6.0	15.3	5.00	4.41	3.94	3.54	3.21	2.92	2.67	2.45	2.26	2.10	1.94	1.57	
38	☞	3.0	28.0	3.0					2.75	2.53	2.34	2.18	2.02			
	☞☞	6.0	15.3	5.00	4.41	3.94	3.54	3.21	2.92	2.67	2.45	2.26	2.10	1.94		

附着示意图 Anchorage

Tower crane standard section L46A1

Tower crane standard section 1.6m*1.6m*2.8m



(由于产品不断改进, 产品配置及技术性能参数如有更改, 以实物为准。With the products continually improved and their design optimized some performance data will be modified without notice.)

机构特性 Mechanisms

Mechanisms	Example	Model	Speed (m/min)		Hoist Weight (t)	Rope Capacity	Power
Hoisting		IQ6.80B	☞	0-9	3.0	410m	24kw
				0-35	3.0		
				0-70	1.5		
			☜	0-4.5	6.0		
				0-17.5	6.0		
				0-35	3.0		
Trolleying		BE2455X	0 ~ 40m/min			3.3kw	
Slewing		HR37	0 ~ 0.63r/min			3.7kw	
Main Supply					~ 380V(±10%) 50Hz		
Gross Power (Excluding climbing and travelling)					31Kw		

平衡重 Counter-Weight

Jib Length 臂长	Balance Arm Length 平衡臂长	Coynter-Weight 平衡重
50m	12m	10.5t
44m	12m	9.3t
38m	12m	8.1t