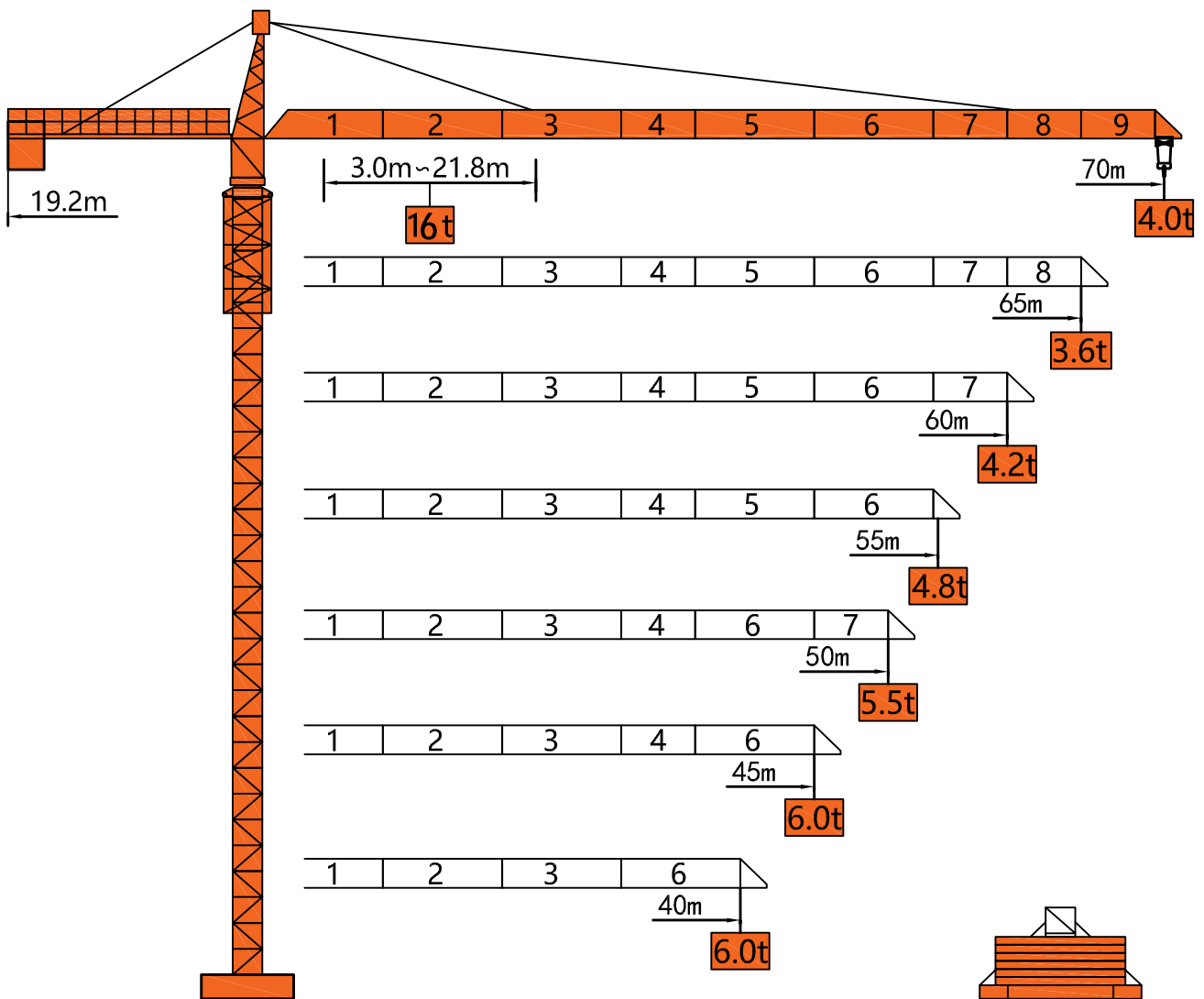




# TC7040-16

## TOWER CRANE SPECIFICATION

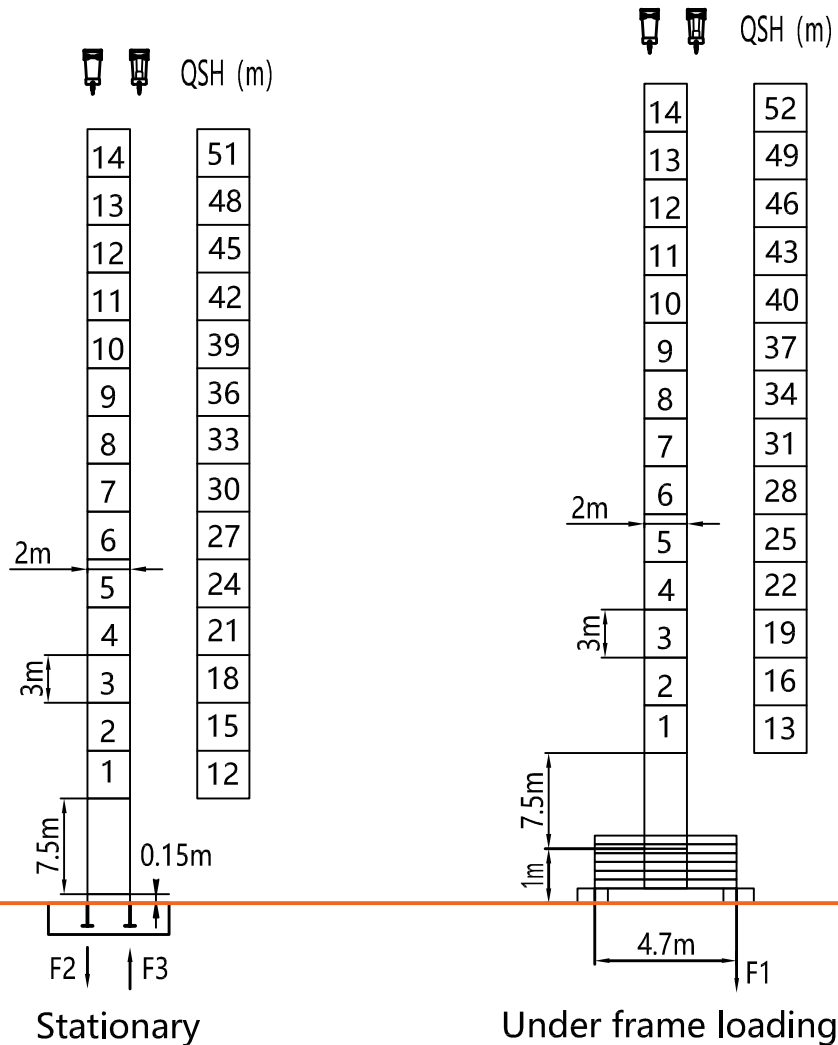
### Dimensions



Stationary

Under frame loading

Tower



F2	● 141t	■ 213t
F3	● 93t	■ 181t
⊗	79t	

F1	● 106t	■ 139t
⊗	87t	

QSH: Height of The Hook    ● In Service                      ■ Out of Service

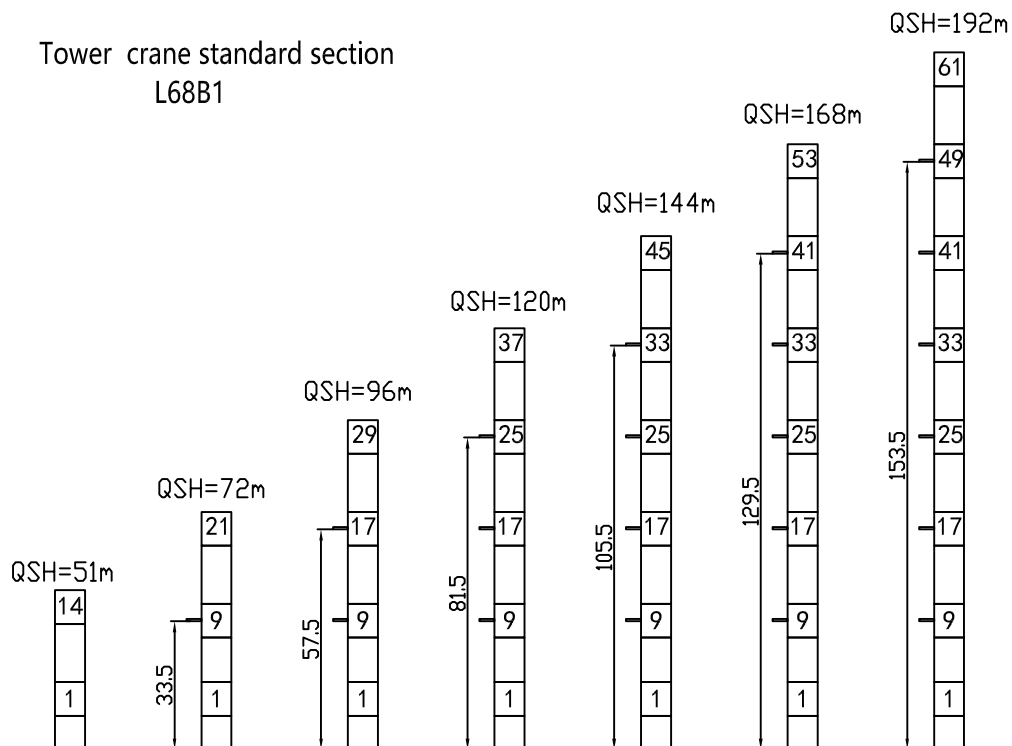
⊗ Weight with max free-standing height and max jib (without counter-weight and load)

**Load Diagrams**

Jib		Max Load		Mxt												
m	rope	t	m	23	25	30	32	35	38	40	45	50	55	60	65	70
70	☞	8.0	38.9	8.0						7.74	6.78	6.00	5.38	4.85	4.41	4.00
	☜	16.0	20.0	13.7	12.5	10.2	9.47	8.53	7.74	7.27	6.31	5.53	4.91	4.38	3.94	3.53
65	☞	8.0	40.4	8.0						7.09	6.81	5.62	5.07	4.60		
	☜	16.0	20.8	14.4	13.1	10.7	9.91	8.93	8.11	7.63	6.62	6.34	5.15	4.60	4.13	
60	☞	8.0	41.3	8.0						7.27	6.44	5.76	5.20			
	☜	16.0	21.3	14.7	13.4	10.9	10.2	9.16	8.32	7.83	6.80	5.97	5.29	4.73		
55	☞	8.0	42.2	8.0						7.43	6.59	5.90				
	☜	16.0	21.7	15.0	13.7	11.2	10.4	9.37	8.52	8.02	6.96	6.12	5.43			
50	☞	8.0	42.8	8.0						7.56	6.70					
	☜	16.0	22.0	15.3	13.9	11.4	10.6	9.53	8.66	8.16	7.09	6.23				
45	☞	8.0	41.5	8.0						7.30						
	☜	16.0	21.4	14.8	13.5	11.0	10.2	9.20	8.36	7.87	6.83					
40	☞	8.0	41.5	8.0												
	☜	16.0	21.4	14.8	13.5	11.0	10.2	9.20	8.36	7.87						

**Anchorage**

Tower crane standard section L68B1



## Mechanisms

Mechanisms	Example	Model	Speed (m/min)	Hoist Weight (t)	Rope Capacity	Power	
Hoisting		55JTVF30		0-100	3.0	520m	55kw
				0-50	8.0		
				0-50	6.0		
				0-25	16.0		
Trolleying		BE2455X	0 ~ 60m/min			7.5kw	
Slewing		HR37	0 ~ 0.80r/min			2*9.0kw	
Main Supply					~ 380V(±10%) 50Hz		
Gross Power (Excluding climbing and travelling)					80.5Kw		

## Counter-Weight

Jib Length	Balance Arm Length	Counter-Weight
70m	19m	25.9t
65m	19m	23.7t
60m	19m	21.5t
55m	19m	19.3t
50m	19m	17.1t
45m	19m	14.9t