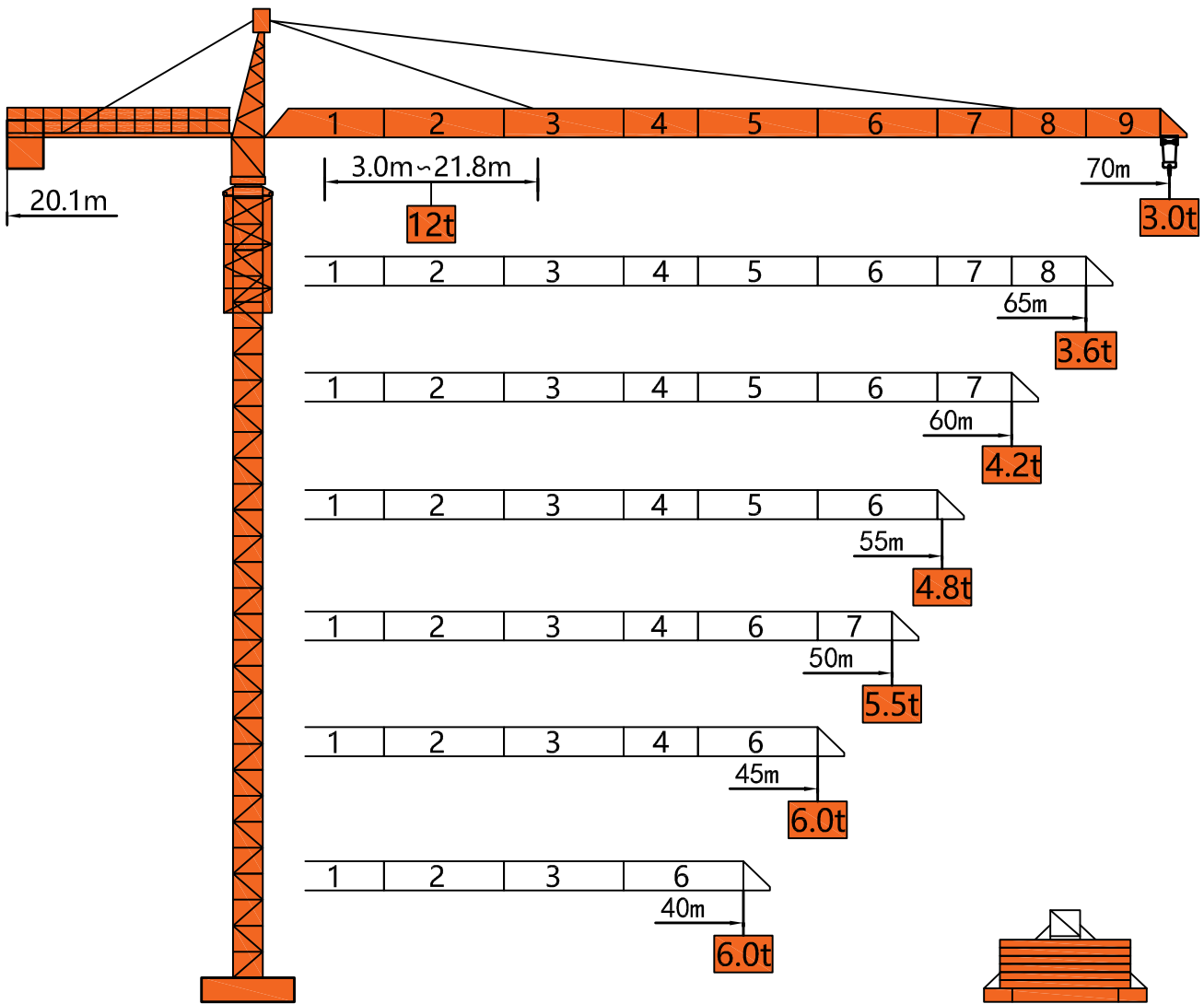




TC7030-12

TOWER CRANE SPECIFICATION

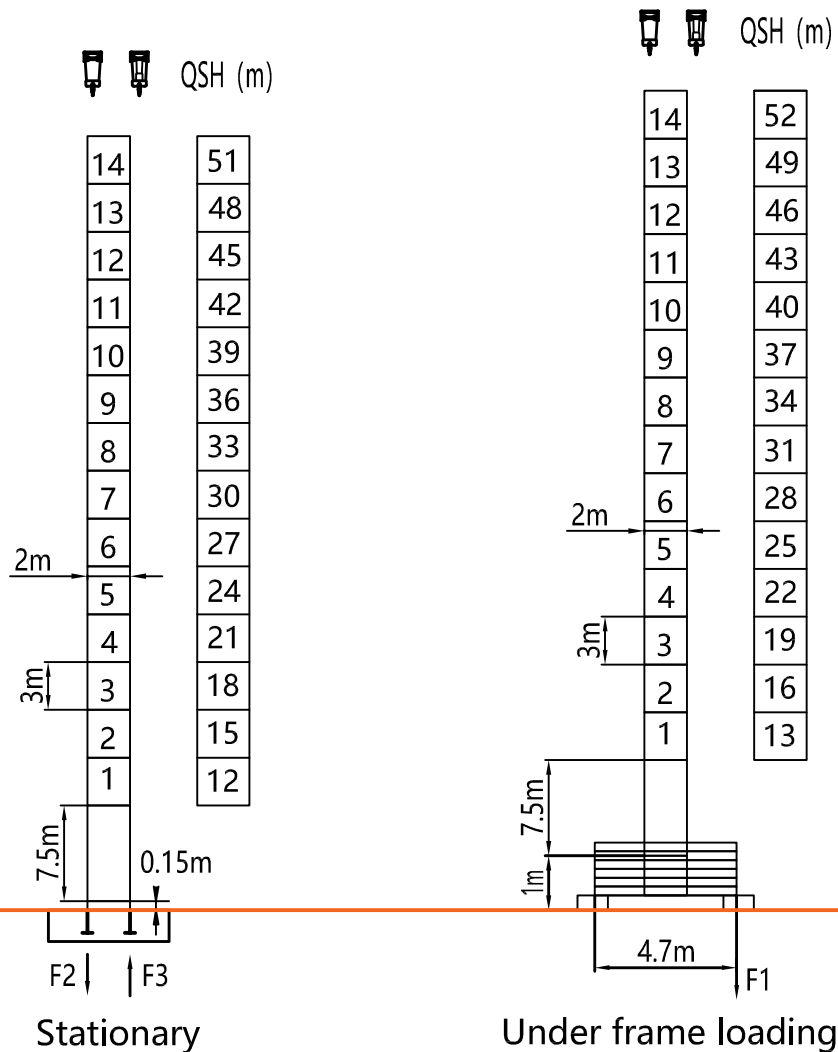
Dimensions



Stationary

Under frame loading

Tower



F2	● 145t	■ 217t
F3	● 96t	■ 185t
⊗	82t	

F1	● 109t	■ 143t
⊗	90t	

QSH: Height of The Hook ● In Service ■ Out of Service

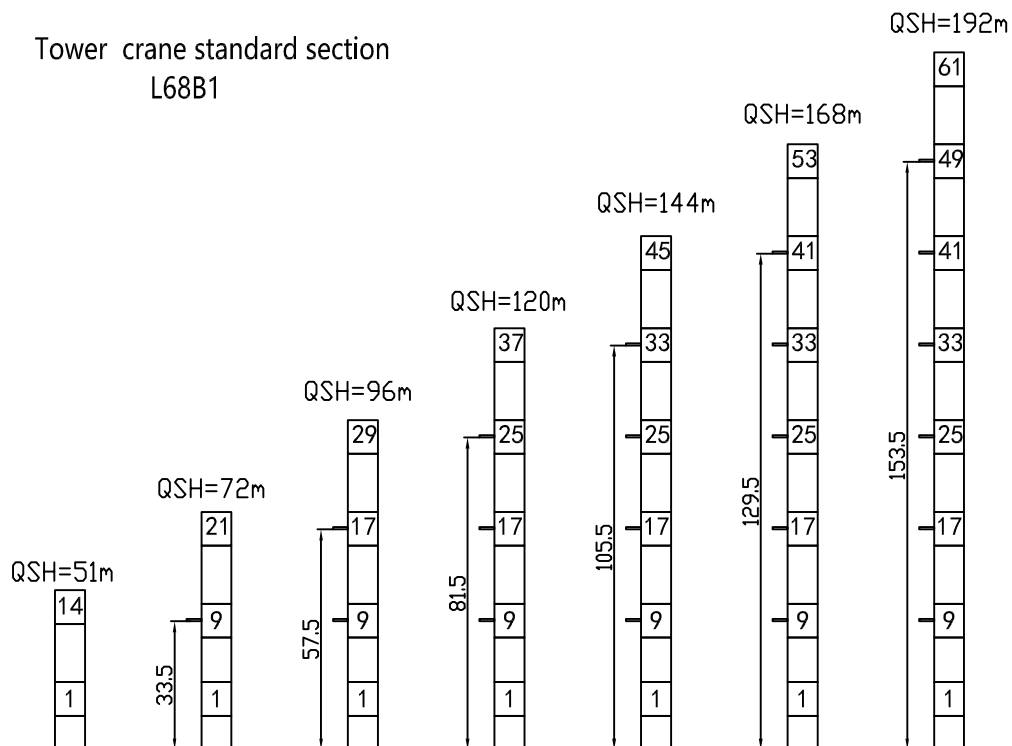
⊗ Weight with max free-standing height and max jib (without counter-weight and load)

Load Diagrams

Jib		Max Load		Mxt												
m	rope	t	m	23	25	30	32	35	38	40	45	50	55	60	65	70
70	☞	6.0	40.5	6.0							5.29	4.65	4.12	3.69	3.31	3.00
	☜	12.0	21.8	11.22	10.22	8.29	7.69	6.92	6.27	5.89	5.09	4.45	3.92	3.49	3.11	2.80
65	☞	6.0	43.1	6.0							5.70	5.02	4.46	3.99	3.60	
	☜	12.0	23.2	12.0	10.9	8.90	8.27	7.45	6.75	6.35	5.50	4.82	4.26	3.79	3.40	
60	☞	6.0	44.8	6.0							5.97	5.26	4.68	4.20		
	☜	12.0	24.1	12.0	11.45	9.32	8.66	7.80	7.08	6.66	5.77	5.06	4.48	4.00		
55	☞	6.0	45.7	6.0							5.39	4.80				
	☜	12.0	24.6	12.0	11.7	9.53	8.86	7.98	7.25	6.82	5.92	5.19	4.60			
50	☞	6.0	46.5	6.0							5.50					
	☜	12.0	24.8	12.0	11.9	9.71	9.02	8.14	7.39	6.96	6.03	5.30				
45	☞	6.0	45.0	6.0							6.00					
	☜	12.0	24.2	12.0	11.5	9.36	8.69	7.83	7.11	6.69	5.80					
40	☞	6.0	45.0	6.0												
	☜	12.0	24.2	12.0	11.5	9.36	8.69	7.83	7.11	6.69						

Anchorage

Tower crane standard section L68B1



Mechanisms

Mechanisms	Example	Model	Speed (m/min)	Hoist Weight (t)	Rope Capacity	Power	
Hoisting		55JTVF30	☺	0-100	2.0	600m	55kw
				0-50	6.0		
			☹	0-50	4.0		
				0-25	12.0		
Trolleying		BE2455X	0 ~ 58m/min			7.5kw	
Slewing		HR37	0 ~ 0.82r/min			2*5.5kw	
Main Supply					~ 380V(±10%) 50Hz		
Gross Power (Excluding climbing and travelling)					73.5Kw		

Counter-Weight

Jib Length	Balance Arm Length	Counter-Weight
70m	19m	25.9t
65m	19m	23.7t
60m	19m	21.5t
55m	19m	19.3t
50m	19m	17.1t
45m	19m	14.9t