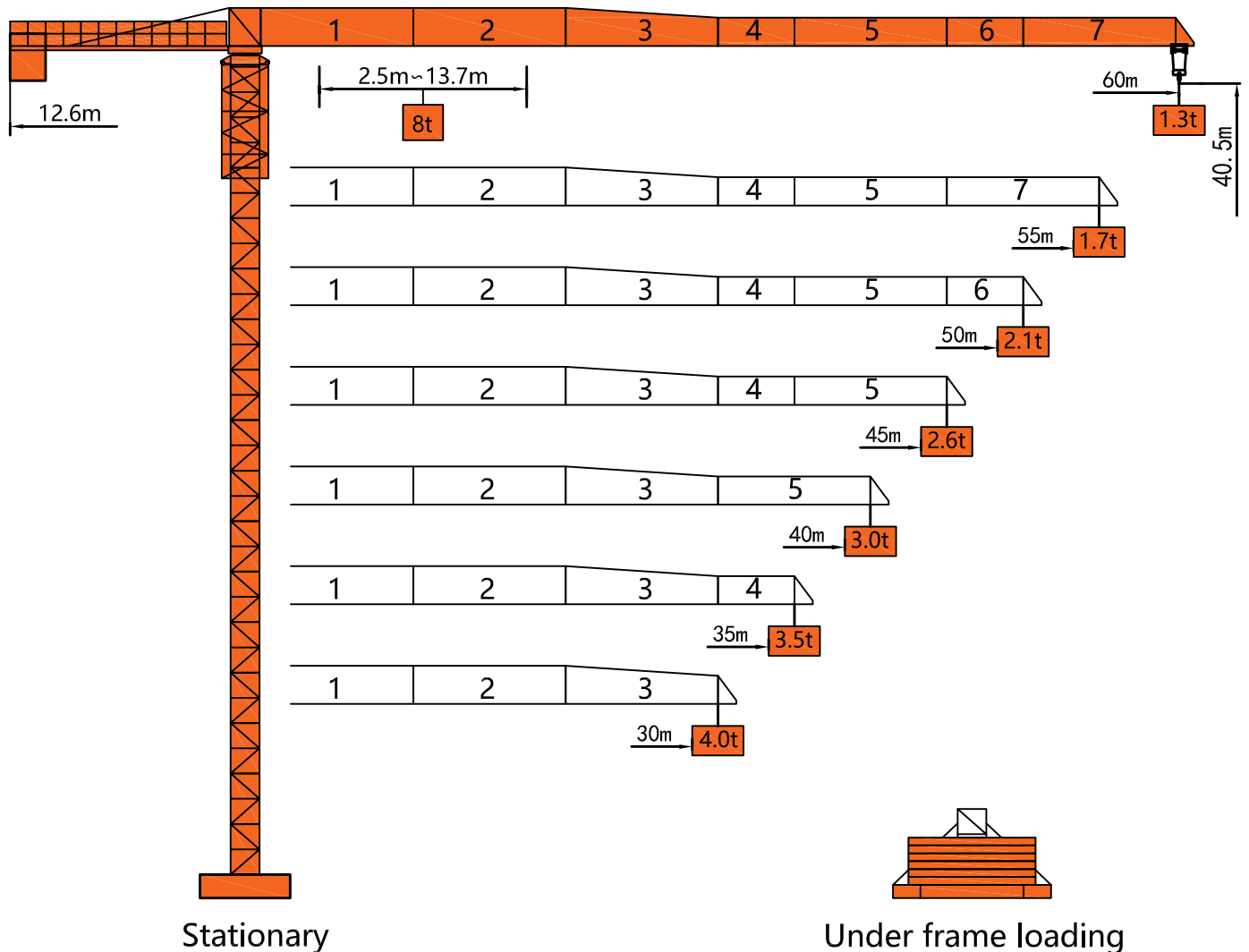
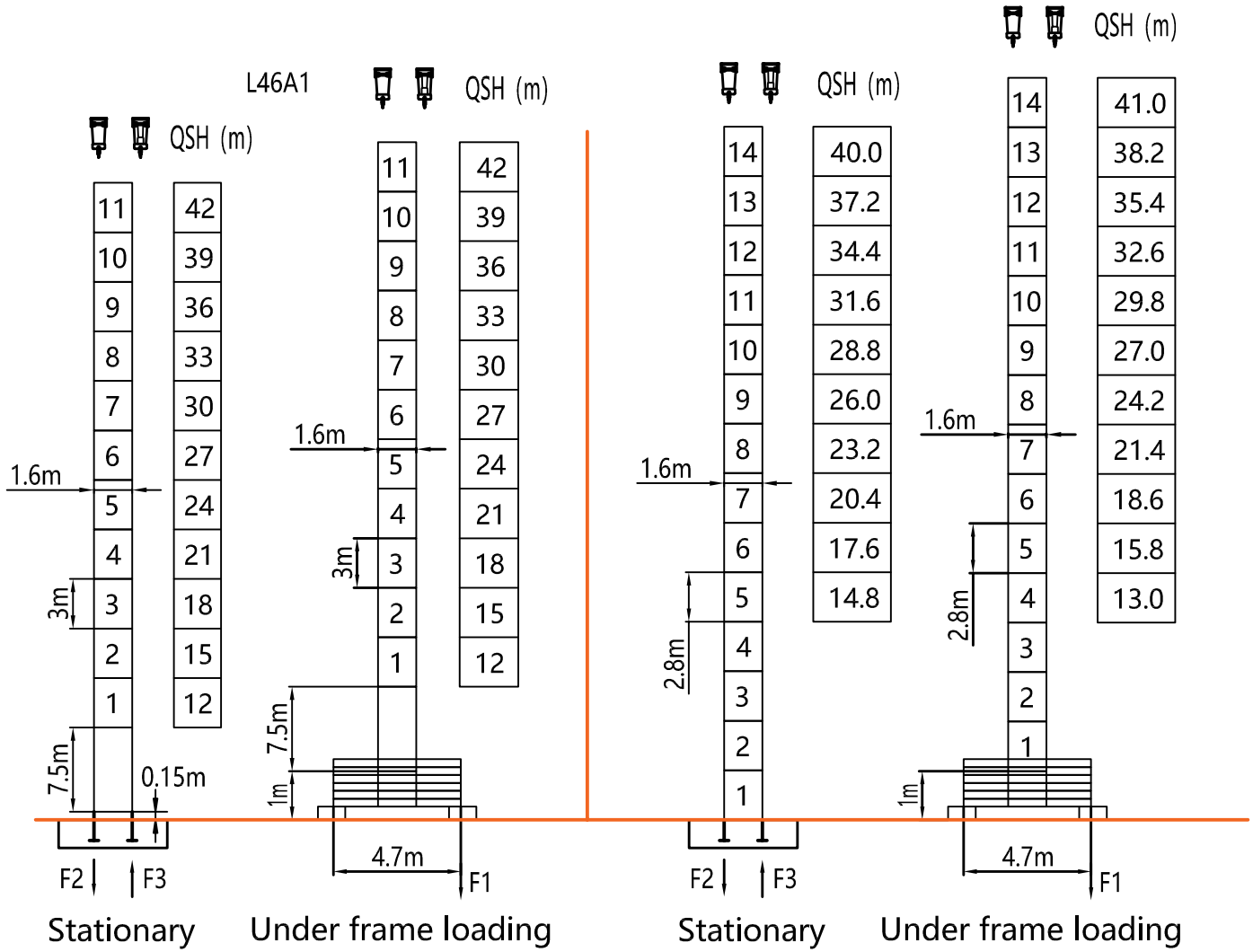


#### Dimensions



Tower



F2	● 94t	■ 113t
F3	● 61t	■ 87t
⊗	37t	

F1	● 62t	■ 81t
⊗	42t	

F2	● 91t	■ 99t
F3	● 58t	■ 83t
⊗	34t	

F1	● 59t	■ 78t
⊗	39t	

QSH: Height of The Hook    ● In Service    ■ Out of Service

⊗ Weight with max free-standing height and max jib (without counter-weight and load)

## Load Diagrams

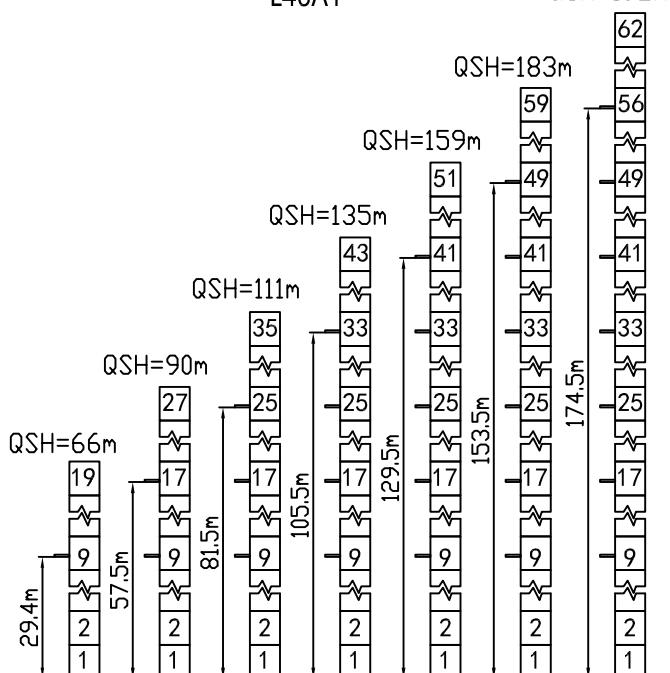
Jib		Max Load		Mxt													
m	rope	t	m	16	20	22	24	26	28	30	35	40	45	50	55	60	
60	☞	4.0	25.5	4.0					3.92	3.59	3.30	2.73	2.30	1.97	1.70	1.48	1.30
	☞☞	8.0	13.7	6.72	5.22	4.67	4.22	3.84	3.51	3.22	2.65	2.22	1.89	1.62	1.40	1.22	
55	☞	4.0	28.1	4.0					3.70	3.07	2.60	2.23	1.94	1.70			
	☞☞	8.0	15.1	7.47	5.82	5.22	4.72	4.30	3.93	3.62	2.98	2.52	2.15	1.86	1.62		
50	☞	4.0	30.3	4.0								3.37	2.86	2.47	2.10		
	☞☞	8.0	16.2	8.00	6.34	5.70	5.16	4.70	4.31	3.97	3.29	2.78	2.39	2.02			
45	☞	4.0	31.6	4.0								3.54	3.00	2.60			
	☞☞	8.0	16.9	8.00	6.65	5.97	5.41	4.93	4.52	4.17	3.46	2.92	2.52				
40	☞	4.0	31.6	4.0								3.54	3.00				
	☞☞	8.0	16.9	8.00	6.65	5.97	5.41	4.93	4.52	4.17	3.46	2.92					
35	☞	4.0	31.6	4.0								3.54					
	☞☞	8.0	16.9	8.00	6.65	5.97	5.41	4.93	4.52	4.17	3.46						
30	☞	4.0	31.6	4.0													
	☞☞	8.0	16.9	8.00	6.65	5.97	5.41	4.93	4.52	4.17							

## Anchorage

Tower crane standard section

L46A1

QSH=192m

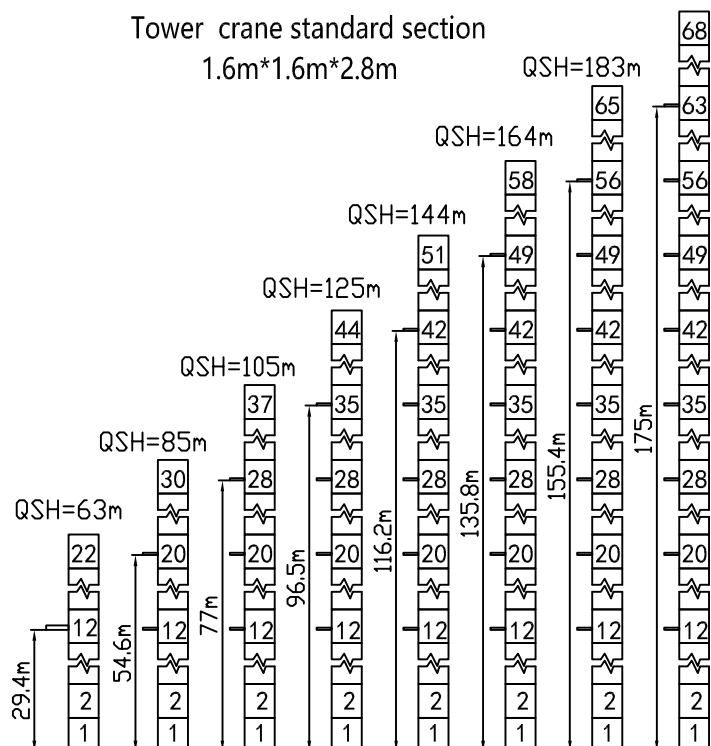


Tower crane standard section

1.6m\*1.6m\*2.8m

QSH=183m

QSH=192m



## Mechanisms

Mechanisms	Example	Model	Speed (m/min)		Hoist Weight (t)	Rope Capacity	Power
Hoisting		IQ8.80P		0-76	1.4	420m	30kw
				0-38	4.0		
				0-76	2.8		
				0-38	8.0		
Trolleying		BE2455X	0 ~ 40m/min			4.0kw	
Slewing		HR37	0 ~ 0.63r/min			2*4.0kw	
Main Supply					~ 380V(±10%) 50Hz		
Gross Power (Excluding climbing and travelling)					42Kw		

## Counter-Weight

Jib Length	Balance Arm Length	Counter-Weight
60m	12.6m	17.8t
55m	12.6m	16.5t
50m	12.6m	15.8t
45m	12.6m	14.5t
40m	12.6m	13.2t
35m	12.6m	11.7t
30m	12.6m	10.2t