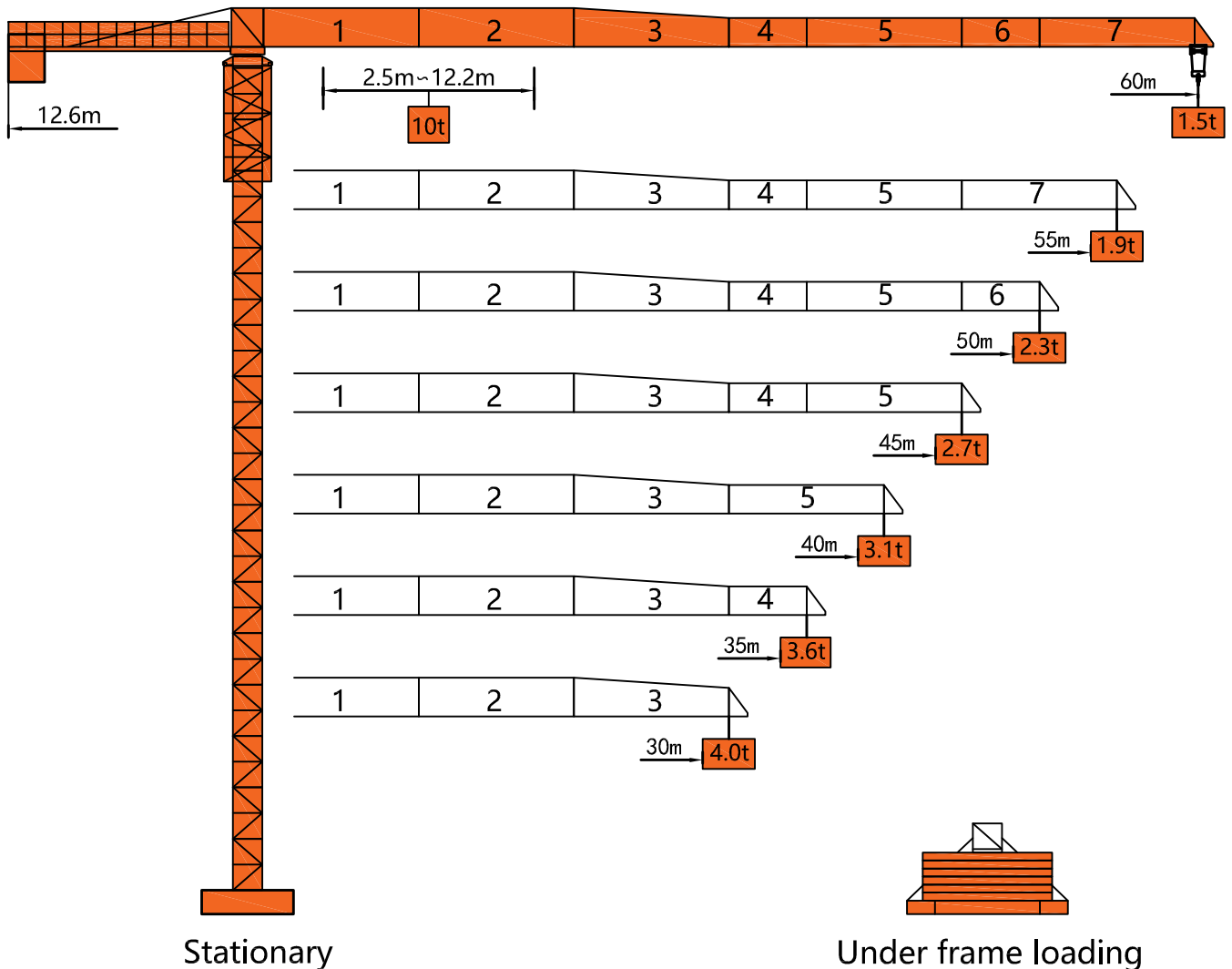
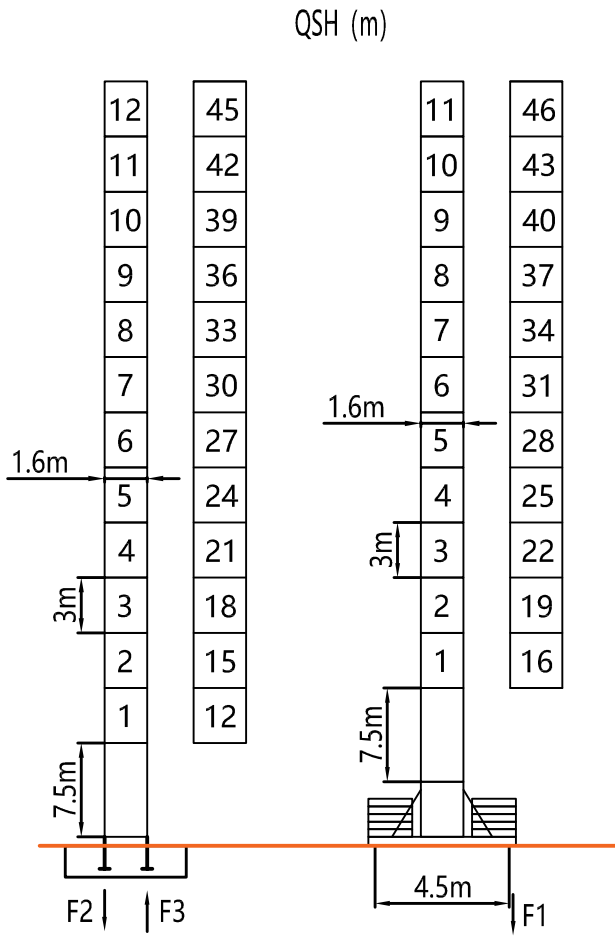


Dimensions



Tower

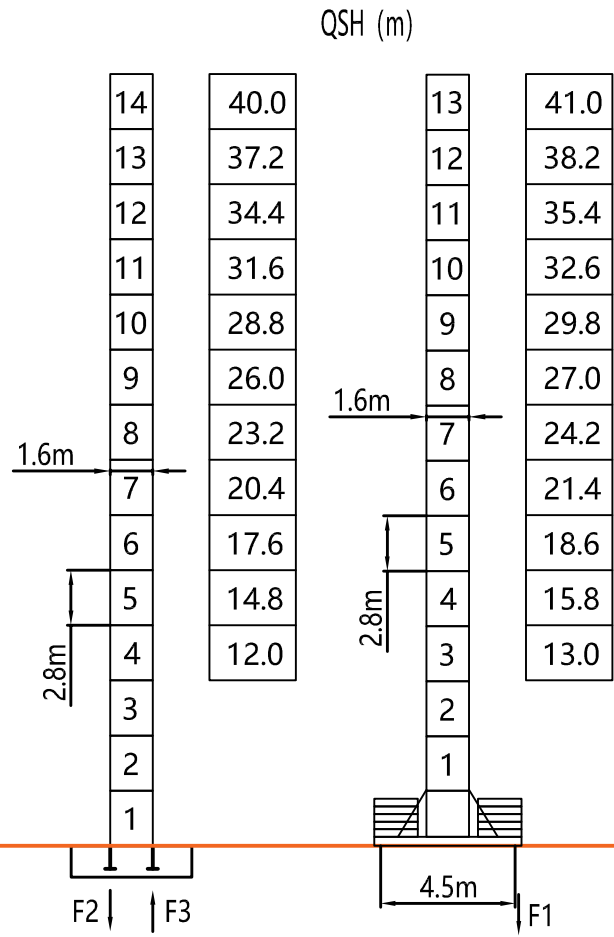


Stationary
固定基础

Under frame loading
压重基础

F2	● 95t	■ 113t
F3	● 63t	■ 87t
⊗	38t	

F1	● 62t	■ 81t
⊗	42t	



Stationary
固定基础

Under frame loading
压重基础

F2	● 92t	■ 99t
F3	● 59t	■ 84t
⊗	35t	

F1	● 59t	■ 78t
⊗	39t	

QSH: Height of The Hook ● In Service ■ Out of Service

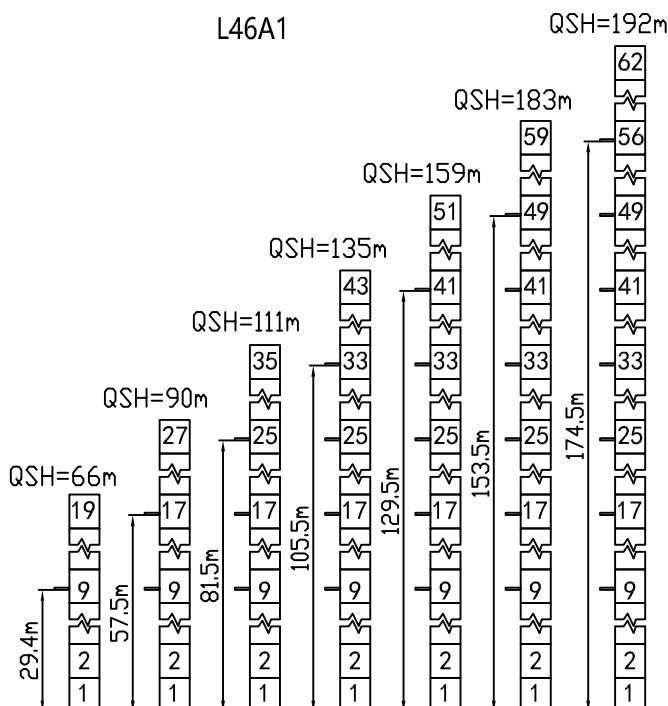
⊗ Weight with max free-standing height and max jib (without counter-weight and load)

Load Diagrams

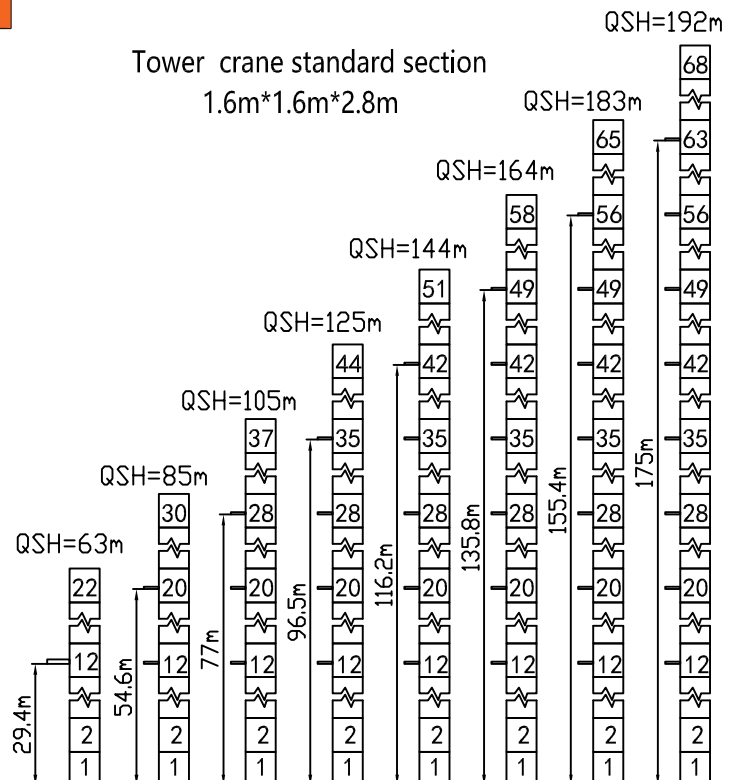
Jib		Max Load		Mxt												
m	rope	t	m	18	20	22	24	26	28	30	35	40	45	50	55	60
60	☞	5	23.1	5.0			4.80	4.38	4.01	3.70	3.07	2.60	2.23	1.94	1.70	1.50
	☞☞	10	12.2	6.55	5.82	5.22	4.72	4.30	3.93	3.62	2.99	2.52	2.15	1.86	1.62	1.42
55	☞	5	25.1	5.0			4.80	4.41	4.07	3.39	2.88	2.48	2.16	1.90		
	☞☞	10	13.3	7.16	6.37	5.72	5.18	4.72	4.33	3.99	3.31	2.80	2.40	2.08	1.82	
50	☞	5	26.3	5.0				4.66	4.30	3.59	3.05	2.63	2.30			
	☞☞	10	13.9	7.55	6.72	6.04	5.47	4.99	4.58	4.22	3.51	2.97	2.58	2.22		
45	☞	5	26.8	5.0				4.76	4.40	3.67	3.12	2.70				
	☞☞	10	14.2	7.72	6.87	6.17	5.60	5.10	4.68	4.32	3.58	3.04	2.62			
40	☞	5	26.8	5.0				4.76	4.40	3.67	3.10					
	☞☞	10	14.2	7.72	6.87	6.17	5.60	5.10	4.68	4.32	3.58	3.02				
35	☞	5	26.8	5.0				4.76	4.40	3.60						
	☞☞	10	14.2	7.72	6.87	6.17	5.60	5.10	4.68	4.32	3.52					
30	☞	5	26.8	5.0				4.76	4.40							
	☞☞	10	14.2	7.72	6.87	6.17	5.60	5.10	4.68	4.32						

Anchorage

Tower crane standard section
L46A1



Tower crane standard section
1.6m*1.6m*2.8m



Mechanisms

Mechanisms	Example	Model	Speed (m/min)		Hoist Weight (t)	Rope Capacity	Power
Hoisting		IQ8.80P		0-76	1.4	420m	37kw
				0-38	4.0		
				0-76	2.8		
				0-38	8.0		
Trolleying		BE2455X	0 ~ 40m/min			4.0kw	
Slewing		HR37	0 ~ 0.63r/min			2*4.0kw	
Main Supply						~ 380V(±10%) 50Hz	
Gross Power (Excluding climbing and travelling)						49Kw	

Counter-Weight

Jib Length	Balance Arm Length	Counter-Weight
60m	12.6m	17.8t
55m	12.6m	16.5t
50m	12.6m	15.8t
45m	12.6m	14.5t
40m	12.6m	13.2t
35m	12.6m	11.7t
30m	12.6m	10.2t