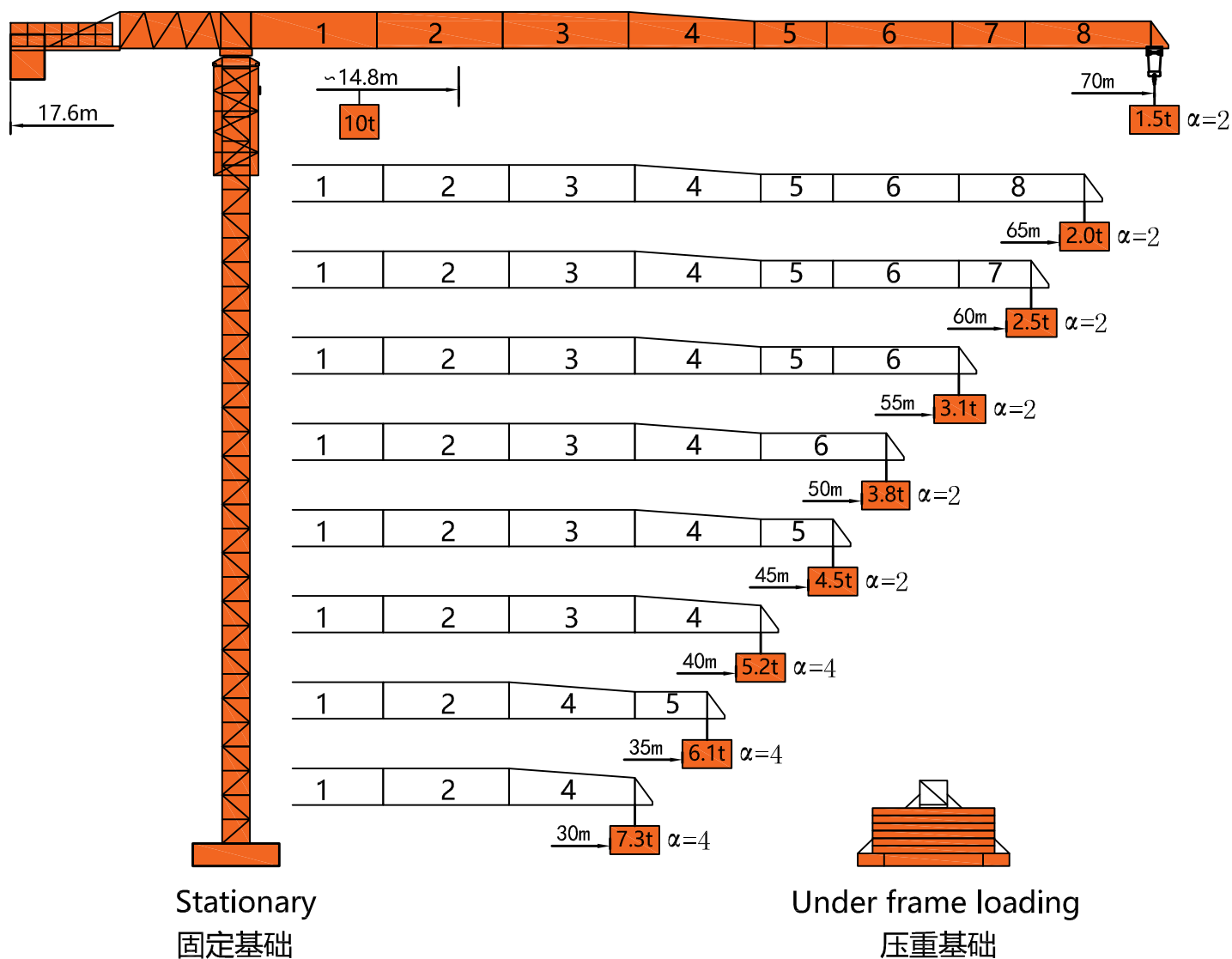
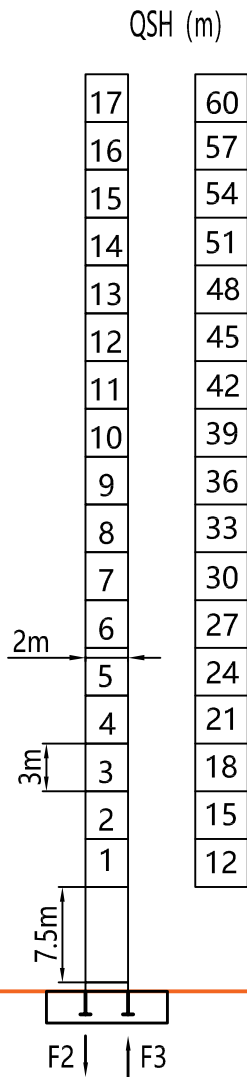


外形尺寸 Dimensions

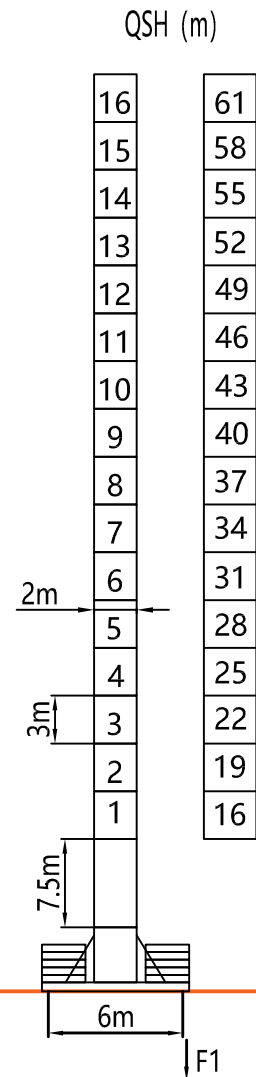


塔身 Tower



Stationary
固定基础

F2	● 152t	■ 206t
F3	● 89t	■ 150t
⊗	90t	



Under frame loading
压重基础

F1	● 118t	■ 130t
⊗	105t	

QSH: Height of The Hook ● In Service (工作状态) ■ Out of Service (非工作状态)

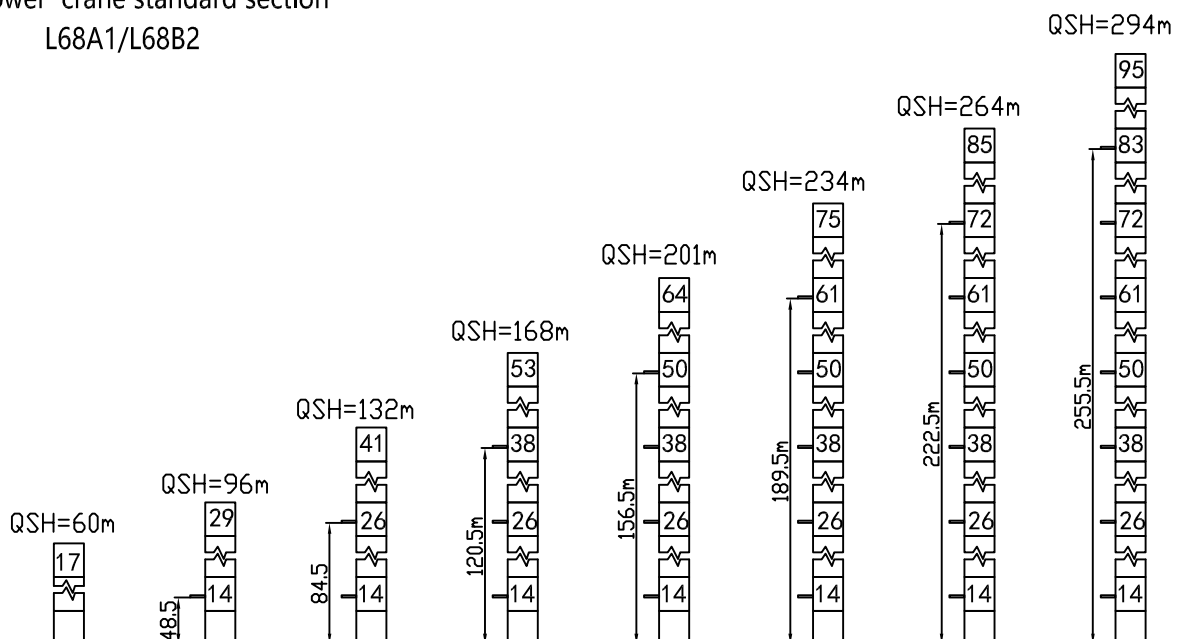
⊗ Weight with max free-standing height and max jib (without counter-weight and load) (不含载荷及平衡重, 最大臂长及标准高度时的自重)

载荷特性 Load Diagrams

m	Jib rope	Max Load		Mxt													
		t	m	20	22	25	28	30	35	40	45	50	55	60	65	70	
70	☞	5	27.9	5.0					4.59	3.82	3.24	2.79	2.43	2.13	1.89	1.68	1.50
	☜	10	14.8	7.15	6.41	5.53	4.83	4.44	3.67	3.09	2.64	2.28	1.98	1.74	1.53	1.35	
65	☞	5	31.5	5.0					4.42	3.76	3.25	2.85	2.51	2.23	2.00		
	☜	10	16.7	8.20	7.36	6.36	5.58	5.14	4.27	3.61	3.10	2.70	2.36	2.08	1.85		
60	☞	5	34.2	5.0					4.87	4.16	3.61	3.16	2.80	2.50			
	☜	10	18.1	8.99	8.08	7.00	6.14	5.67	4.72	4.01	3.46	3.01	2.65	2.35			
55	☞	5	37.0	5.0					4.57	3.97	3.49	3.10					
	☜	10	19.6	9.81	8.83	7.65	6.73	6.22	5.19	4.42	3.82	3.34	2.95				
50	☞	5	39.6	5.0					4.96	4.31	3.80						
	☜	10	21.0	10.0	9.53	8.27	7.28	6.73	5.63	4.81	4.16	3.65					
45	☞	5	41.1	5.0					4.50								
	☜	10	21.8	10.0	9.91	8.60	7.58	7.01	5.87	5.02	4.35						
40	☞	5	40.0	5.0													
	☜	10	22.4	10.0	10.0	8.90	7.84	7.26	6.08	5.20							
35	☞	5	35.0	5.0													
	☜	10	22.5	10.0	10.0	8.93	7.87	7.28	6.10								
30	☞	5	30.0	5.0													
	☜	10	22.6	10.0	10.0	8.95	7.89	7.30									

附着示意图 Anchorage

Tower crane standard section
L68A1/L68B2



(由于产品不断改进, 产品配置及技术性能参数如有更改, 以实物为准。With the products continually improved and their design optimized some performance data will be modified without notice.)

机构特性 Mechanisms

Mechanisms	Example	Model	Speed (m/min)	Hoist Weight (t)	Rope Capacity	Power	
Hoisting		37IQ25A	☞	0-90	1.6	640m	37kw
				0-78	2.5		
				0-39	5		
			☜	0-45	3.2		
				0-39	5		
				0-19.5	10		
Trolleying		BE2455X	0 ~ 58m/min			5.5kw	
Slewing		HR75	0 ~ 0.7r/min			2*5.5kw	
Main Supply					~ 380V(±10%) 50Hz		
Gross Power (Excluding climbing and travelling)					53.5Kw		

平衡重 Counter-Weight

Jib Length 臂长	Balance Arm Length 平衡臂长	Coynter-Weight 平衡重
70m	17.6m	19.1t
65m	17.6m	17.8t
60m	17.6m	17.8t
55m	17.6m	16.6t
50m	17.6m	15.3t
45m	17.6m	15.3t
40m	17.6m	13.5t
35m	17.6m	11.6t
30m	17.6m	10.5t