

SUNTEC

Orcher Hill Industrial Zone . Jinan 250200

Web: www.china-hoist.com

Email: admin@china-hoist.com

Mob: +86 13954131219

Fax: 86-531-83269577



本产品手册系列技术参数不受法律约束，详细技术参数请见产品说明书。

企业产品手册 Product Handbook



SUNTEC

选择我们，就是选择专业和放心 >>>

用我的臂膀 建您的丰碑

Our Dedication, Your Monmentum





公司简介 | COMPANY PROFILE

Suntec Construction Machinery Co.,Ltd , is a large-scale manufacturing-type enterprise in construction industry of tower crane and construction elevator in China, Founded in 2010, after 13 years of high-speed development, at present, annual production is over ten thousand units. manufacturing base focus in Zhenshan industrial park, Mingshui economic development of Jinan, is a leading brand for Tower Crane and construction hoist in China. We have been exported to over 20 countries and regions,we are focused on the best quality and service in construction machinery.Since the establishment of the company adhere to the technology works way, fully rely on scientific research units and institutions of science and technology advantages and its own strength, has developed and produced various types of construction hoist products and tower crane products.The factory is equipped with specializing production center, such as metal structure, mechanical processing, heat treatment, and production package lines.Sinocorp tower crane products are recognized and welcomed by foreign customers based on advanced technology, excellent quality, competitive price and perfect service. we are dedicated to creating the top Chinese brand of tower cranes and construction hoist!



目录 **DIRECTORY**

塔头式塔式起重机系列

TC7025-12	03
TC5013-5	07
TC5013-6	11
TC5610-5	15
TC5612-6	19
TC6012-6	23
TC6015-8	27
TC6015-10	31
TC6515-8	35
TC6515-10	39
TC7030-12	43
TC7040-16	47

平头式塔式起重机系列

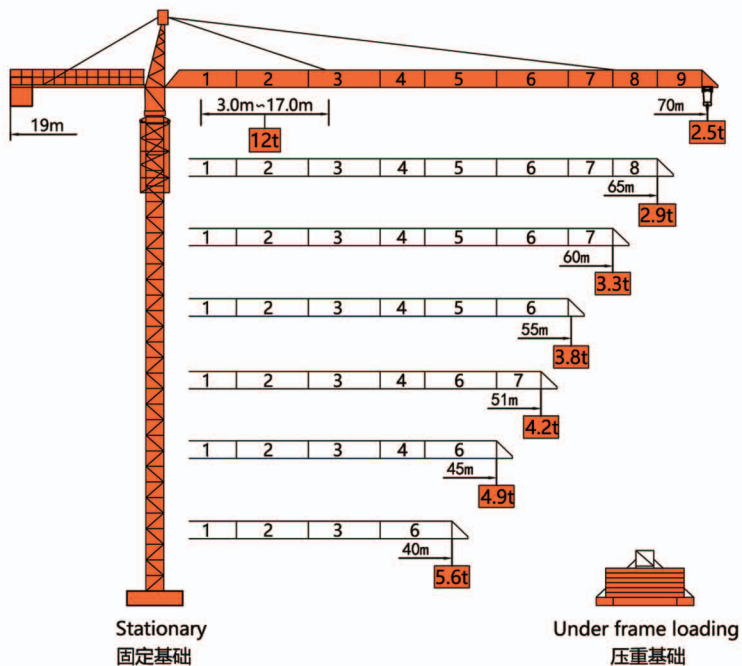
PT5013-5	53
PT5512-5	57
PT5613-6	61
PT6013-6	65
PT6013-8	69
PT6015-8	73
PT6516-8	77
PT6516-10	81
PT7025-12	85
SC200	89

SUNTEC

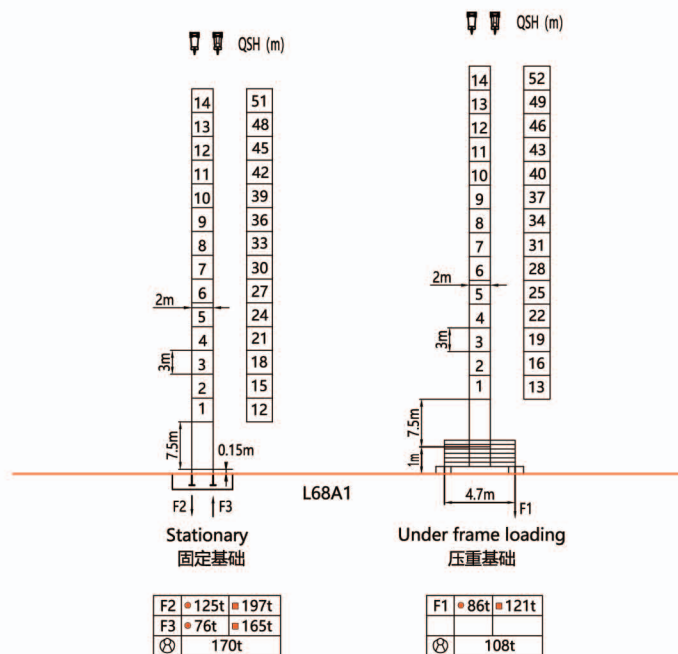


塔头式塔式起重机系列

外形尺寸 Dimensions



塔身 Tower



QSH: Height of The Hook • In Service (工作状态) ■ Out of Service (非工作状态)

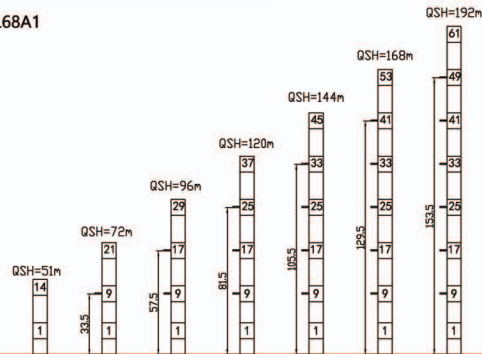
⊗ Weight with max free-standing height and max jib (without counter-weight and load) (不含载重及平衡重, 最大臂长及标准高度时的自重)

载荷特性 Load Diagrams

Jib		Max Load																					
m	rope	t	m	20	22	25	28	32	35	40	45	50	55	60	65	70							
70	☐	6.0	33.5	6.0										5.72	4.91	4.29	3.79	3.38	3.03	2.75	2.50		
	☐	12.0	17.4	10.35	9.33	8.08	7.13	6.12	5.52	4.71	4.09	3.59	3.18	2.83	2.55	2.30							
65	☐	6.0	35.4	6.0										5.22	4.56	4.02	3.58	3.21	2.90				
	☐	12.0	18.5	11.07	9.97	8.65	7.62	6.53	5.89	5.02	4.36	3.82	3.38	3.01	2.70								
60	☐	6.0	36.2	6.0										5.36	4.67	4.12	3.67	3.30					
	☐	12.0	18.9	12.34	10.20	8.87	7.80	6.70	6.04	5.16	4.47	3.92	3.47	3.10									
55	☐	6.0	37.2	6.0										5.53	4.82	4.26	3.80						
	☐	12.0	19.5	11.7	10.5	9.14	8.05	6.92	6.24	5.33	4.62	4.06	3.60										
51	☐	6.0	37.5	6.0										5.58	4.87	4.20							
	☐	12.0	19.7	11.8	10.6	9.22	8.12	6.98	6.29	5.53	4.82	4.26	3.80										
45	☐	6.0	37.5	6.0										5.58	4.90								
	☐	12.0	19.7	11.8	10.6	9.22	8.12	6.98	6.29	5.58	4.70												
40	☐	6.0	37.5	6.0										5.60									
	☐	12.0	19.7	11.8	10.6	9.22	8.12	6.98	6.29	5.40													

附着示意图 Anchorage

L68A1

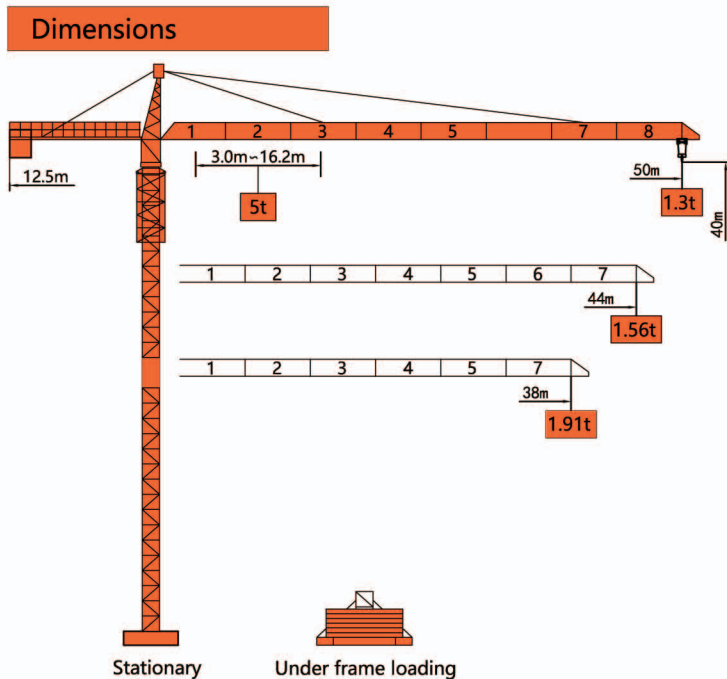


机构特性 Mechanisms

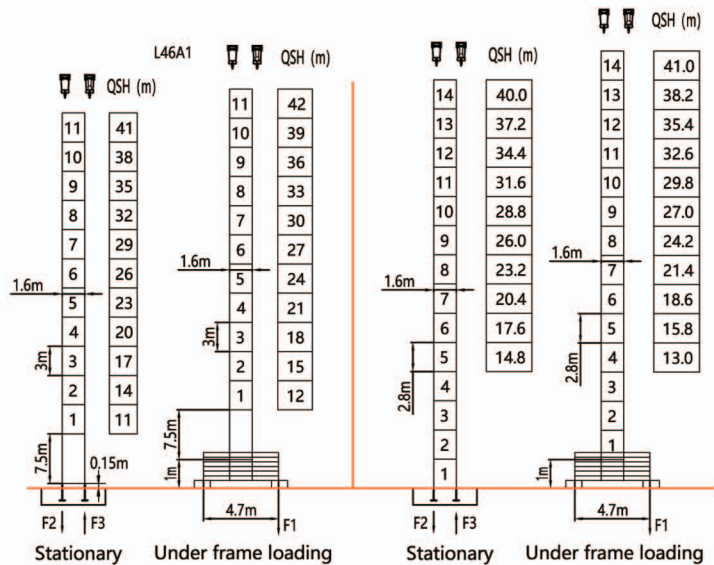
Mechanisms	Example	Model	Speed (m/min)	Hoist Weight (t)	Rope Capacity	Power	
Hoisting	☐	55JTVF30	☐	0-100	2.0	600m	55kw
			☐	0-50	6.0		
			☐	0-50	4.0		
			☐	0-25	12.0		
Trolleying	☐	BE2455X	0 ~ 58m/min			7.5kw	
Slewing	☐	HR37	0 ~ 0.82r/min			2*5.5kw	
Main Supply				~ 380V(±10%) 50Hz			
Gross Power (Excluding climbing and travelling)				73.5Kw			

平衡重 Counter-Weight

Jib Length 臂长	Balance Arm Length 平衡臂长	Counter-Weight 平衡重
70m	19m	21.5t
65m	19m	19.5t
60m	19m	17.5t
55m	19m	15.5t
50m	19m	14.0t
45m	19m	12.5t



Tower



F2	65t	69t
F3	47t	51t
⊕	29.5t	

F1	48t	60t
⊕	33t	

F2	62t	65t
F3	44t	48t
⊕	26.5t	

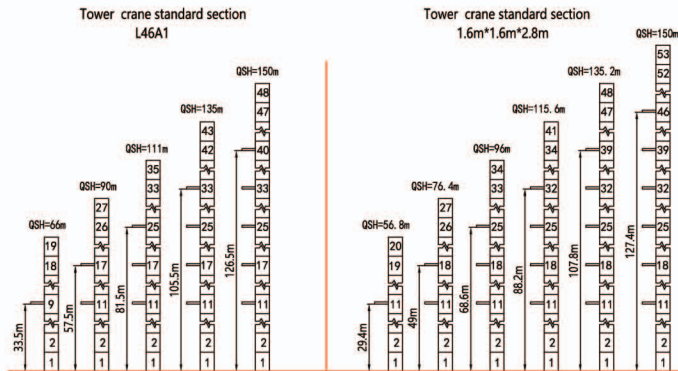
F1	47t	57t
⊕	30t	

QSH: Height of The Hook ● In Service ■ Out of Service
 ⊕ Weight with max free-standing height and max jib (without counter-weight and load)

Load Diagrams

Jib m	Max Load			Mxt														
	rope	t	m	18	20	22	24	26	28	30	32	34	36	38	44	50		
50	☞	2.5	29.9	2.50						2.49	2.31	2.15	2.00	1.87	1.55	1.30		
	☞☞	5.0	16.2	4.46	3.96	3.55	3.21	2.92	2.67	2.45	2.27	2.11	1.96	1.83	1.51	1.26		
44	☞	2.5	30.3	2.50						2.34	2.17	2.02	1.89	1.56				
	☞☞	5.0	16.5	4.54	4.03	3.62	3.27	2.98	2.72	2.58	2.30	2.13	1.98	1.85	1.52			
38	☞	2.5	30.6	2.50						2.37	2.20	2.05	1.91					
	☞☞	5.0	16.8	4.63	4.11	3.69	3.33	3.04	2.78	2.62	2.33	2.16	2.01	1.87				

Anchorage



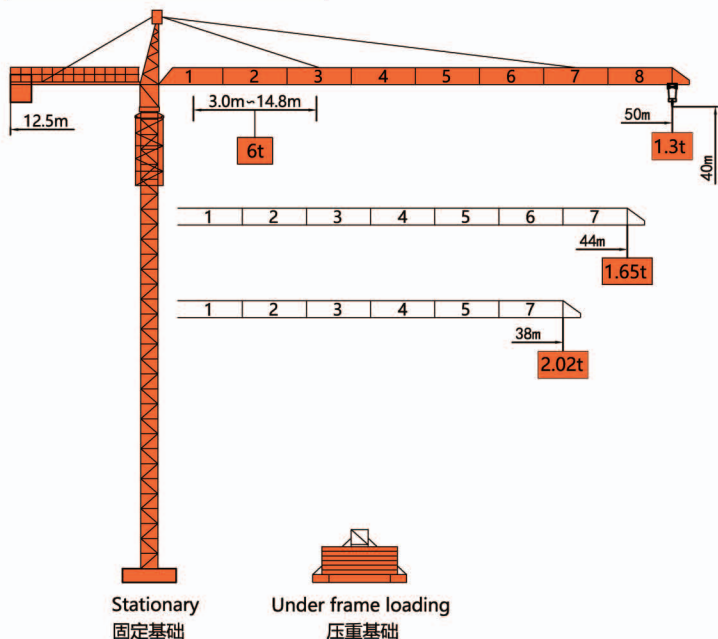
Mechanisms

Mechanisms	Example	Model	Speed (m/min)	Hoist Weight (t)	Rope Capacity	Power	
			☞	0-9			2.5
Hoisting	☺	IQ5.70B	☞	0-35	2.5	320m	18kw
			☞	0-70	1.25		
			☞	0-4.5	5.0		
			☞☞	0-17.5	5.0		
			☞☞	0-35	2.5		
Trolleying	☺	BE2455X	0 ~ 40m/min			2.4kw	
Slewing	☺	HR37	0 ~ 0.63r/min			2*3.7kw	
Main Supply				~ 380V(±10%) 50Hz			
Gross Power (Excluding climbing and travelling)				27.8Kw			

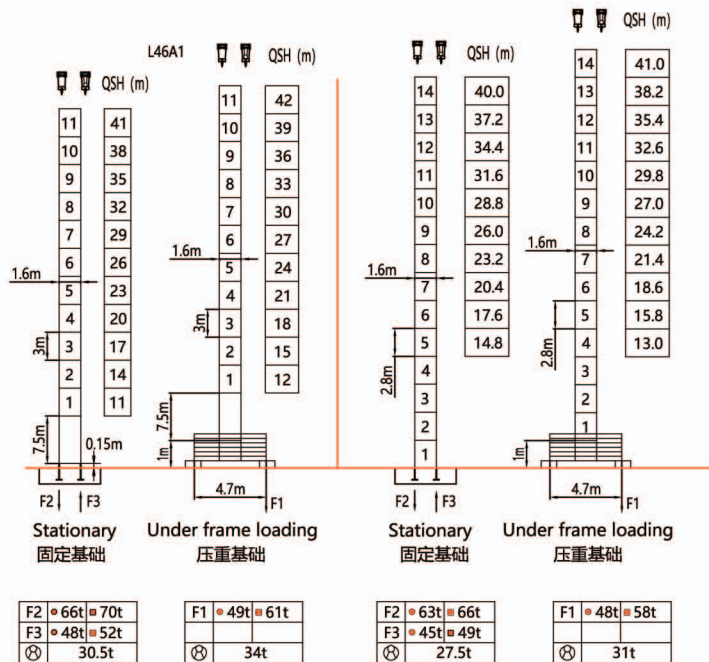
Counter-Weight

Jib Length	Balance Arm Length	Coynter-Weight
50m	12.5m	10.5t
44m	12.5m	9.3t
38m	12.5m	8.1t

外形尺寸 Dimensions



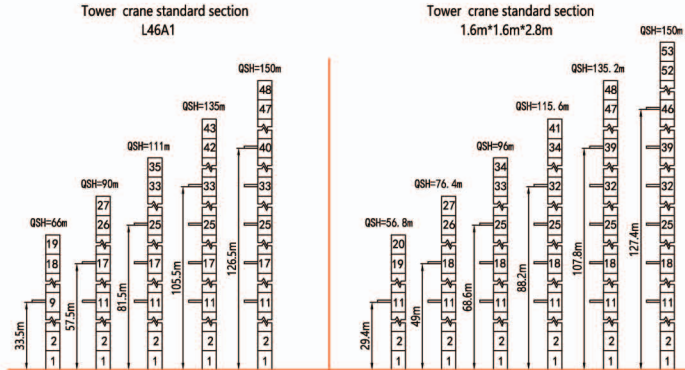
塔身 Tower



载荷特性 Load Diagrams

Jib		Max Load		Mxt														
m	rope	t	m	18	20	22	24	26	28	30	32	34	36	38	44	50		
50	☺	3.0	27.1	3.0					2.89	2.64	2.43	2.25	2.08	1.93	1.57	1.30		
	☹	6.0	14.8	4.81	4.25	3.79	3.40	3.08	2.81	2.56	2.35	2.17	2.00	1.85	1.49	1.22		
44	☺	3.0	28.0	3.0					2.75	2.53	2.34	2.18	2.02	1.65				
	☹	6.0	15.3	5.00	4.41	3.94	3.54	3.21	2.92	2.67	2.45	2.26	2.10	1.94	1.57			
38	☺	3.0	28.0	3.0					2.75	2.53	2.34	2.18	2.02					
	☹	6.0	15.3	5.00	4.41	3.94	3.54	3.21	2.92	2.67	2.45	2.26	2.10	1.94				

附着示意图 Anchorage



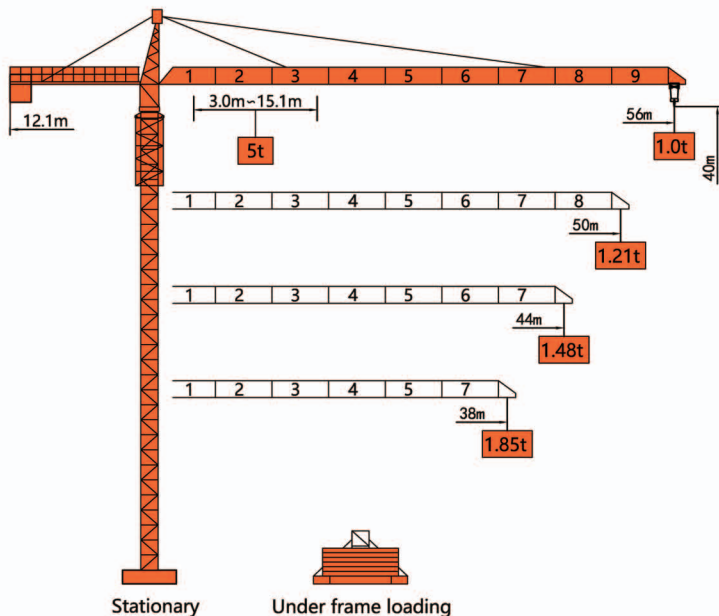
机构特性 Mechanisms

Mechanisms	Example	Model	Speed (m/min)	Hoist Weight (t)	Rope Capacity	Power	
Hoisting	▲ ● ▼	IQ6.80B	☺	0-9	3.0	410m	24kw
				0-35	3.0		
			☹	0-70	1.5		
				0-4.5	6.0		
				0-17.5	6.0		
			0-35	3.0			
Trolleying	◀▶	BE2455X	0 ~ 40m/min			3.3kw	
Slewing	⊙	HR37	0 ~ 0.63r/min			3.7kw	
Main Supply				~ 380V(±10%) 50Hz			
Gross Power (Excluding climbing and travelling)				31Kw			

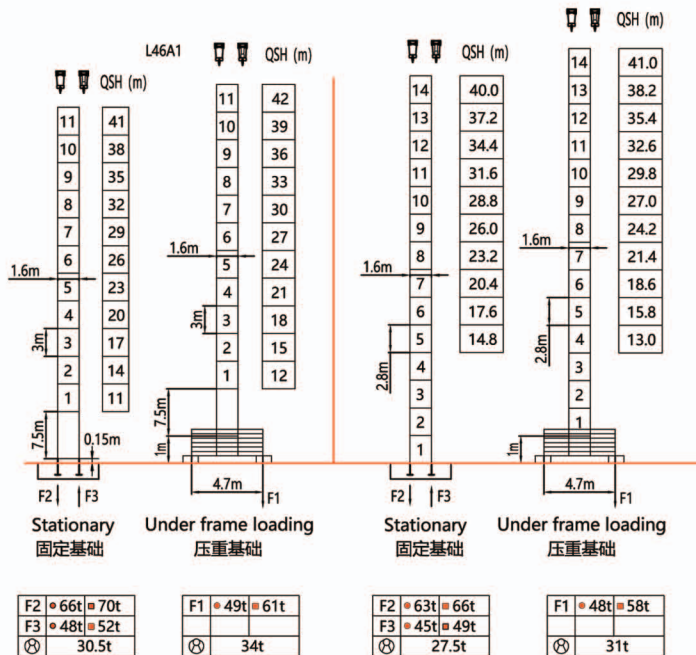
平衡重 Counter-Weight

Jib Length 臂长	Balance Arm Length 平衡臂长	Counter-Weight 平衡重
50m	12m	10.5t
44m	12m	9.3t
38m	12m	8.1t

Dimensions



塔身 Tower



F2	66t	70t
F3	48t	52t
⊗	30.5t	

F1	49t	61t
⊗	34t	

F2	63t	66t
F3	45t	49t
⊗	27.5t	

F1	48t	58t
⊗	31t	

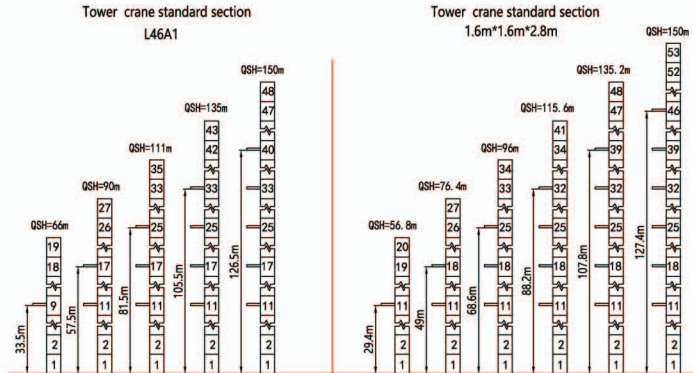
QSH: Height of The Hook • In Service (工作状态) ■ Out of Service (非工作状态)

⊗ Weight with max free-standing height and max jib (without counter-weight and load) (不含载荷及平衡重, 最大臂长及标准高度时的自重)

Load Diagrams

Jib m	rope	Max Load		Mxt													
		t	m	18	20	22	24	26	28	30	32	35	38	44	50	56	
56	☞	2.5	28.1	2.50				2.32	2.15	1.93	1.74	1.43	1.21	1.04			
	☞☞	5.0	15.1	4.17	3.70	3.32	3.00	2.73	2.49	2.28	2.11	1.89	1.70	1.39	1.17	1.00	
50	☞	2.5	28.5	2.50				2.35	2.17	1.95	1.75	1.45	1.21				
	☞☞	5.0	15.4	4.21	3.74	3.35	3.03	2.76	2.52	2.31	2.13	1.91	1.71	1.41	1.17		
44	☞	2.5	28.9	2.50				2.40	2.22	1.99	1.80	1.48					
	☞☞	5.0	15.7	4.30	3.82	3.43	3.10	2.82	2.57	2.36	2.18	1.95	1.76	1.44			
38	☞	2.5	29.3	2.50				2.48	2.29	2.06	1.85						
	☞☞	5.0	16.1	4.42	3.93	3.53	3.19	2.91	2.66	2.44	2.25	2.02	1.81				

Anchorage



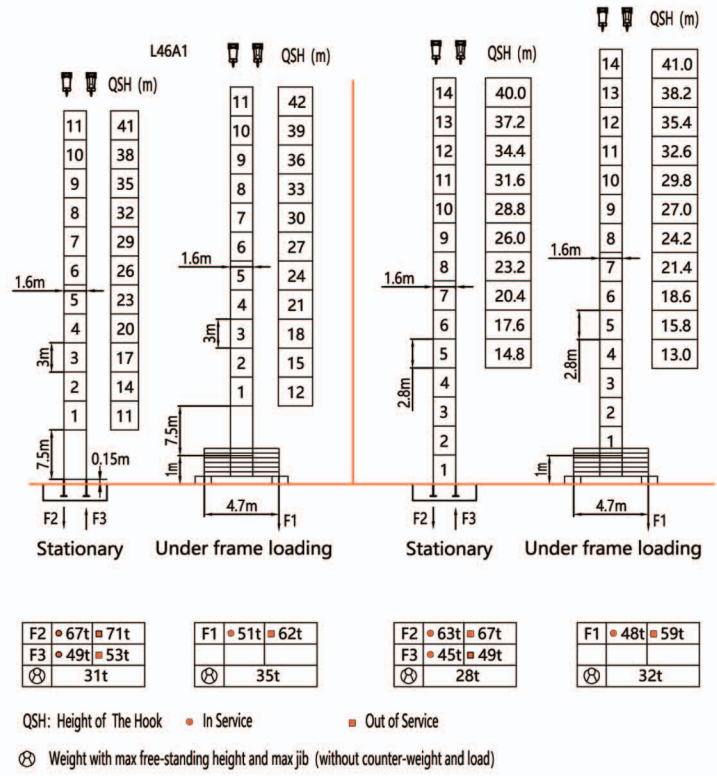
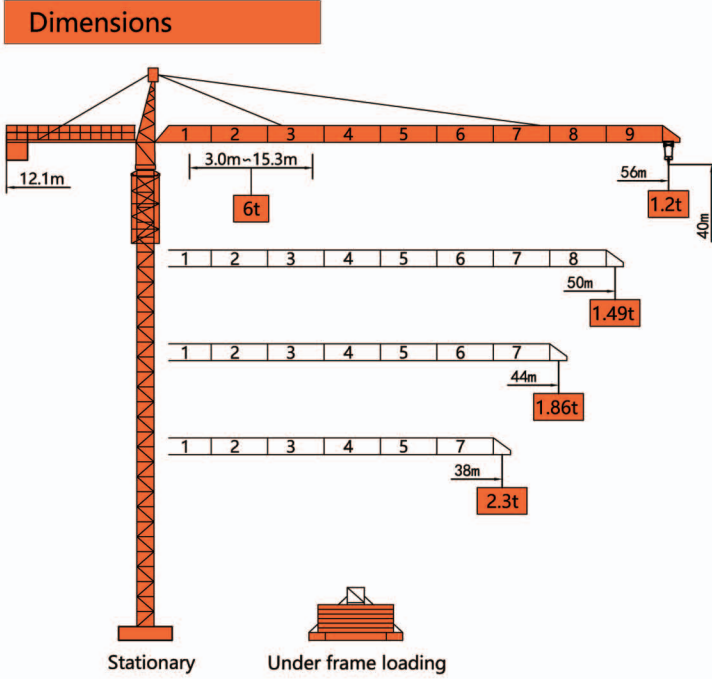
Mechanisms

Mechanisms	Example	Model	Speed (m/min)	Hoist Weight (t)	Rope Capacity	Power	
Hoisting	☞ ☞☞	IQ5.70B	☞	0-9	2.5	320m	18kw
				0-35	2.5		
				0-70	1.25		
			☞☞	0-4.5	5.0		
				0-17.5	5.0		
				0-35	2.5		
Trolleying	☞☞☞	BE2455X	0 ~ 40m/min			3.3kw	
Slewing	☞☞☞	HR37	0 ~ 0.63r/min			2*3.7kw	
Main Supply					~ 380V(±10%) 50Hz		
Gross Power (Excluding climbing and travelling)					28.7Kw		

Counter-Weight

Jib Length	Balance Arm Length	Counter-Weight
56m	12.1m	13.5t
50m	12.1m	11.95t
44m	12.1m	10.4t
38m	12.1m	8.85t

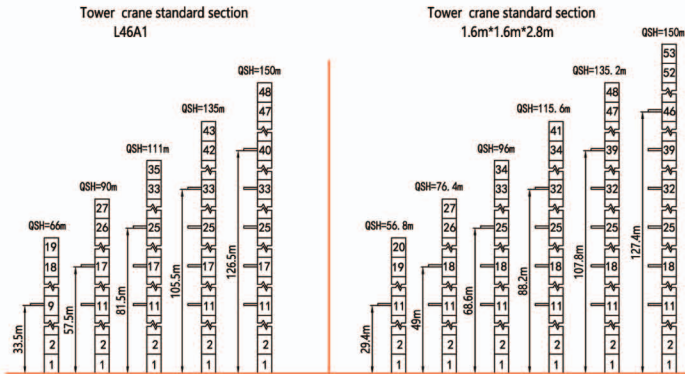
Tower



Load Diagrams

Jib m	rope	Max Load															
		t	m	18	20	22	24	26	28	30	32	35	38	44	50	56	
56	☞	3.0	28.3	3.0						2.80	2.59	2.31	2.08	1.70	1.42	1.20	
	☞☞	6.0	15.3	5.00	4.43	3.96	3.57	3.23	2.95	2.70	2.49	2.21	1.98	1.60	1.32	1.10	
50	☞	3.0	29.3	3.0						2.93	2.70	2.42	2.17	1.79	1.49		
	☞☞	6.0	15.9	5.21	4.62	4.13	3.72	3.38	3.08	2.83	2.60	2.32	2.07	1.69	1.39		
44	☞	3.0	30.1	3.0						2.81	2.51	2.26	1.86				
	☞☞	6.0	16.4	5.40	4.79	4.28	3.86	3.51	3.20	2.94	2.71	2.41	2.16	1.76			
38	☞	3.0	30.8	3.0						2.86	2.56	2.30					
	☞☞	6.0	16.8	5.55	4.92	4.40	3.98	3.61	3.30	3.02	2.76	2.46	2.20				

Anchorage

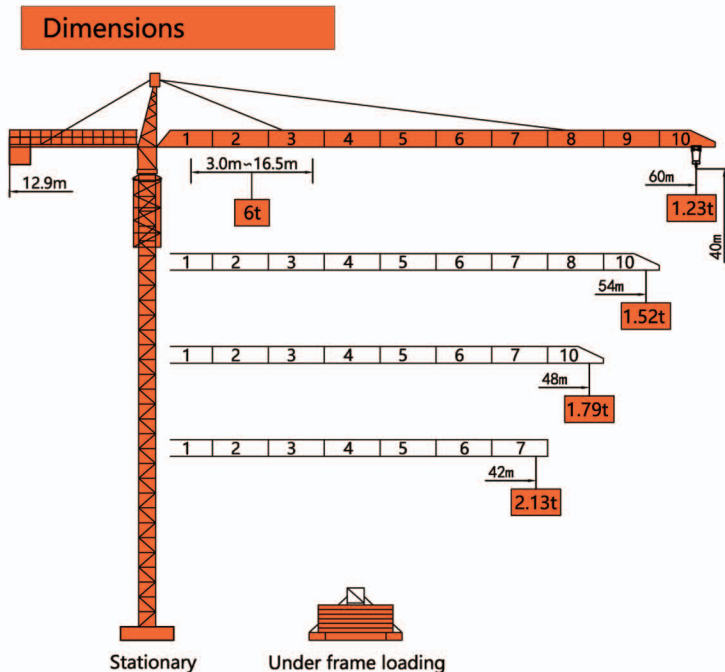


Mechanisms

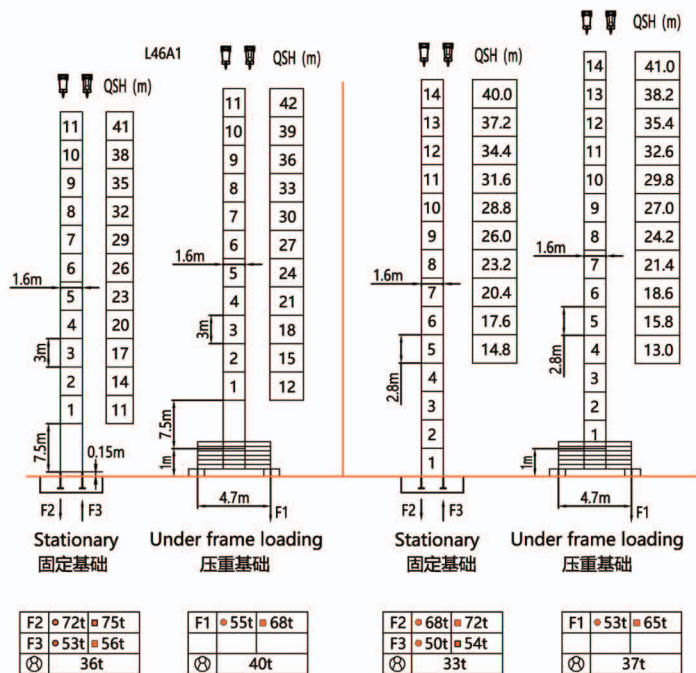
Mechanisms	Example	Model	Speed (m/min)	Hoist Weight (t)	Rope Capacity	Power
Hoisting	☞ ☞☞	IQ6.80B	0-9	2.5	410m	24kw
			0-35	2.5		
			0-70	1.25		
			0-4.5	5.0		
			0-17.5	5.0		
			0-35	2.5		
Trolleying	☞☞	BE2455X	0~40m/min			3.3kw
Slewing	☞	HR37	0~0.63r/min			2*3.7kw
Main Supply				~ 380V(±10%) 50Hz		
Gross Power (Excluding climbing and travelling)				34.7Kw		

Counter-Weight

Jib Length	Balance Arm Length	Coynter-Weight
56m	12.1m	13.5t
50m	12.1m	11.95t
44m	12.1m	10.4t
38m	12.1m	8.85t



Tower



QSH: Height of The Hook ● In Service ■ Out of Service
 ⊗ Weight with max free-standing height and max jib (without counter-weight and load)

Load Diagrams

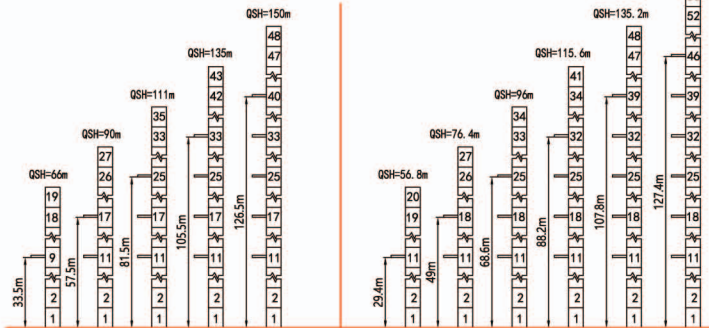
Jib m	rope	Max Load t	Mxt																	
			m	18	20	22	24	26	28	30	32	35	42	48	54	60				
60	☞	3.0	30.5	3.0											2.83	2.54	2.01	1.69	1.43	1.23
	☞☞	6.0	16.5	5.47	4.86	4.36	3.95	3.60	3.29	3.05	2.80	2.51	1.98	1.66	1.40	1.20				
54	☞	3.0	31.8	3.0											2.98	2.67	2.13	1.79	1.52	
	☞☞	6.0	17.3	5.75	5.10	4.58	4.15	3.78	3.47	3.19	2.95	2.64	2.10	1.76	1.49					
48	☞	3.0	31.8	3.0											2.98	2.67	2.13	1.79		
	☞☞	6.0	17.3	5.75	5.10	4.58	4.15	3.78	3.47	3.19	2.95	2.64	2.10	1.76						
42	☞	3.0	31.8	3.0											2.98	2.67	2.13			
	☞☞	6.0	17.3	5.75	5.10	4.58	4.15	3.78	3.47	3.19	2.95	2.64	2.10							

Anchorage

Tower crane standard section L46A1

Tower crane standard section 1.6m*1.6m*2.8m

QSH=150m



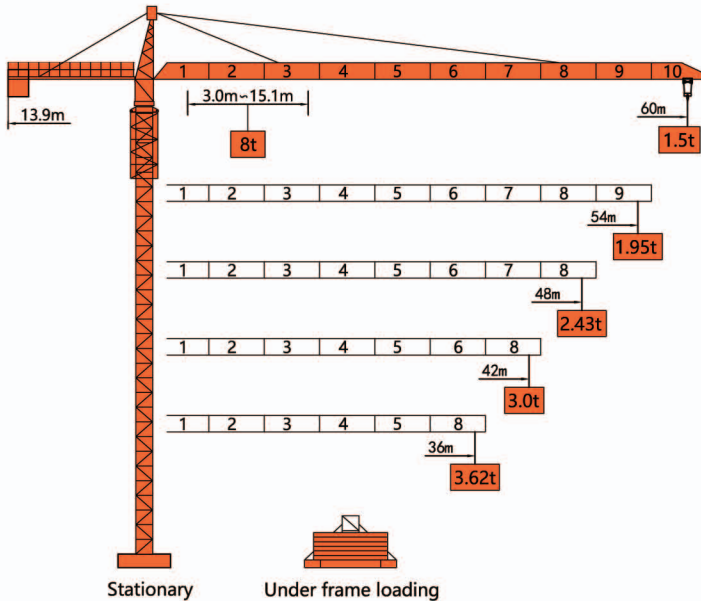
Mechanisms

Mechanisms	Example	Model	Speed (m/min)	Hoist Weight (t)	Rope Capacity	Power
Hoisting	☞ ☞	IQ6.80B	0-9	2.5	410m	24kw
			0-35	2.5		
			0-70	1.25		
			0-4.5	5.0		
			0-17.5	5.0		
			0-35	2.5		
Trolleying	☞☞	BE2455X	0 ~ 40m/min			3.3kw
Slewing	☞	HR37	0 ~ 0.63r/min			2*3.7kw
Main Supply				~ 380V(±10%) 50Hz		
Gross Power (Excluding climbing and travelling)				34.7Kw		

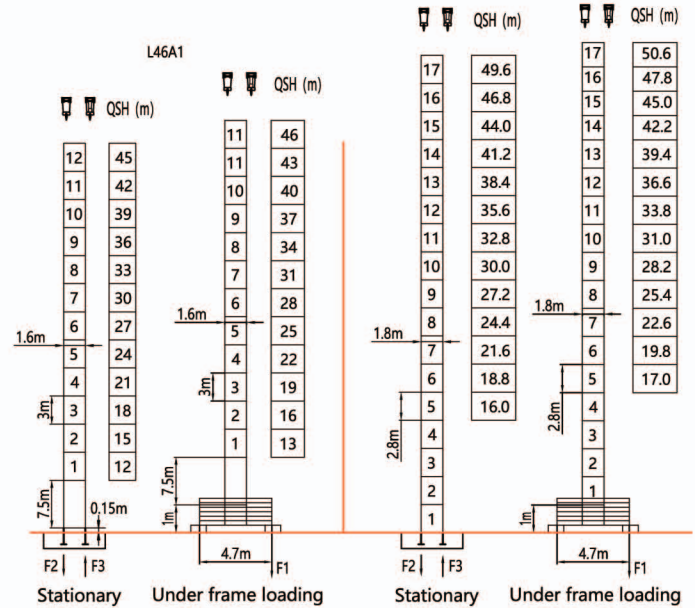
Counter-Weight

Jib Length	Balance Arm Length	Counter-Weight
60m	12.9m	14.5t
54m	12.9m	12.8t
48m	12.9m	11.1t
42m	12.9m	9.4t

Dimensions



Tower



F2	98t	116t
F3	65t	90t
⊗	39t	

F1	64t	83t
⊗	43t	

F2	100t	107t
F3	67t	93t
⊗	43t	

F1	68t	87t
⊗	48t	

QSH: Height of The Hook ● In Service ■ Out of Service

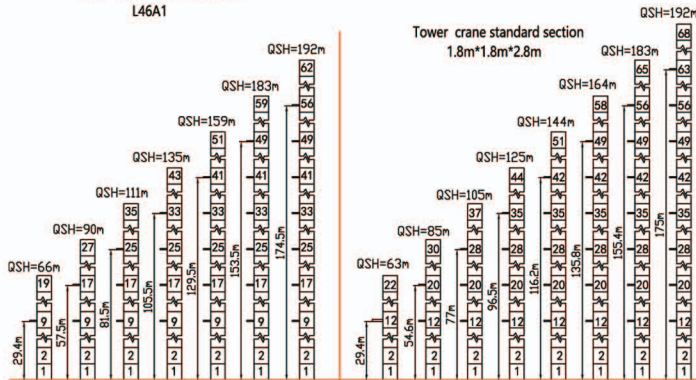
⊗ Weight with max free-standing height and max jib (without counter-weight and load)

Load Diagrams

Jib	Max Load	Mxt																	
		m	rope	t	m	18	20	22	24	26	30	32	34	36	42	48	54	60	
60		4.0	28.2	4.0								3.71	3.43	3.19	2.97	2.45	2.05	1.75	1.50
		8.0	15.1	6.55	5.82	5.22	4.71	4.28	3.60	3.32	3.08	2.86	2.34	1.94	1.64	1.39			
54		4.0	30.5	4.0								3.78	3.51	3.28	2.71	2.28	1.95		
		8.0	16.3	7.16	6.37	5.71	5.16	4.70	3.98	3.67	3.40	3.17	2.60	2.17	1.84				
48		4.0	31.9	4.0								3.90	3.72	3.47	2.87	2.43			
		8.0	17.1	7.55	6.72	6.04	5.45	4.97	4.20	3.89	3.61	3.36	2.76	2.32					
42		4.0	33.1	4.0								3.87	3.62	3.00					
		8.0	17.7	7.83	6.97	6.26	5.67	5.17	4.37	4.05	3.76	3.51	2.89						
36		4.0	33.1	4.0								3.87	3.62						
		8.0	17.7	7.83	6.97	6.26	5.67	5.17	4.37	4.05	3.76	3.51							

Anchorage

Tower crane standard section



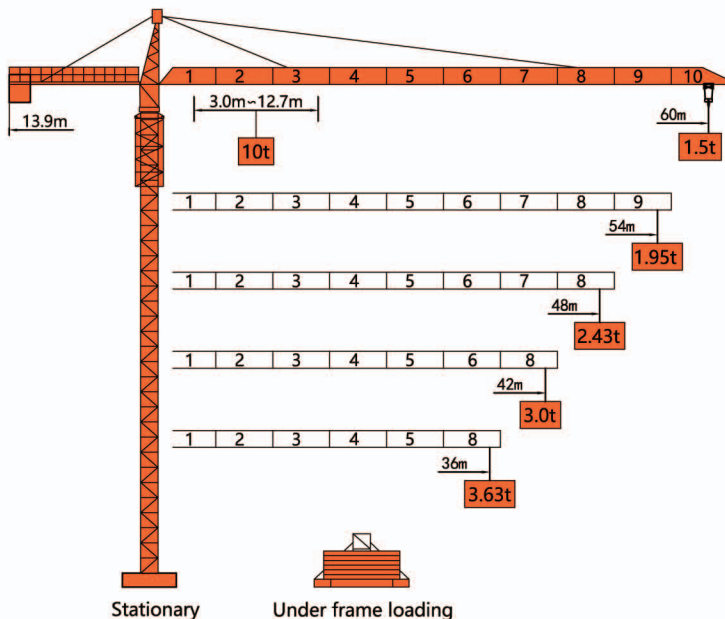
Mechanisms

Mechanisms	Example	Model	Speed (m/min)	Hoist Weight (t)	Rope Capacity	Power	
Hoisting		IQ8.80P		0-76	1.4	420m	30kw
				0-38	4.0		
				0-76	2.8		
				0-38	8.0		
Trolleying		BE2455X	0 ~ 40m/min			4.0kw	
Slewing		HR37	0 ~ 0.63r/min			2*4.0kw	
Main Supply				~ 380V(±10%) 50Hz			
Gross Power (Excluding climbing and travelling)				42Kw			

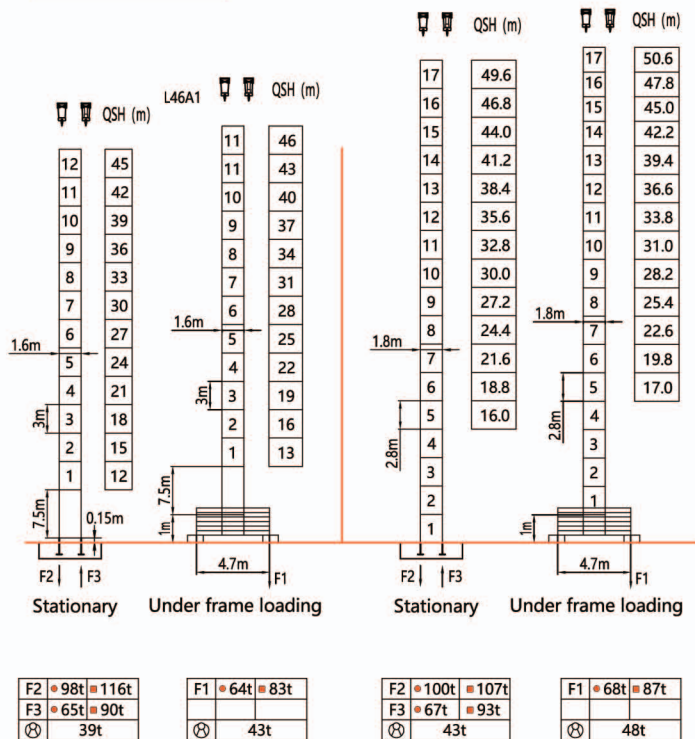
Counter-Weight

Jib Length	Balance Arm Length	Coounter-Weight
60m	13.9m	14.8t
54m	13.9m	13.4t
48m	13.9m	12.0t
42m	13.9m	10.6t
36m	13.9m	9.2t

Dimensions



Tower



QSH: Height of The Hook • In Service ■ Out of Service

⊗ Weight with max free-standing height and max jib (without counter-weight and load)

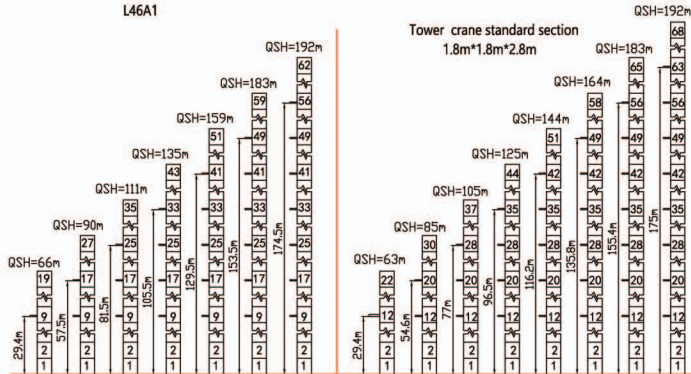
Load Diagrams

Jib m	Max Load rope t	Mxt													
		t	m	15	18	20	23	25	30	32	34	36	42	48	54
60	5.0	23.8	5.0				4.72	3.80	3.51	3.26	3.03	2.48	2.08	1.76	1.50
	10.0	12.7	8.32	6.79	6.02	5.12	4.64	3.72	3.43	3.18	2.95	2.40	2.00	1.68	1.42
54	5.0	25.6	5.0				4.15	3.84	3.57	3.32	2.73	2.29	1.95		
	10.0	13.6	9.02	7.37	6.55	5.58	5.06	4.07	3.76	3.49	3.24	2.65	2.21	1.87	
48	5.0	26.7	5.0				4.37	4.05	3.76	3.51	2.89	2.43			
	10.0	14.2	9.46	7.73	6.87	5.86	5.32	4.29	3.97	3.68	3.43	2.81	2.35		
42	5.0	27.5	5.0				4.52	4.18	3.89	3.63	3.00				
	10.0	14.7	9.76	7.98	7.10	6.06	5.50	4.44	4.10	3.81	3.55	2.92			
36	5.0	27.5	5.0				4.52	4.18	3.89	3.63					
	10.0	14.7	9.76	7.98	7.10	6.06	5.50	4.44	4.10	3.81	3.55				

Anchorage

Tower crane standard section

L46A1

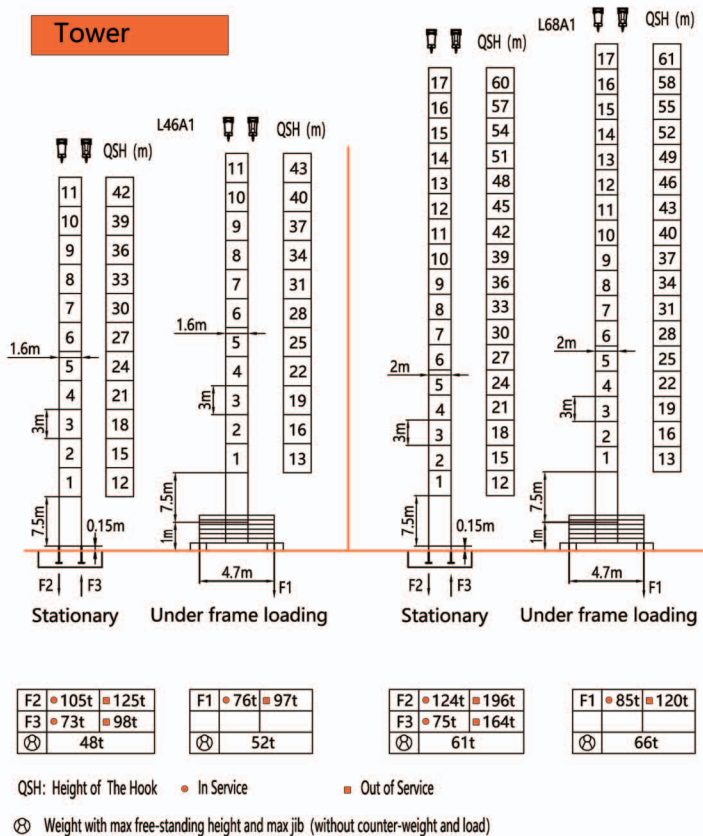
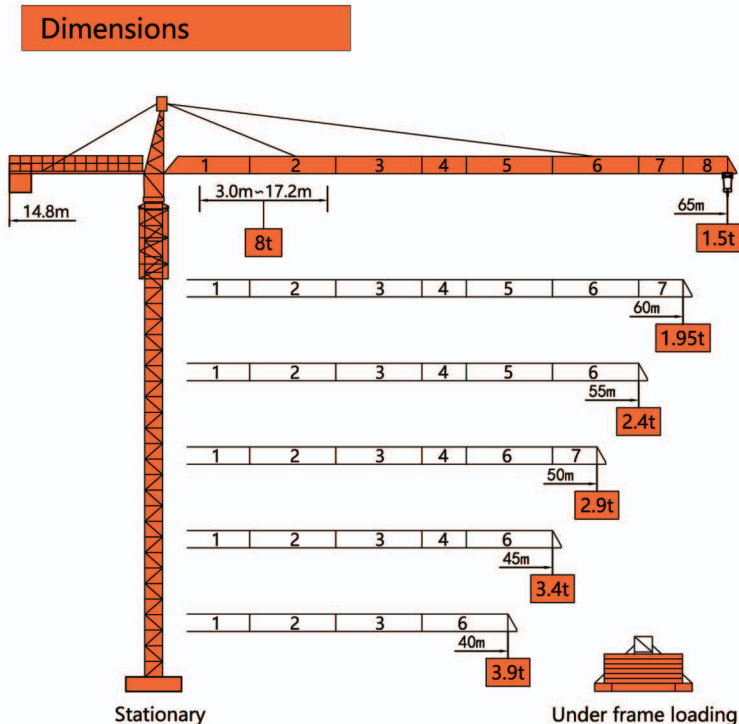


Mechanisms

Mechanisms	Example	Model	Speed (m/min)	Hoist Weight (t)	Rope Capacity	Power
Hoisting	▲ ● ▼	IQ8.80P	0-76	1.4	420m	37kw
			0-38	4.0		
			0-76	2.8		
			0-38	8.0		
Trolleying	◀▶	BE2455X	0~40m/min			4.0kw
Slewing	⊙	HR37	0~0.63r/min			2*4.0kw
Main Supply				~ 380V(±10%) 50Hz		
Gross Power (Excluding climbing and travelling)				49Kw		

Counter-Weight

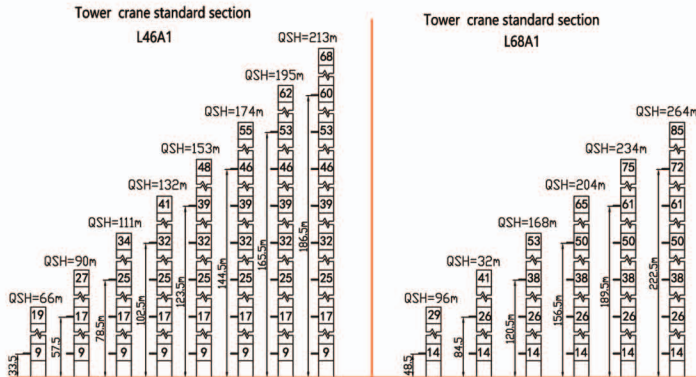
Jib Length	Balance Arm Length	Coounter-Weight
60m	13.9m	14.8t
54m	13.9m	13.4t
48m	13.9m	12.0t
42m	13.9m	10.6t
36m	13.9m	9.2t



Load Diagrams

Jib		Max Load		Mxt												
m	rope	t	m	20	22	24	26	28	30	35	40	45	50	55	60	65
65	[rope icon]	4.0	31.9	4.0						3.58	3.03	2.60	2.26	1.98	1.75	1.55
		8.0	17.2	6.78	6.08	5.50	5.01	4.59	4.22	3.50	2.95	2.52	2.18	1.90	1.67	1.47
60	[rope icon]	4.0	34.3	4.0						3.91	3.33	2.87	2.50	2.20	1.95	
		8.0	18.5	7.37	6.62	6.00	5.47	5.02	4.62	3.83	3.25	2.79	2.42	2.12	1.87	
55	[rope icon]	4.0	36.7	4.0						3.60	3.11	2.72	2.40			
		8.0	19.8	7.92	7.12	6.45	5.89	5.41	4.99	4.15	3.52	3.03	2.64	2.32		
50	[rope icon]	4.0	38.5	4.0						3.83	3.31	2.90				
		8.0	20.8	8.00	7.53	6.83	6.23	5.73	5.29	4.40	3.75	3.23	2.82			
45	[rope icon]	4.0	39.3	4.0						3.93	3.40					
		8.0	21.3	8.00	7.71	6.99	6.39	5.87	5.42	4.52	3.85	3.32				
40	[rope icon]	4.0	39.1	4.0						3.90						
		8.0	21.2	8.00	7.66	6.95	6.35	5.83	5.39	4.49	3.82					

Anchorage



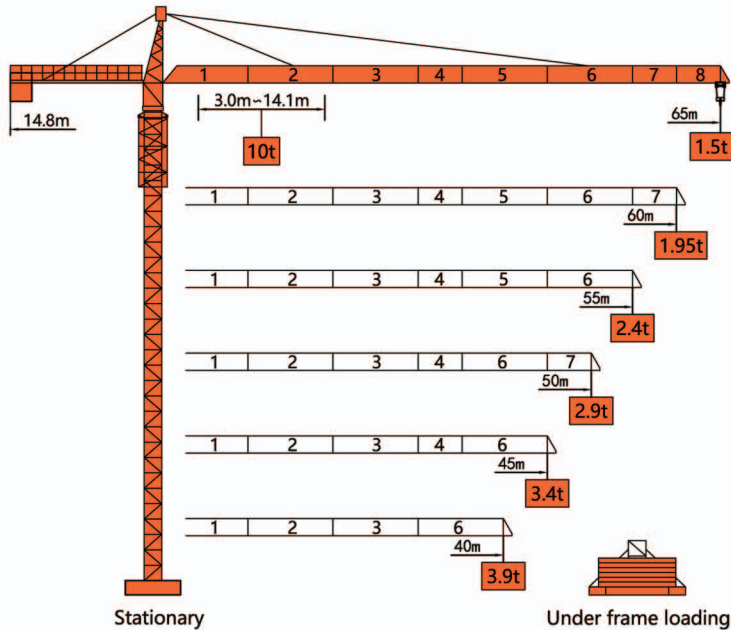
Mechanisms

Mechanisms	Example	Model	Speed (m/min)	Hoist Weight (t)	Rope Capacity	Power
Hoisting	[hoist icon]	IQ8.80P	[rope icon] 0-76	1.4	420m	30kw
			[rope icon] 0-38	4.0		
			[rope icon] 0-76	2.8		
			[rope icon] 0-38	8.0		
Trolleying	[trolley icon]	BE2455X	0 ~ 58m/min		4.0kw	
Slewing	[slew icon]	HR37	0 ~ 0.82r/min		2*5.5kw	
Main Supply				~ 380V(±10%) 50Hz		
Gross Power (Excluding climbing and travelling)				45Kw		

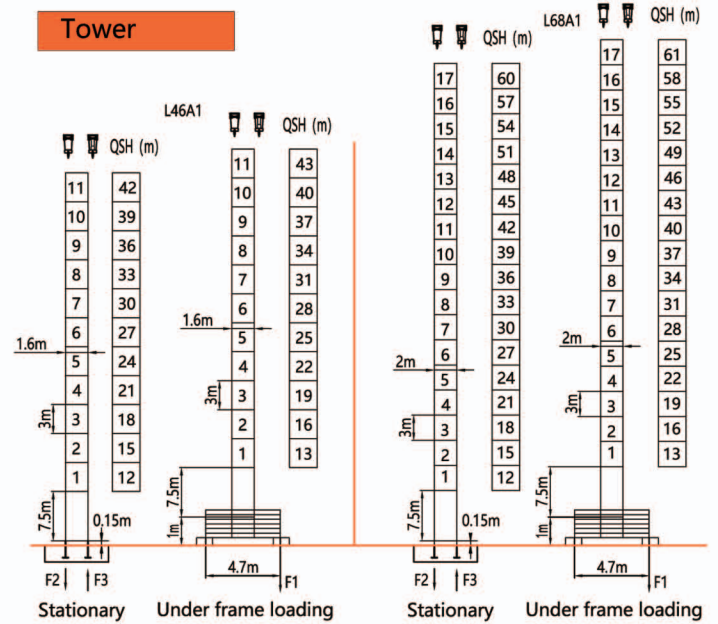
Counter-Weight

Jib Length	Balance Arm Length	Coynter-Weight
65m	14.8m	19.3t
60m	14.8m	17.6t
55m	14.8m	15.9t
50m	14.8m	14.2t
45m	14.8m	12.5t
40m	14.8m	10.8t

Dimensions



Tower



F2	106t	126t
F3	74t	99t
⊗	49t	

F1	77t	98t
⊗	53t	

F2	125t	197t
F3	76t	165t
⊗	58t	

F1	86t	121t
⊗	63t	

QSH: Height of The Hook ● In Service ■ Out of Service

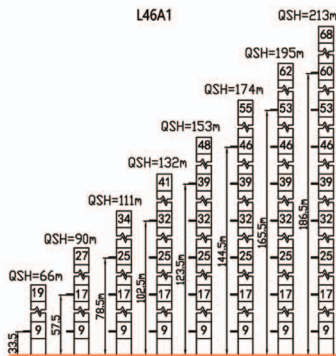
⊗ Weight with max free-standing height and max jib (without counter-weight and load)

Load Diagrams

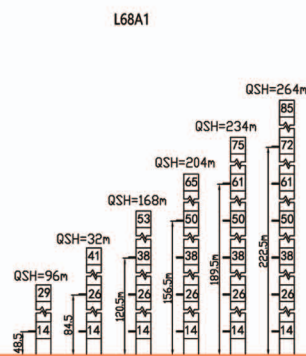
m	Jib rope	Max Load t	Mxt														
			20	22	24	26	28	30	35	40	45	50	55	60	65		
65	☐	5.0	26.4	5.0					4.67	4.30	3.58	3.03	2.60	2.26	1.98	1.75	1.55
	☐	10.0	14.1	6.78	6.08	5.50	5.01	4.59	4.22	3.50	2.95	2.52	2.18	1.90	1.67	1.47	
60	☐	5.0	28.4	5.0					4.70	3.91	3.33	2.87	2.50	2.20	1.95		
	☐	10.0	15.1	7.37	6.62	6.00	5.47	5.02	4.62	3.83	3.25	2.79	2.42	2.12	1.87		
55	☐	5.0	30.3	5.0					4.23	3.60	3.11	2.72	2.40				
	☐	10.0	16.2	7.92	7.12	6.45	5.89	5.41	4.99	4.15	3.52	3.03	2.64	2.32			
50	☐	5.0	31.9	5.0					4.48	3.83	3.31	2.90					
	☐	10.0	17.0	8.37	7.53	6.83	6.23	5.73	5.29	4.40	3.75	3.23	2.82				
45	☐	5.0	32.6	5.0					4.60	3.93	3.40						
	☐	10.0	17.4	8.57	7.71	6.99	6.39	5.87	5.42	4.52	3.85	3.32					
40	☐	5.0	32.4	5.0					4.57	3.90							
	☐	10.0	17.3	8.52	7.66	6.95	6.35	5.83	5.39	4.49	3.82						

Anchorage

Tower crane standard section

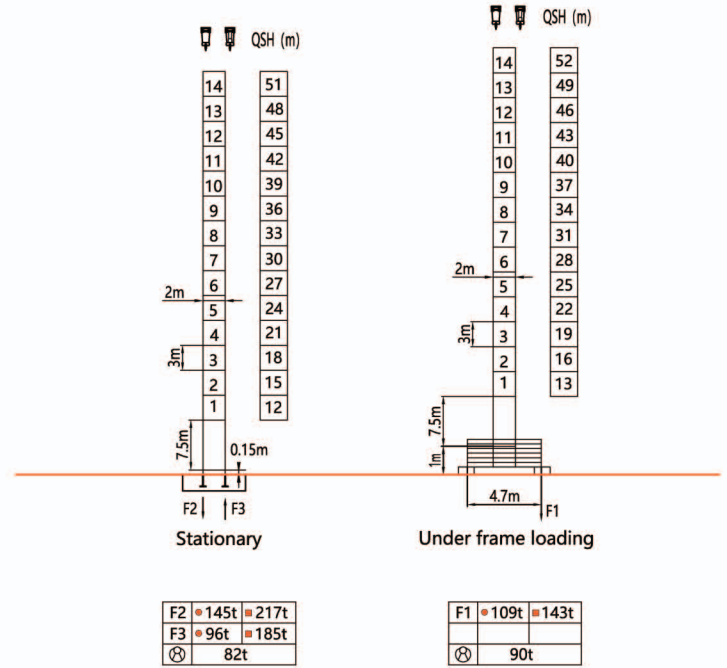
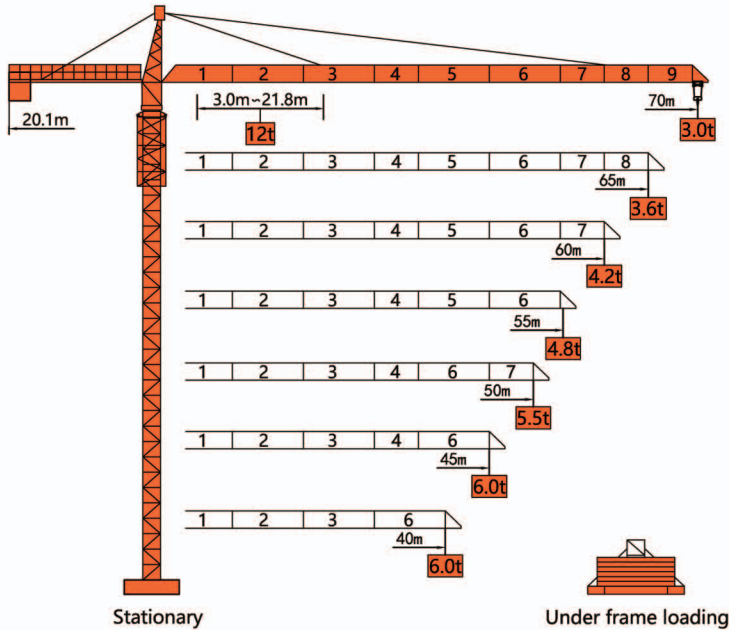


Tower crane standard section



Tower

Dimensions



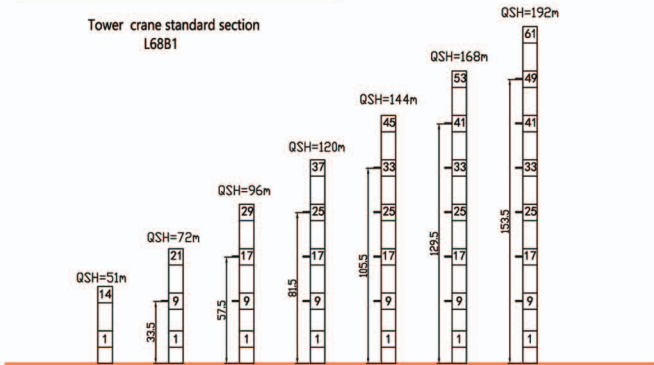
QSH: Height of The Hook • In Service ■ Out of Service

⊕ Weight with max free-standing height and max jib (without counter-weight and load)

Load Diagrams

Jib m	Max Load		Mxt													
	rope	t	m	23	25	30	32	35	38	40	45	50	55	60	65	70
70	6.0	40.5									5.29	4.65	4.12	3.69	3.31	3.00
	12.0	21.8	11.22	10.22	8.29	7.69	6.92	6.27	5.89	5.09	4.45	3.92	3.49	3.11	2.80	
65	6.0	43.1				6.0					5.70	5.02	4.46	3.99	3.60	
	12.0	23.2	12.0	10.9	8.90	8.27	7.45	6.75	6.35	5.50	4.82	4.26	3.79	3.40		
60	6.0	44.8				6.0					5.97	5.26	4.68	4.20		
	12.0	24.1	12.0	11.45	9.32	8.66	7.80	7.08	6.66	5.77	5.06	4.48	4.00			
55	6.0	45.7				6.0					5.39	4.80				
	12.0	24.6	12.0	11.7	9.53	8.86	7.98	7.25	6.82	5.92	5.19	4.60				
50	6.0	46.5				6.0					5.50					
	12.0	24.8	12.0	11.9	9.71	9.02	8.14	7.39	6.96	6.03	5.30					
45	6.0	45.0				6.0					6.00					
	12.0	24.2	12.0	11.5	9.36	8.69	7.83	7.11	6.69	5.80						
40	6.0	45.0				6.0										
	12.0	24.2	12.0	11.5	9.36	8.69	7.83	7.11	6.69							

Anchorage



Mechanisms

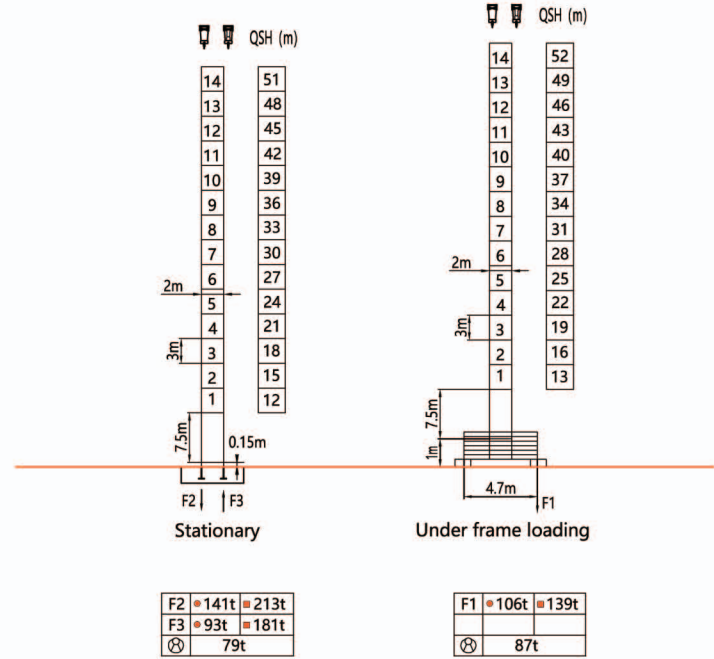
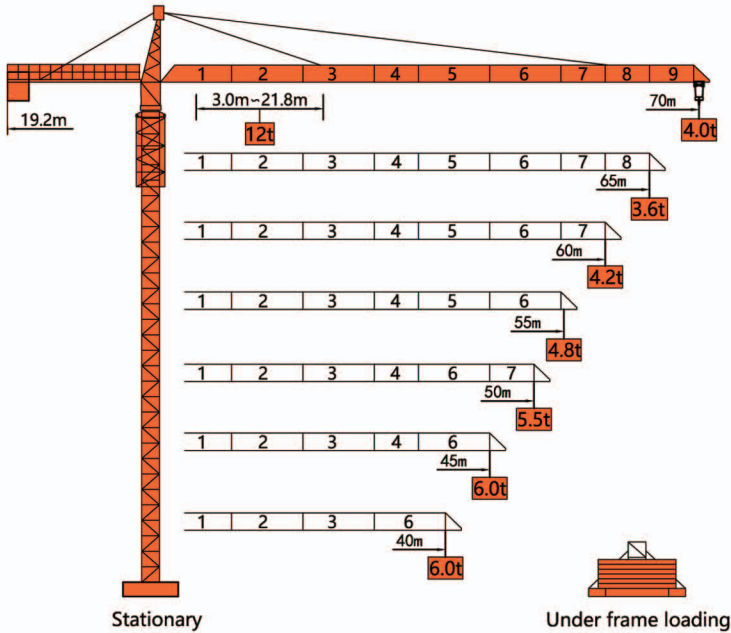
Mechanisms	Example	Model	Speed (m/min)	Hoist Weight (t)	Rope Capacity	Power
Hoisting	▲ ● ▼	55JTVF30	0-100	2.0	600m	55kw
			0-50	6.0		
			0-50	4.0		
			0-25	12.0		
Trolleying	◀▶	BE2455X	0 ~ 58m/min			7.5kw
Slewing	⊙	HR37	0 ~ 0.82r/min			2*5.5kw
Main Supply				~ 380V(±10%) 50Hz		
Gross Power (Excluding climbing and travelling)				73.5Kw		

Counter-Weight

Jib Length	Balance Arm Length	Coynter-Weight
70m	19m	25.9t
65m	19m	23.7t
60m	19m	21.5t
55m	19m	19.3t
50m	19m	17.1t
45m	19m	14.9t

Tower

Dimensions



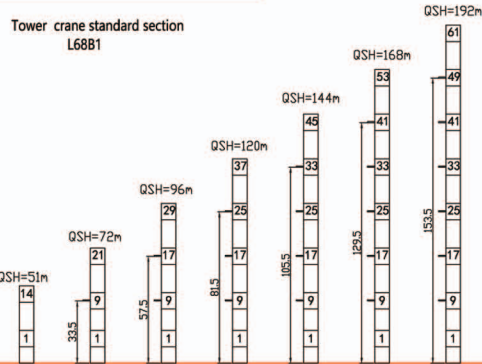
QSH: Height of The Hook • In Service ■ Out of Service

⊕ Weight with max free-standing height and max jib (without counter-weight and load)

Load Diagrams

Jib		Max Load															
m	rope	t	m	23	25	30	32	35	38	40	45	50	55	60	65	70	
70	☐	8.0	38.9	8.0							7.74	6.78	6.00	5.38	4.85	4.41	4.00
	☐	16.0	20.0	13.7	12.5	10.2	9.47	8.53	7.74	7.27	6.31	5.53	4.91	4.38	3.94	3.53	
65	☐	8.0	40.4	8.0							7.09	6.81	5.62	5.07	4.60		
	☐	16.0	20.8	14.4	13.1	10.7	9.91	8.93	8.11	7.63	6.62	6.34	5.15	4.60	4.13		
60	☐	8.0	41.3	8.0							7.27	6.44	5.76	5.20			
	☐	16.0	21.3	14.7	13.4	10.9	10.2	9.16	8.32	7.83	6.80	5.97	5.29	4.73			
55	☐	8.0	42.2	8.0							7.43	6.59	5.90				
	☐	16.0	21.7	15.0	13.7	11.2	10.4	9.37	8.52	8.02	6.96	6.12	5.43				
50	☐	8.0	42.8	8.0							7.56	6.70					
	☐	16.0	22.0	15.3	13.9	11.4	10.6	9.53	8.66	8.16	7.09	6.23					
45	☐	8.0	41.5	8.0							7.30						
	☐	16.0	21.4	14.8	13.5	11.0	10.2	9.20	8.36	7.87	6.83						
40	☐	8.0	41.5	8.0													
	☐	16.0	21.4	14.8	13.5	11.0	10.2	9.20	8.36	7.87							

Anchorage



Mechanisms

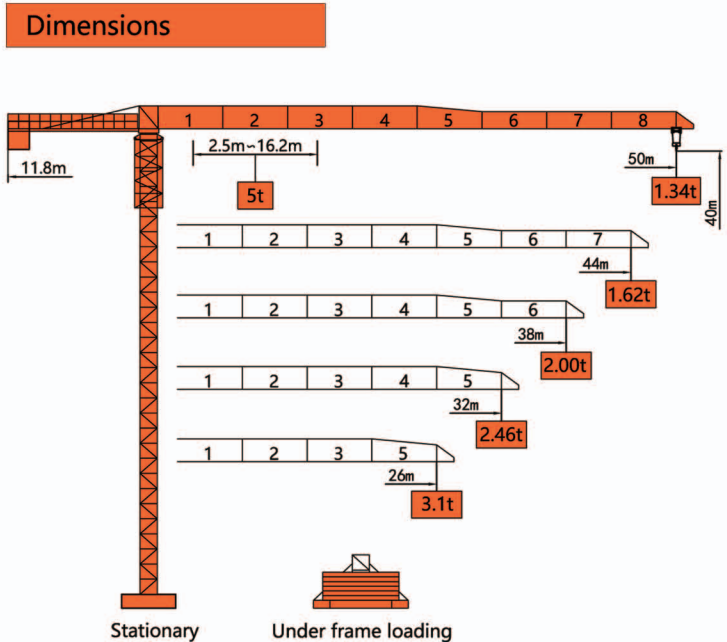
Mechanisms	Example	Model	Speed (m/min)	Hoist Weight (t)	Rope Capacity	Power	
Hoisting	☐	55JTVF30	☐	0-100	3.0	520m	55kw
			☐	0-50	8.0		
			☐	0-50	6.0		
			☐	0-25	16.0		
Trolleying	☐	BE2455X	0 ~ 60m/min			7.5kw	
Slewing	☐	HR37	0 ~ 0.80r/min			2*9.0kw	
Main Supply				~ 380V(±10%) 50Hz			
Gross Power (Excluding climbing and travelling)				80.5Kw			

Counter-Weight

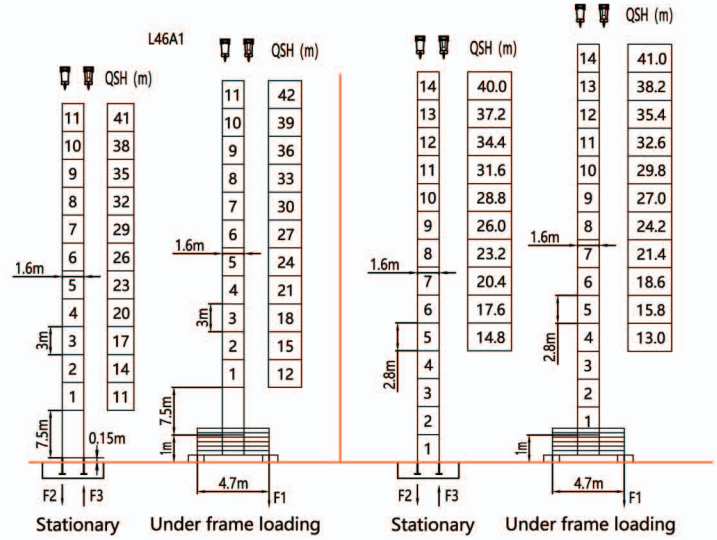
Jib Length	Balance Arm Length	Counter-Weight
70m	19m	25.9t
65m	19m	23.7t
60m	19m	21.5t
55m	19m	19.3t
50m	19m	17.1t
45m	19m	14.9t

SUNTEC

平头式塔式起重机系列



Tower



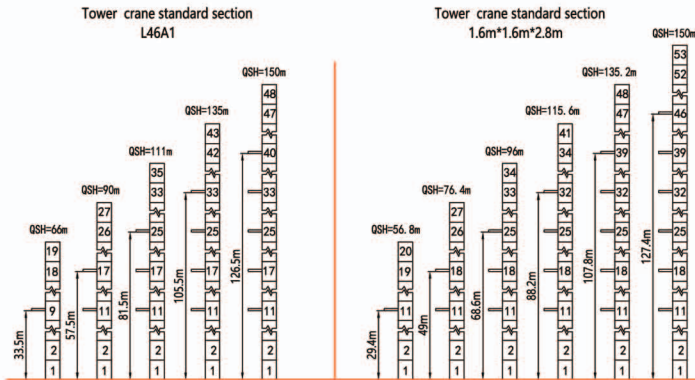
F2	68t	72t	F1	52t	63t	F2	65t	69t	F1	50t	61t
F3	50t	54t				F3	47t	51t			
⊗	32t		⊗	37t		⊗	29t		⊗	34t	

QSH: Height of The Hook ● In Service ■ Out of Service
 ⊗ Weight with max free-standing height and max jib (without counter-weight and load)

Load Diagrams

Jib		Max Load		Mxt													
m	rope	t	m	18	19	20	21	22	23	24	25	26	32	38	44	50	
50	☞	2.5	29.5	2.50										2.34	1.90	1.58	1.34
	☞☞	5.0	16.2	4.45	4.20	3.96	3.75	3.56	3.38	3.22	3.07	2.94	2.30	1.86	1.54	1.30	
44	☞	2.5	30.2	2.50										2.40	1.95	1.62	
	☞☞	5.0	16.6	4.57	4.30	4.06	3.85	3.65	3.47	3.30	3.15	3.01	2.36	1.91	1.58		
38	☞	2.5	30.9	2.50										2.46	2.00		
	☞☞	5.0	16.9	4.68	4.40	4.16	3.94	3.74	3.56	3.39	3.23	3.10	2.42	1.96			
32	☞	2.5	30.9	2.50													
	☞☞	5.0	16.9	4.68	4.40	4.16	3.94	3.74	3.56	3.39	3.23	3.10	2.42				
26	☞	2.5	30.9	2.50													
	☞☞	5.0	16.9	4.68	4.40	4.16	3.94	3.74	3.56	3.39	3.23	3.10					

Anchorage



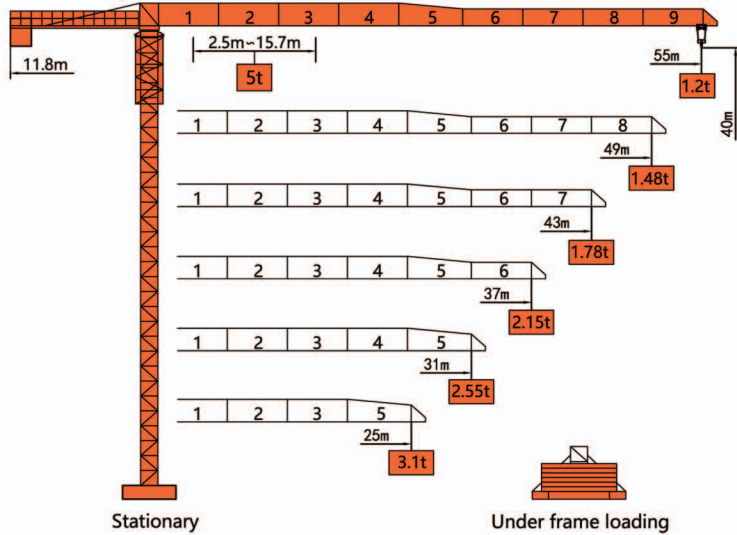
Mechanisms

Mechanisms	Example	Model	Speed (m/min)	Hoist Weight (t)	Rope Capacity	Power	
Hoisting	☞ ☞☞	IQ5.70B	0-9	2.5	320m	18kw	
			0-35	2.5			
			0-70	1.25			
			☞☞	0-4.5			5.0
			0-17.5	5.0			
			0-35	2.5			
Trolleying	☞☞☞	BE2455X	0 ~ 40m/min			2.4kw	
Slewing	☞☞☞	HR37	0 ~ 0.63r/min			2*3.7kw	
Main Supply				~ 380V(±10%) 50Hz			
Gross Power (Excluding climbing and travelling)				27.8Kw			

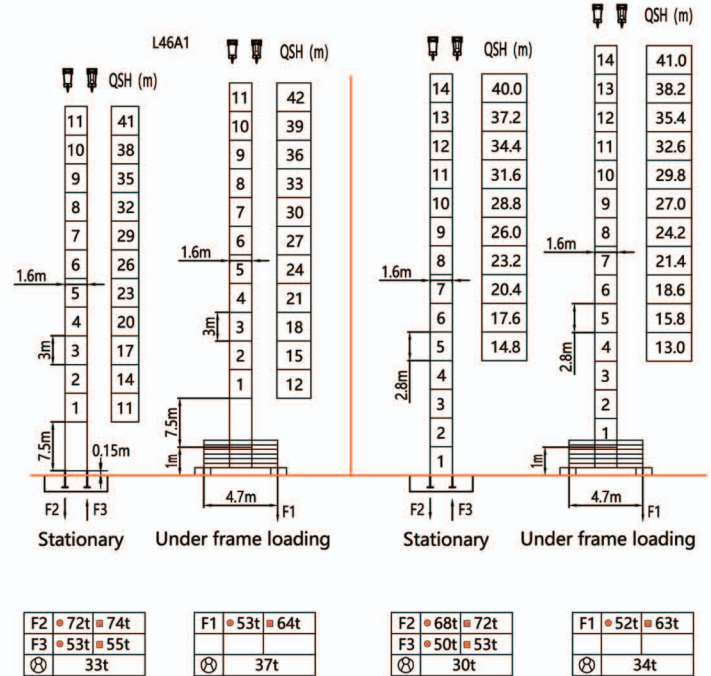
Counter-Weight

Jib Length	Balance Arm Length	Counter-Weight
50m	11.8m	8.88t
44m	11.8m	7.76t
38m	11.8m	6.64t
32m	11.8m	5.52t
26m	11.8m	4.40t

Dimensions



Tower



QSH: Height of The Hook • In Service ■ Out of Service
 ⊗ Weight with max free-standing height and max jib (without counter-weight and load)

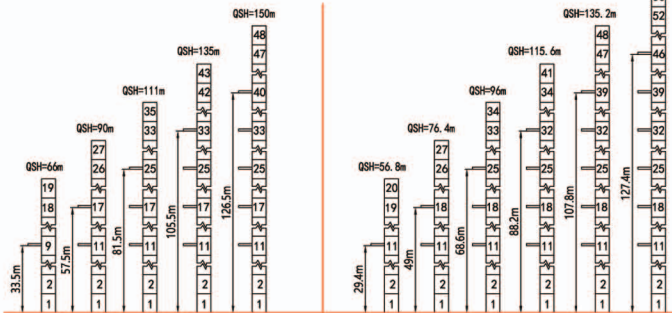
Load Diagrams

Jib m	rope	Max Load		Mxt														
		t	m	18	19	20	21	22	23	24	25	31	37	43	49	55		
55	☐	2.5	29.8	2.50										2.39	1.95	1.63	1.39	1.20
	☐	5.0	15.7	4.31	4.07	3.85	3.64	3.46	3.29	3.14	3.00	2.34	1.90	1.58	1.34	1.15		
49	☐	2.5	31.4	2.50										2.07	1.73	1.48		
	☐	5.0	16.5	4.56	4.30	4.07	3.86	3.66	3.49	3.33	3.18	2.41	2.02	1.68	1.43			
43	☐	2.5	32.1	2.50										2.12	1.78			
	☐	5.0	16.9	4.67	4.41	4.17	3.95	3.75	3.57	3.41	3.26	2.55	2.07	1.73				
37	☐	2.5	32.4	2.50										2.15				
	☐	5.0	17.1	4.73	4.46	4.22	4.00	3.80	3.62	3.45	3.30	2.58	2.10					
31	☐	2.5	32.1	2.50														
	☐	5.0	16.9	4.67	4.41	4.17	3.95	3.75	3.57	3.41	3.26	2.55						
25	☐	2.5	31.9	2.50														
	☐	5.0	16.2	4.46	4.20	3.97	3.76	3.58	3.40	3.25	3.10							

Anchorage

Tower crane standard section
L46A1

Tower crane standard section
1.6m*1.6m*2.8m



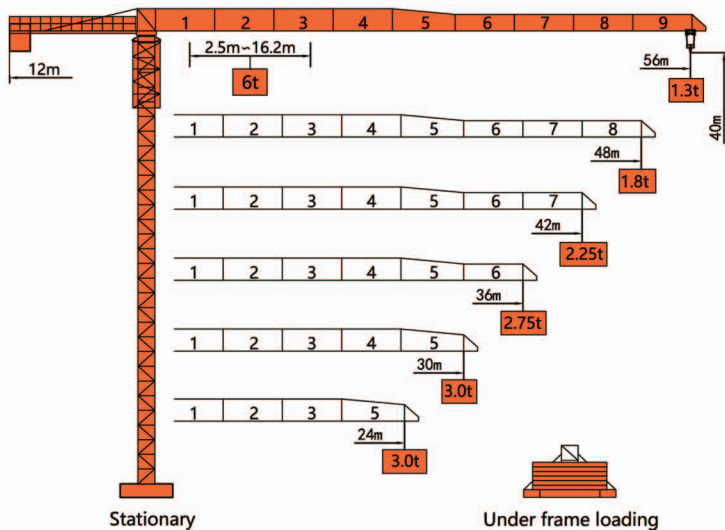
Mechanisms

Mechanisms	Example	Model	Speed (m/min)		Hoist Weight (t)	Rope Capacity	Power
			☐	☐			
Hoisting	▲ ▼	IQ5.70B	0-9	2.5	320m	18kw	
			0-35	2.5			
			0-70	1.25			
			0-4.5	5.0			
			0-17.5	5.0			
			0-35	2.5			
Trolleying	◀▶	BE2455X	0 ~ 40m/min			3.3kw	
Slewing	⦿	HR37	0 ~ 0.63r/min			2*3.7kw	
Main Supply					~ 380V(±10%) 50Hz		
Gross Power (Excluding climbing and travelling)					28.7Kw		

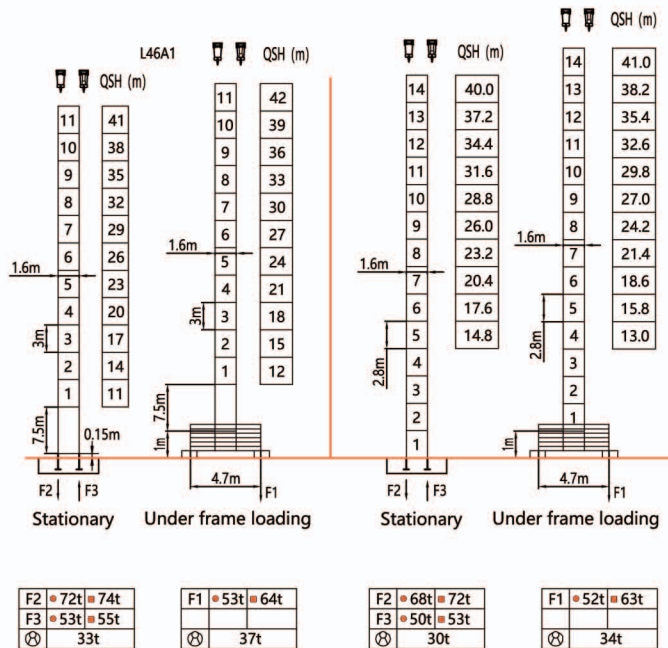
Counter-Weight

Jib Length	Balance Arm Length	Counter-Weight
55m	11.8m	10.4t
49m	11.8m	9.2t
43m	11.8m	8.0t
37m	11.8m	6.8t
31m	11.8m	5.6t
25m	11.8m	5.6t

Dimensions



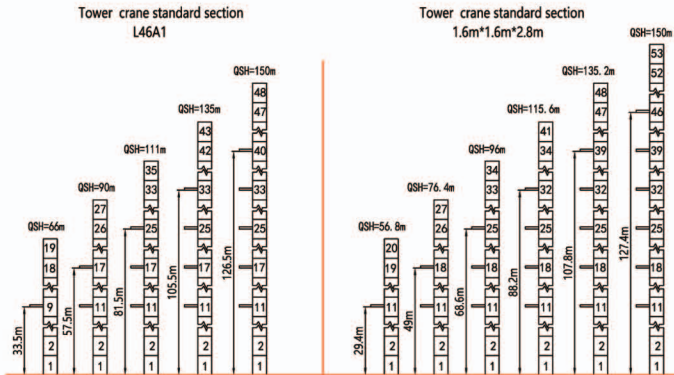
Tower



Load Diagrams

Jib m	rope	Max Load		Mxt															
		t	m	17	18	19	20	21	22	23	24	30	36	42	48	56			
56	☺	3.0	30.4	3.0															
	☹	6.0	16.7	5.90	5.52	5.19	4.89	4.62	4.38	4.15	3.95	3.00	2.37	1.92	1.58	1.24			
48	☺	3.0	32.5	3.0															
	☹	6.0	17.8	6.00	5.96	5.61	5.28	4.99	4.73	4.49	4.27	3.26	2.58	2.10	1.74				
42	☺	3.0	33.5	3.0															
	☹	6.0	18.4	6.00	6.00	5.80	5.47	5.17	4.90	4.65	4.42	3.38	2.69	2.19					
36	☺	3.0	33.5	3.0															
	☹	6.0	18.4	6.00	6.00	5.80	5.47	5.17	4.90	4.65	4.42	3.38	2.69						
30	☺	3.0	33.5	3.0															
	☹	6.0	18.4	6.00	6.00	5.80	5.47	5.17	4.90	4.65	4.42	3.38							
24	☺	3.0	33.5	3.0															
	☹	6.0	18.4	6.00	6.00	5.80	5.47	5.17	4.90	4.65	4.42								

Anchorage



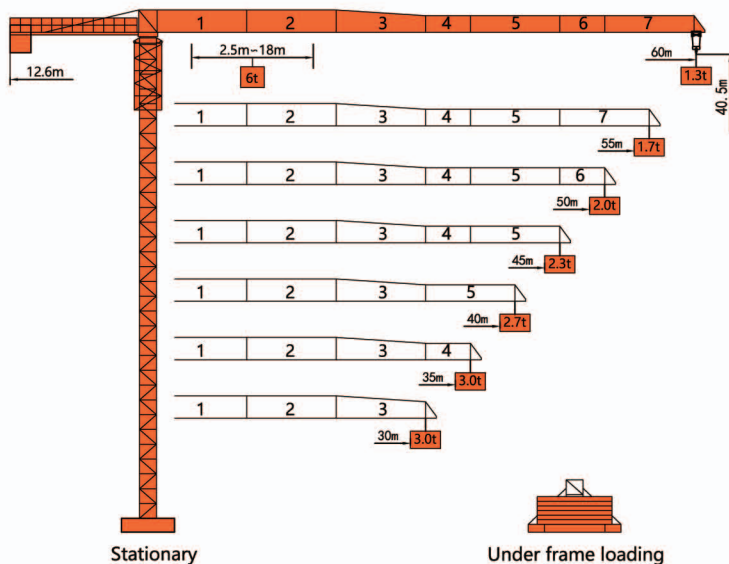
Mechanisms

Mechanisms	Example	Model	Speed (m/min)	Hoist Weight (t)	Rope Capacity	Power
Hoisting	☺ ☹	IQ6.80B	☺	0-100	410m	24kw
			☹	0-40		
			☺	0-50	3.0	
			☹	0-20	1.6	
Trolleying	☺ ☹	BE2455X	0 ~ 40m/min			3.3kw
Slewing	☺	HR37	0 ~ 0.63r/min			2*3.7kw
Main Supply				~ 380V(± 10%) 50Hz		
Gross Power (Excluding climbing and travelling)				34.7Kw		

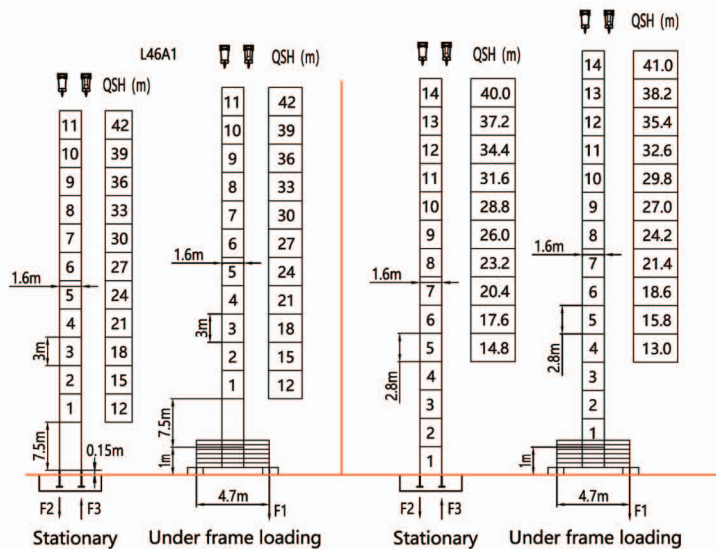
Counter-Weight

Jib Length	Balance Arm Length	Coynter-Weight
56m	12m	11.5t
48m	12m	10.3t
42m	12m	9.1t
36m	12m	7.9t
30m	12m	6.7t
24m	12m	6.7t

Dimensions



Tower



F2	94t	113t
F3	61t	87t
⊗	37t	

F1	62t	81t
⊗	42t	

F2	91t	99t
F3	58t	83t
⊗	34t	

F1	59t	78t
⊗	39t	

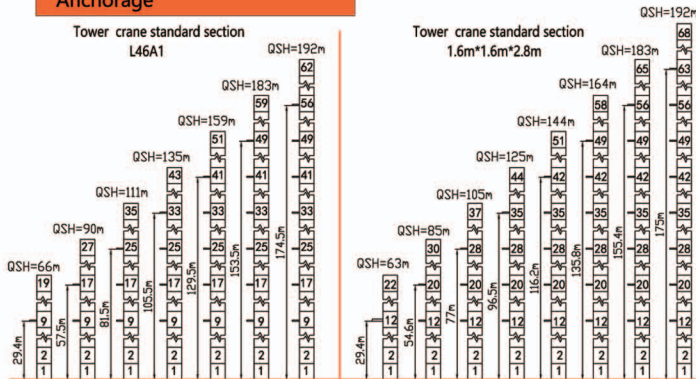
QSH: Height of The Hook ● In Service ■ Out of Service

⊗ Weight with max free-standing height and max jib (without counter-weight and load)

Load Diagrams

Jib		Max Load		Mxt													
m	rope	t	m	20	22	24	25	26	28	30	35	40	45	50	55	60	
60	☞	3.0	32.5	3.0								2.73	2.30	1.96	1.70	1.48	1.30
	☞☞	6.0	18.0	5.29	4.68	4.26	4.05	3.86	3.51	3.23	2.65	2.22	1.88	1.62	1.40	1.22	
55	☞	3.0	35.0	3.0								2.60	2.23	1.94	1.70		
	☞☞	6.0	19.7	5.91	5.29	4.77	4.54	4.34	3.96	3.64	3.00	2.52	2.15	1.86	1.62		
50	☞	3.0	35.0	3.0								2.68	2.30	2.00			
	☞☞	6.0	20.2	6.00	5.40	4.90	4.66	4.44	4.06	3.74	3.08	2.60	2.22	1.92			
45	☞	3.0	35.0	3.0								2.68	2.30				
	☞☞	6.0	20.2	6.00	5.40	4.90	4.66	4.44	4.06	3.74	3.08	2.60	2.22				
40	☞	3.0	35.0	3.0								2.70					
	☞☞	6.0	20.3	6.00	5.43	4.93	4.70	4.47	4.09	3.77	3.11	2.62					
35	☞	3.0	35.0	3.0													
	☞☞	6.0	20.4	6.00	5.44	4.94	4.71	4.48	4.10	3.78	3.10						
30	☞	3.0	35.0	3.0													
	☞☞	6.0	20.5	6.00	5.53	4.99	4.76	4.53	4.15	3.82							

Anchorage



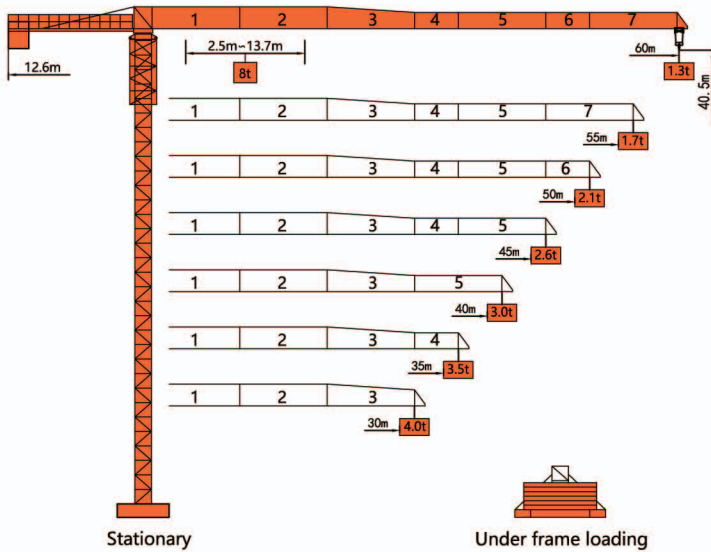
Mechanisms

Mechanisms	Example	Model	Speed (m/min)	Hoist Weight (t)	Rope Capacity	Power
Hoisting	☞ ☞☞	24IQ15	0-100	0.8	410m	24kw
			0-40	3.0		
			0-50	1.6		
			0-20	6.0		
Trolleying	◀▶	BE2455X	0~40m/min			4.0kw
Slewing	☉	HR37	0~0.63r/min			2*4.0kw
Main Supply				~ 380V(±10%) 50Hz		
Gross Power (Excluding climbing and travelling)				36Kw		

Counter-Weight

Jib Length	Balance Arm Length	Counter-Weight
60m	12.6m	17.8t
55m	12.6m	16.5t
50m	12.6m	15.8t
45m	12.6m	14.5t
40m	12.6m	13.2t
35m	12.6m	11.7t
30m	12.6m	10.2t

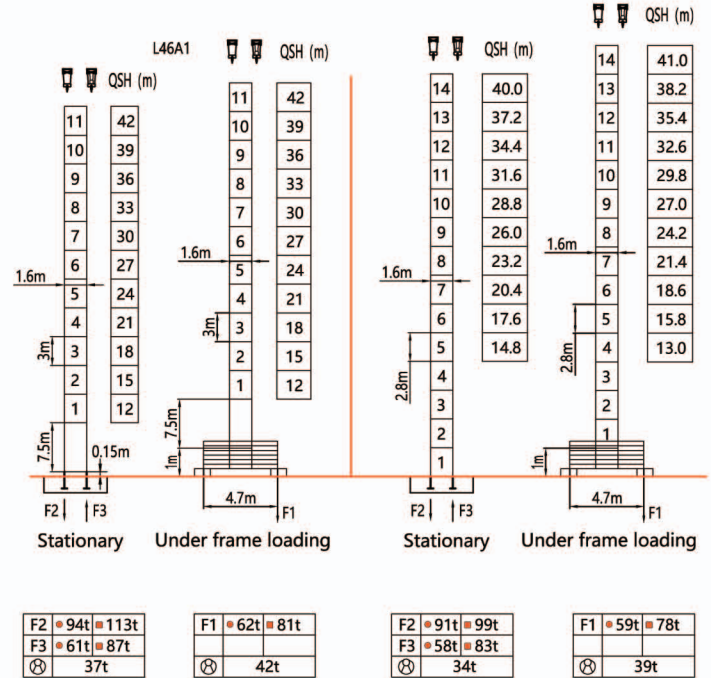
Dimensions



Stationary

Under frame loading

Tower

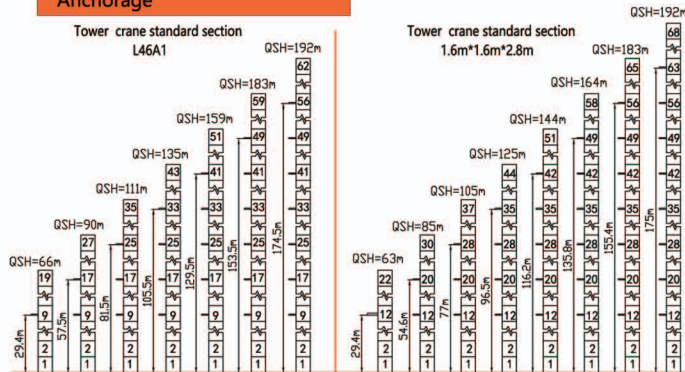


QSH: Height of The Hook ● In Service ■ Out of Service
 ⊗ Weight with max free-standing height and max jib (without counter-weight and load)

Load Diagrams

Jib m	rope	Max Load t	Mxt													
			m	16	20	22	24	26	28	30	35	40	45	50	55	60
60	☺	4.0	25.5	4.0				3.92	3.59	3.30	2.73	2.30	1.97	1.70	1.48	1.30
	☹	8.0	13.7	6.72	5.22	4.67	4.22	3.84	3.51	3.22	2.65	2.22	1.89	1.62	1.40	1.22
55	☺	4.0	28.1	4.0				3.70	3.07	2.60	2.23	1.94	1.70			
	☹	8.0	15.1	7.47	5.82	5.22	4.72	4.30	3.93	3.62	2.98	2.52	2.15	1.86	1.62	
50	☺	4.0	30.3	4.0				3.37	2.86	2.47	2.10					
	☹	8.0	16.2	8.00	6.34	5.70	5.16	4.70	4.31	3.97	3.29	2.78	2.39	2.02		
45	☺	4.0	31.6	4.0				3.54	3.00	2.60						
	☹	8.0	16.9	8.00	6.65	5.97	5.41	4.93	4.52	4.17	3.46	2.92	2.52			
40	☺	4.0	31.6	4.0				3.54	3.00	2.60						
	☹	8.0	16.9	8.00	6.65	5.97	5.41	4.93	4.52	4.17	3.46	2.92	2.52			
35	☺	4.0	31.6	4.0				3.54	3.00	2.60						
	☹	8.0	16.9	8.00	6.65	5.97	5.41	4.93	4.52	4.17	3.46	2.92	2.52			
30	☺	4.0	31.6	4.0				3.54	3.00	2.60						
	☹	8.0	16.9	8.00	6.65	5.97	5.41	4.93	4.52	4.17	3.46	2.92	2.52			

Anchorage



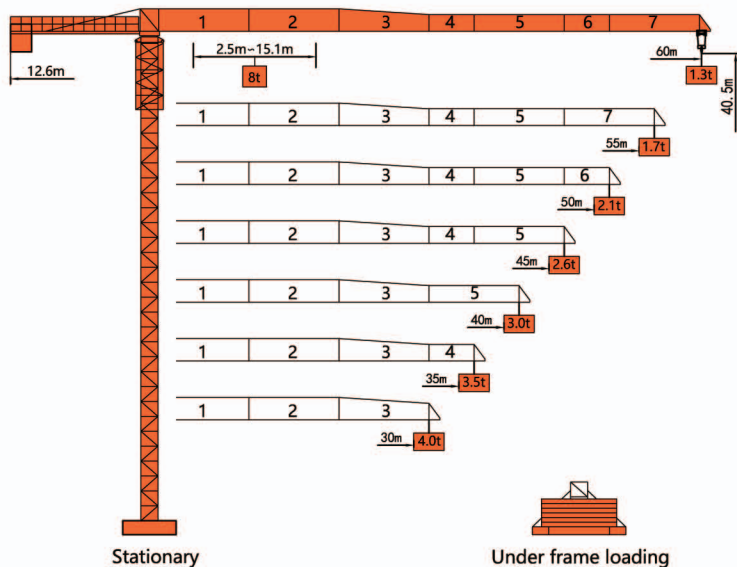
Mechanisms

Mechanisms	Example	Model	Speed (m/min)	Hoist Weight (t)	Rope Capacity	Power
Hoisting	☺ ☹	IQ8.80P	☺ 0-76	1.4	420m	30kw
			☹ 0-38	4.0		
			☺ 0-76	2.8		
			☹ 0-38	8.0		
Trolleying	☺ ☹	BE2455X	0~40m/min			4.0kw
Slewing	☺	HR37	0~0.63r/min			2*4.0kw
Main Supply				~380V(±10%) 50Hz		
Gross Power (Excluding climbing and travelling)				42Kw		

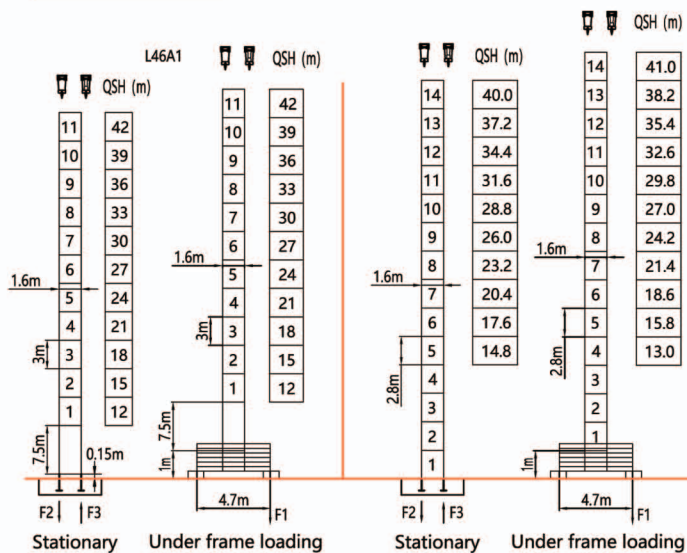
Counter-Weight

Jib Length	Balance Arm Length	Coounter-Weight
60m	12.6m	17.8t
55m	12.6m	16.5t
50m	12.6m	15.8t
45m	12.6m	14.5t
40m	12.6m	13.2t
35m	12.6m	11.7t
30m	12.6m	10.2t

Dimensions



Tower



F2	95t	113t
F3	63t	87t
⊗	38t	

F1	62t	81t
⊗	42t	

F2	92t	99t
F3	59t	84t
⊗	35t	

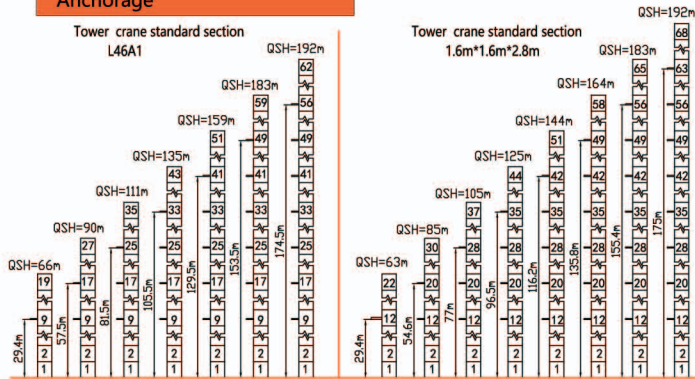
F1	59t	78t
⊗	39t	

QSH: Height of The Hook ● In Service ■ Out of Service
 ⊗ Weight with max free-standing height and max jib (without counter-weight and load)

Load Diagrams

Jib m	rope	Max Load		Mxt													
		t	m	18	20	22	24	26	28	30	35	40	45	50	55	60	
60	4.0	28.1	4.0						3.70	3.07	2.60	2.23	1.94	1.70	1.50		
	8.0	15.1	6.55	5.82	5.22	4.72	4.30	3.93	3.62	2.99	2.52	2.15	1.86	1.62	1.42		
55	4.0	30.4	4.0						3.39	2.88	2.48	2.16	1.90				
	8.0	16.3	7.16	6.37	5.72	5.18	4.72	4.33	3.99	3.31	2.80	2.40	2.08	1.82			
50	4.0	31.9	4.0						3.59	3.05	2.63	2.30					
	8.0	17.1	7.55	6.72	6.04	5.47	4.99	4.58	4.22	3.51	2.97	2.58	2.22				
45	4.0	32.6	4.0						3.67	3.12	2.70						
	8.0	17.4	7.72	6.87	6.17	5.60	5.10	4.68	4.32	3.58	3.04	2.62					
40	4.0	32.6	4.0						3.67	3.12							
	8.0	17.4	7.72	6.87	6.17	5.60	5.10	4.68	4.32	3.58	3.04						
35	4.0	32.6	4.0						3.67								
	8.0	17.4	7.72	6.87	6.17	5.60	5.10	4.68	4.32	3.58							
30	4.0	32.6	4.0														
	8.0	17.4	7.72	6.87	6.17	5.60	5.10	4.68	4.32								

Anchorage



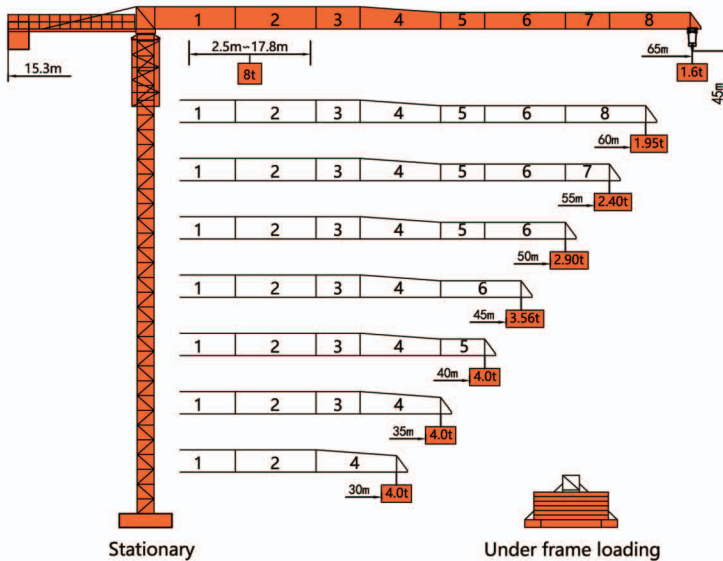
Mechanisms

Mechanisms	Example	Model	Speed (m/min)	Hoist Weight (t)	Rope Capacity	Power
Hoisting	▲ ▼	IQ8.80P	0-76	1.4	420m	30kw
			0-38	4.0		
			0-76	2.8		
			0-38	8.0		
Trolleying	◀▶	BE2455X	0 ~ 40m/min			4.0kw
Slewing	⊙	HR37	0 ~ 0.63r/min			2*4.0kw
Main Supply				~ 380V(±10%) 50Hz		
Gross Power (Excluding climbing and travelling)				42Kw		

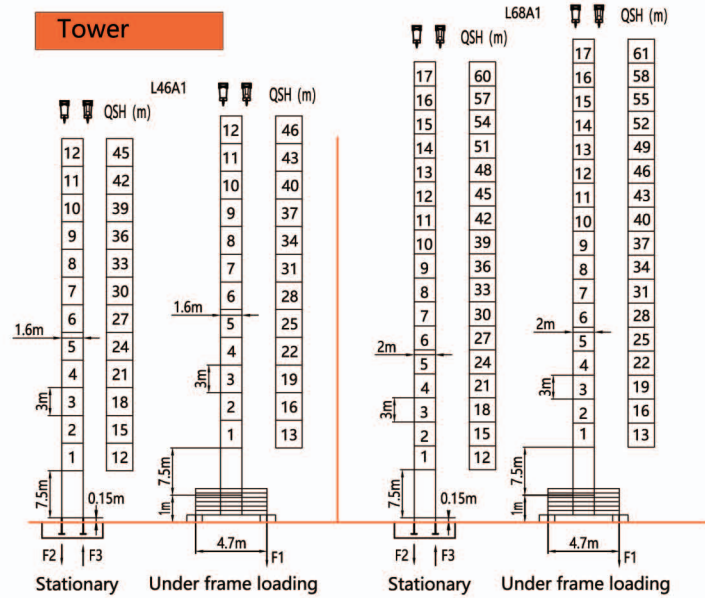
Counter-Weight

Jib Length	Balance Arm Length	Counter-Weight
60m	12.6m	17.8t
55m	12.6m	16.5t
50m	12.6m	15.8t
45m	12.6m	14.5t
40m	12.6m	13.2t
35m	12.6m	11.7t
30m	12.6m	10.2t

Dimensions



Tower



F2	102t	121t
F3	70t	96t
⊗	46t	

F1	72t	92t
⊗	50t	

F2	120t	194t
F3	71t	160t
⊗	59t	

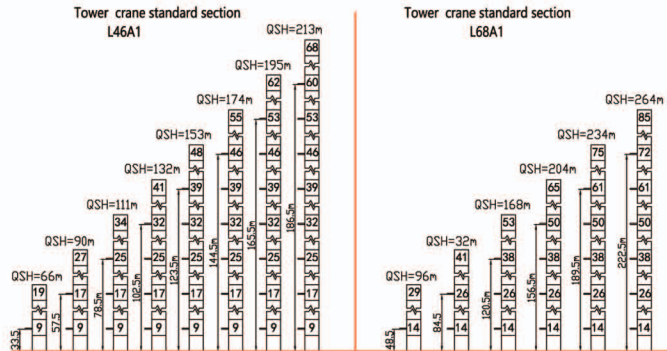
F1	81t	115t
⊗	63t	

QSH: Height of The Hook ● In Service ■ Out of Service
 ⊗ Weight with max free-standing height and max jib (without counter-weight and load)

Load Diagrams

Jib m	rope	Max Load		Mxt																			
		t	m	20	22	24	26	28	30	35	40	45	50	55	60	65							
65	☺	4.0	32.7				4.0										3.68	3.11	2.67	2.31	2.02	1.78	1.60
	☹	8.0	17.8	7.03	6.30	5.70	5.18	4.74	4.37								3.61	3.04	2.60	2.24	1.95	1.71	1.53
60	☺	4.0	34.8				4.0										3.97	3.36	2.89	2.51	2.20	1.95	
	☹	8.0	18.9	7.53	6.80	6.15	5.61	5.10	4.70								3.90	3.29	2.82	2.44	2.13	1.88	
55	☺	4.0	36.8				4.0										3.61	3.11	2.71	2.39			
	☹	8.0	20.0	8.00	7.21	6.53	5.96	5.38	5.04	4.19							3.54	3.04	2.64	2.32			
50	☺	4.0	38.9				4.0										3.86	3.33	2.91				
	☹	8.0	21.1	8.00	7.67	6.95	6.34	5.82	5.37	4.47							3.79	3.26	2.84				
45	☺	4.0	40.9				4.0												3.56				
	☹	8.0	22.2	8.00	8.00	7.36	6.72	6.20	5.70	4.75	4.04								3.49				
40	☺	4.0	40.9				4.0																
	☹	8.0	22.2	8.00	8.00	7.36	6.72	6.20	5.70	4.75	4.04												
35	☺	4.0	40.9				4.0																
	☹	8.0	22.2	8.00	8.00	7.36	6.72	6.20	5.70	4.75													
30	☺	4.0	40.9				4.0																
	☹	8.0	22.2	8.00	8.00	7.36	6.72	6.20	5.70														

Anchorage



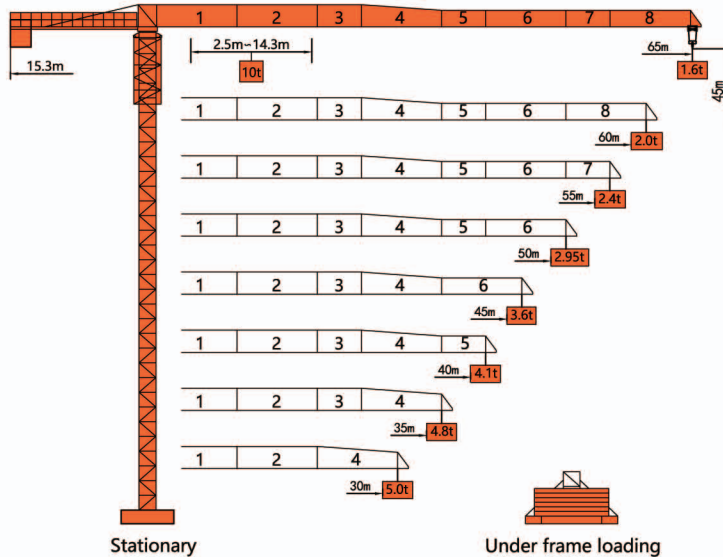
Mechanisms

Mechanisms	Example	Model	Speed (m/min)	Hoist Weight (t)	Rope Capacity	Power	
Hoisting	☺ ☹	IQ8.80P	☺	0-76	1.4	420m	30kw
			☹	0-38	4.0		
			☺	0-76	2.8		
			☹	0-38	8.0		
Trolleying	☺	BE2455X	0 ~ 58m/min			4.0kw	
Slewing	☺	HR37	0 ~ 0.82r/min			2*5.5kw	
Main Supply				~ 380V(±10%) 50Hz			
Gross Power (Excluding climbing and travelling)				45Kw			

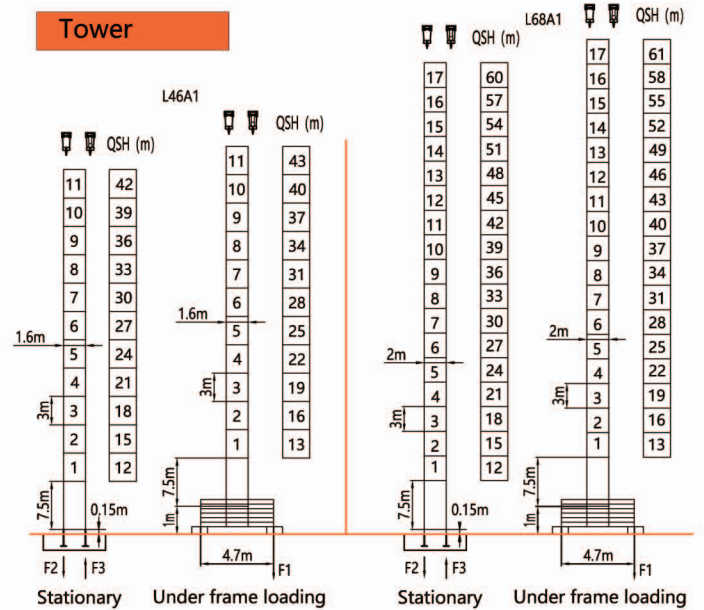
Counter-Weight

Jib Length	Balance Arm Length	Counter-Weight
65m	15.3m	18.8t
60m	15.3m	17.5t
55m	15.3m	16.3t
50m	15.3m	15.0t
45m	15.3m	13.8t
40m	15.3m	12.5t
35m	15.3m	10.0t
30m	15.3m	10.0t

Dimensions



Tower



F2	103t	123t
F3	72t	97t
⊗	47t	

F1	74t	95t
⊗	51t	

F2	122t	195t
F3	73t	162t
⊗	60t	

F1	82t	117t
⊗	64t	

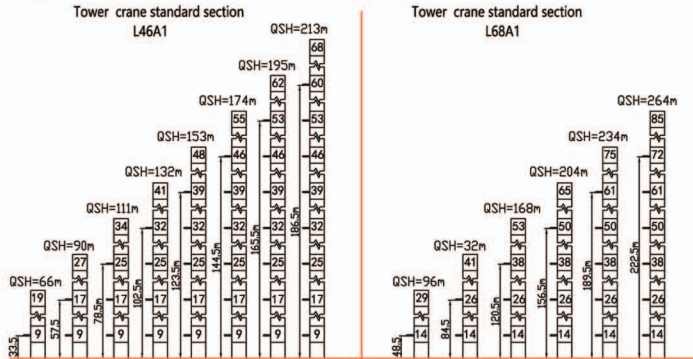
QSH: Height of The Hook ● In Service ■ Out of Service

⊗ Weight with max free-standing height and max jib (without counter-weight and load)

Load Diagrams

Jib m	rope t	m	Mxt												
			20	22	24	26	28	30	35	40	45	50	55	60	65
65	5.0	26.9	5.0			4.77	4.40	3.66	3.10	2.67	2.32	2.04	1.80	1.60	
	10.0	14.3	6.92	6.21	5.62	5.12	4.69	4.32	3.58	3.02	2.59	2.24	1.96	1.72	
60	5.0	28.4	5.0			4.75	3.96	3.38	2.92	2.55	2.25	2.00			
	10.0	15.2	7.42	6.67	6.05	5.52	5.07	4.67	3.88	3.30	2.84	2.47	2.17	1.92	
55	5.0	30.3	5.0			4.23	3.60	3.11	2.72	2.40					
	10.0	16.2	7.92	7.12	6.45	5.89	5.41	4.99	4.15	3.52	3.03	2.64	2.32		
50	5.0	32.3	5.0			4.56	3.89	3.36	2.95						
	10.0	17.2	8.50	7.64	6.93	6.33	5.82	5.37	4.48	3.81	3.28	2.87			
45	5.0	34.1	5.0			4.85	4.15	3.60							
	10.0	18.2	9.02	8.12	7.37	6.73	6.20	5.72	4.77	4.07	3.52				
40	5.0	33.8	5.0			4.80	4.10								
	10.0	18.0	8.92	8.03	7.29	6.66	6.12	5.65	4.72	4.02					
35	5.0	33.8	5.0			4.80									
	10.0	18.0	8.92	8.03	7.29	6.66	6.12	5.65	4.72						
30	5.0	33.8	5.0			4.72									
	10.0	18.0	8.92	8.03	7.29	6.66	6.12	5.65	4.72						

Anchorage



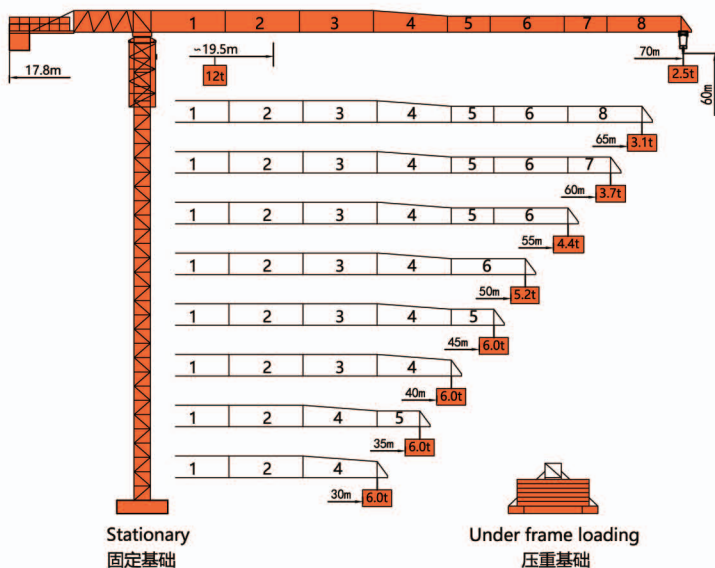
Mechanisms

Mechanisms	Example	Model	Speed (m/min)	Hoist Weight (t)	Rope Capacity	Power
Hoisting	▲ ● ▼	IQ8.80P	0-76	1.4	420m	37kw
			0-38	4.0		
			0-76	2.8		
			0-38	8.0		
Trolleying	◀▶	BE2455X	0 ~ 58m/min			5.5kw
Slewing	⊙	HR37	0 ~ 0.82r/min			2*5.5kw
Main Supply				~ 380V(±10%) 50Hz		
Gross Power (Excluding climbing and travelling)				46.5Kw		

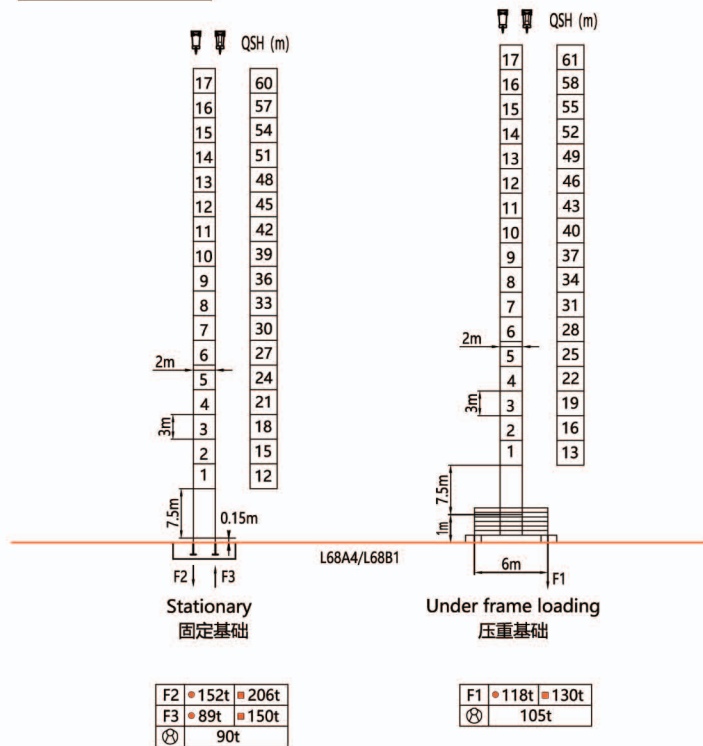
Counter-Weight

Jib Length	Balance Arm Length	Counter-Weight
65m	15.3m	18.8t
60m	15.3m	17.5t
55m	15.3m	16.3t
50m	15.3m	15.0t
45m	15.3m	13.8t
40m	15.3m	12.5t
35m	15.3m	10.0t
30m	15.3m	10.0t

外形尺寸 Dimensions



塔身 Tower



QSH: Height of The Hook ● In Service (工作状态) ■ Out of Service (非工作状态)

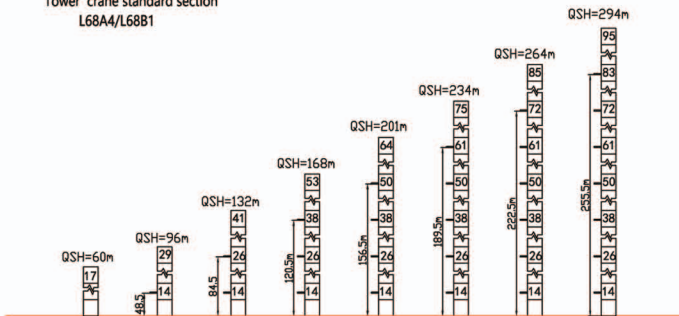
⊗ Weight with max free-standing height and max jib (without counter-weight and load) (不含载重及平衡重, 最大臂长及标准高度时的自重)

载荷特性 Load Diagrams

Jib m	Max Load		Mxt													
	rope	t	15	18	20	25	30	35	40	45	50	55	60	65	70	
70	☞	6.0 35.8	6.0						5.24	4.52	3.95	3.49	3.10	2.78	2.50	
	☞☞	12.0 19.7	12.0	12.0	11.70	9.07	7.30	6.05	5.13	4.41	3.84	3.38	2.99	2.67	2.39	
65	☞	6.0 38.7	6.0						5.77	4.99	4.37	3.87	3.45	3.10		
	☞☞	12.0 21.3	12.0	12.0	12.0	9.93	8.01	6.66	5.66	4.88	4.26	3.76	3.34	2.99		
60	☞	6.0 40.8	6.0						5.32	4.67	4.14	3.70				
	☞☞	12.0 22.4	12.0	12.0	12.0	10.5	8.52	7.09	6.03	5.21	4.56	4.03	3.59			
55	☞	6.0 42.8	6.0						5.64	4.96	4.40					
	☞☞	12.0 23.4	12.0	12.0	12.0	11.1	9.00	7.50	6.39	5.53	4.85	4.29				
50	☞	6.0 44.5	6.0						5.91	5.20						
	☞☞	12.0 24.3	12.0	12.0	12.0	11.6	9.41	7.85	6.69	5.80	5.09					
45	☞	6.0 45.0	6.0													
	☞☞	12.0 25.0	12.0	12.0	12.0	12.0	9.70	8.10	6.91	5.99						
40	☞	6.0 40.0	6.0													
	☞☞	12.0 24.6	12.0	12.0	12.0	11.8	9.54	7.96	6.79							
35	☞	6.0 35.0	6.0													
	☞☞	12.0 24.2	12.0	12.0	12.0	11.5	9.34	7.79								
30	☞	6.0 30.0	6.0													
	☞☞	12.0 23.6	12.0	12.0	12.0	11.2	9.09									

附着示意图 Anchorage

Tower crane standard section
L68A4/L68B1

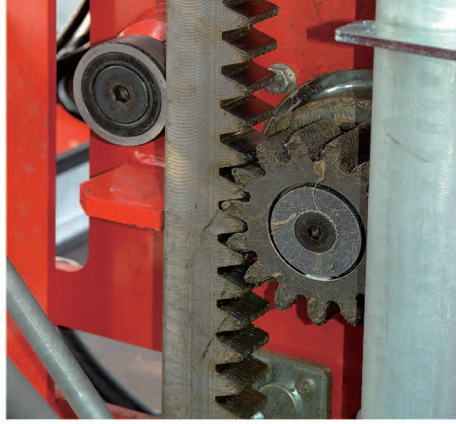


机构特性 Mechanisms

Mechanisms	Example	Model	Speed (m/min)	Hoist Weight (t)	Rope Capacity	Power	
			☞	0-100			2.0
Hoisting	☛	55JTVF30	☞	0-50	6.0	600m	55kw
			☞☞	0-50	4.0		
			☞☞☞	0-25	12.0		
			☞☞☞☞				
Trolleying	☛☛	BE2455X	0 ~ 58m/min			7.5kw	
Slewing	☛	HR37	0 ~ 0.82r/min			2*5.5kw	
Main Supply					~ 380V(±10%) 50Hz		
Gross Power (Excluding climbing and travelling)					73.5Kw		

平衡重 Counter-Weight

Jib Length 臂长	Balance Arm Length 平衡臂长	Counter-Weight 平衡重
70m	17.8m	23.5t
65m	17.8m	22.3t
60m	17.8m	21.8t
55m	17.8m	21.8t
50m	17.8m	20.5t
45m	17.8m	19.3t
40m	17.8m	17.5t
35m	17.8m	14.5t
30m	17.8m	13.3t



产品技术参数表(Technical Data)

类型 Sort	型号 Type	标准节 Section	最大轿厢高度 Max.height (m)	载重 Load (kg)	速度 Max. speed (m/min)	驱动数 Drive num.	功率 Power (kw)	安全器 safety device	变频器 VFD (kw)	额定电流 Power fuses (A)	吊笼重量 Cage weight (kg)	轿厢重量 Max weight(kg)	使用系数 Rate				
											4.5	4.6	4.8	4.10	0.83		
工频 NO	SC50	200*650	150	500	33	1	11	SAJ30-1.2	/	32	1300	85	100	120	135	0.98	
	SC100	650*650	150	1000	33	2	11	SAJ30-1.2	/	63	1800	100	115	135	150	0.92	
	SC100	650*650	150	1500	33	2	13	SAH0-1.2	/	86	1800	100	115	135	150	0.91	
	SC200	650*650	150	2000	33	3	11	SAH0-1.2	/	86	2000	100	115	135	150	0.83	
				400		33	1	11	SAJ30-1.2	15	32	1300	85	100	120	135	0.80
				400	500	40	1	13	SAJ30-1.2	15	40	1300	85	100	120	135	0.82
变频 VFD			400		63	2	11	SAJ30-1.6	30	63	1500	85	100	120	135	0.76	
			400		33	2	11	SAJ30-1.2	30	63	1800	100	115	135	150	0.75	
			400		38	2	11	SAJ30-1.2	30	63	1800	100	115	135	150	0.86	
			400	1000	46	2	13	SAJ30-1.2	30	86	1800	100	115	135	150	0.90	
			400		63	3	13	SAH0-1.6	45	96	2000	100	115	135	150	0.80	
			400		96	3	18.5	SAH0-2.0	55	133	2200	100	115	135	150	0.86	
SC200			400		33	2	13	SAH0-1.2	30	86	1800	100	115	135	150	0.86	
			400		38	3	11	SAH0-1.2	37	86	2000	100	115	135	150	0.78	
			400	2000	40	3	11	SAH0-1.2	37	86	2000	100	115	135	150	0.82	
			400		46	3	13	SAH0-1.2	45	96	2000	100	115	135	150	0.80	
			400		63	3	18.5	SAH0-1.6	55	150	2200	100	115	135	150	0.77	
			400		96	3	26	SAJ50-2.0	90	200	2200	100	115	135	150	0.83	

备注: 1. 额定载重, 提升速度, 吊笼尺寸等参数可按客户要求订制;

The data of load, lift speed and cage size are available and also can be customized based on request;

2. 单笼围栏总重950kg, 双笼围栏总重1450kg;

The enclosure weight of single cage is 950kg, and twin cage is 1450kg;

3. 钢丝绳每根25kg, 轿厢每套200kg;

Each rack weights 25kg, each wall tie weights 200kg;